



dobsonei

103 GILMORE CRES, GARRAN, ACT

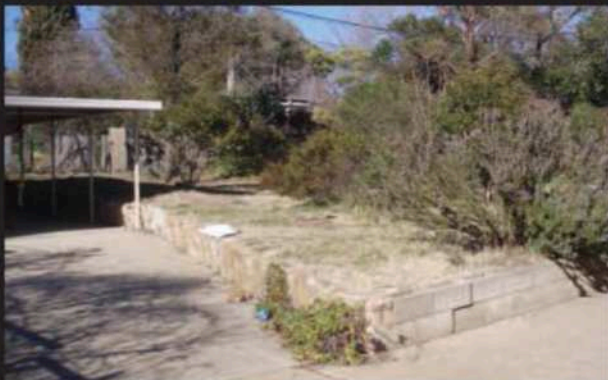
DUAL OCCUPANCY DEVELOPMENT

OVERVIEW

before



after



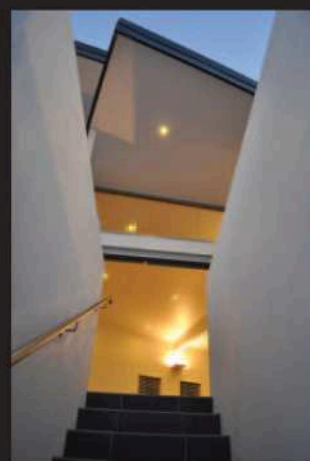
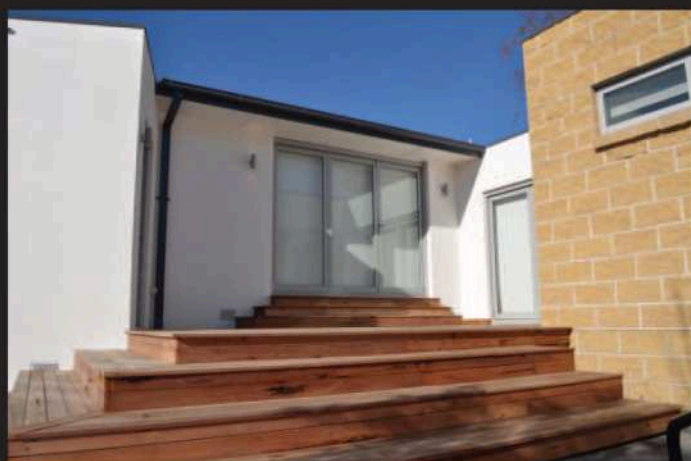
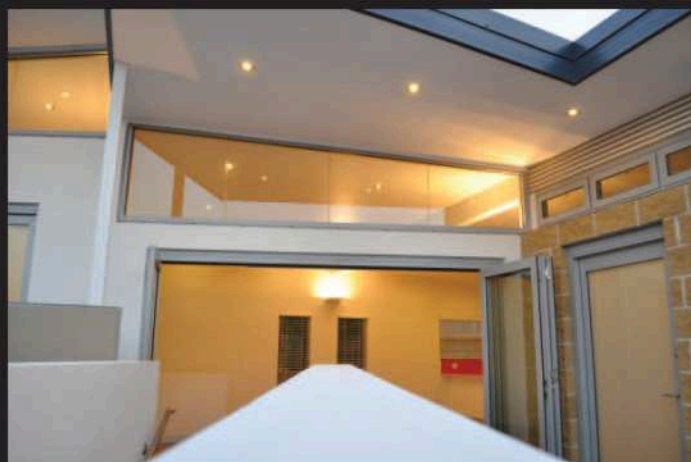
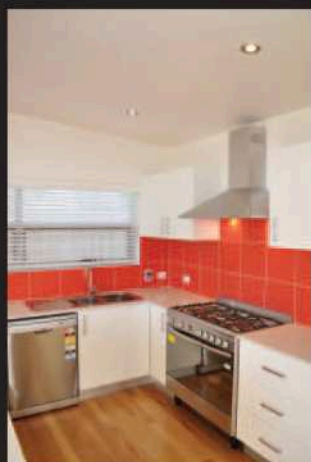
www.dobsonei.com
mark.dobson@dobsonei.com
0408 410 628



dobsonei

103 GILMORE CRES, GARRAN, ACT DUAL OCCUPANCY DEVELOPMENT

THE BIG PICTURE



www.dobsonei.com
mark.dobson@dobsonei.com



dobson
ei

103 GILMORE CRES, GARRAN, ACT

DUAL OCCUPANCY DEVELOPMENT

DETAILS

