

Durable & Hardwearing protection with innovative Polyurethane

Spray on Lining
Takes up contours & shapes
Watertight & Seamless
Joint Free & easy to keep clean
Protects from Rust and Corrosion
Enhances Appearance
Reduces Maintenance
Increase Service Life of Capital Goods
High Elasticity = Elongation at Break
Excellent Tensile Strength at Break
Textured, non-skid & flexible surface
Resists scratches, gouges & abrasion
Permanently attaches—cannot be stolen
Does not perish, crack, split or warp
Thickness from 1 mm to 10mm
Virtually no loss of space
Resistant to many abrasive chemicals
Withstands harsh weather conditions
Insulates from noise & road vibration

Absolute Perfect Protection

Ideal for
Waterproofing, Soundproofing
and Surface Protection

- Ute trays, trailers & 4WD's
- Commercial vans & trucks
- Speaker enclosures & boxes
- Vehicle interior & under bonnets
- Horse trailers & cattle trucks
- Water tanks, ponds & features
- Sandblasting Cabinets
- Marine & Boating
- Decks and Flooring
- Workshop & Benches
- Ship & Storage containers
- Mining - Plant & Equipment
- Pumps and pipes
- Roofing & Gutters
- The uses are endless.....



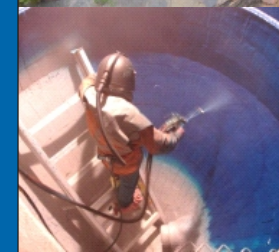
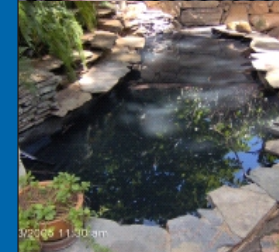
Your local dealer is:

POLYGUARD HEAD OFFICE & LOGAN CITY
P.O. Box 1228, Springwood, Q4127, Australia
7 / 27 Allgas Street, Slacks Creek, Q4127
P (07) 3299 2887 F (07) 3011 1022
M 0403 839 255 www.polyguard.com.au

The photos depicted in this brochure are shown for guideline purposes and are not intended to represent the entirety of techniques or method by authorised applicators. Dealerships are independently owned and o



Protective and Waterproof Coatings
Automotive, Marine, Industrial, Containers, Tanks, Flooring, Ponds



- Sprayed on
- Quick Dry
- Durable
- Hardwearing
- Non-Skid Surface
- Prevent Corrosion
- Looks Great
- Adds Value



Absolute Perfect Protection

For your local dealer please see overleaf
Or Call 1300 139 567
www.polyguard.com.au

What is Polyurethane Linings ?

Polyurethane is essentially one of the most durable and tough products ever invented. When mixed and sprayed, the two components, (Iso and Resin) react chemically to form an elastomer which vigorously adheres to most surfaces.

With elastic capabilities of between 400 and 900 percent the end result is a pliable, strong and seamless protective coating which is impervious to water, and extremely resistant to abrasion, cutting and gouging. (Perfect for high traffic or hardwearing surfaces.)



Marine Deck - protective coating for high traffic area

It is UV stable and tolerant to a wide range of temperatures and climatic conditions. It is also resistant to many corrosion-causing chemicals; oils, fuels, acids and solvents.

Polyurethane Linings can be sprayed from one millimetre to several centimetres thick in just one operation and is cured to full strength within 24 hours. Although not a paint, a variety of colours are available.



Water feature - ready to fill within the hour

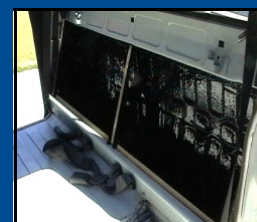
The flexibility allows the coating to take on the shape of the surface to which it is applied.

Sealing and contouring unusual shapes is not a problem and its strength makes it ideal for bonding different types of surfaces together (no glue needed).

With sound dampening qualities the benefits of Polyurethane linings extends to eliminating unwanted resonance and noise caused by rattles & vibration from rough terrain to engine compartments and is even perfect for the car audio enthusiast.



Preparation for application of Polyurethane lining in a Motor Vehicle Speaker enclosure.



Completed Lining— Seamless, unbreakable, water & airtight enclosure.



Traditional Rubber Linings In Ute Trays

- Perish and give off black residue
- Have joints causing water seepage
- Water collects between lining & tray
- Can not be repaired easily
- Shift in the tray
- Require maintenance and replacement
- Does not protect against rust or corrosion

Polyguard can be applied to various surfaces, locking out atmospheric conditions between the Polyurethane Lining & the surface—eg:

• Wood	• Cardboard
• Fibre Glass	• Glass
• Steel	• Foam
• Aluminium	• Polystyrene
• Stainless Steel	• Concrete
• Galvanized Plate	• Gyprock

Absolute Perfect Protection

Get it On ...