

Cromer & Partners

Tasmanian registered consulting surveyors and independent property advisors

RURAL INTERESTS:

Does your rural parcel include areas that are superfluous to your needs or provide little return?

Most rural holdings consist of a number of original grants even if they are held in the one title. It is often possible to amend the common boundaries between these grants to create allotments that are redundant to your needs and can generate a return. Contact this office for advice concerning these matters.

URBAN INTERESTS:

Have you or are you considering buying or developing urban property?

This office has extensive experience in property matters and can provide you with all the information and contacts you need to make your real estate experience as enjoyable as possible.



Cromer & Partners

Tasmanian registered consulting surveyors and independent property advisors

Cromer & Partners ABN 849 25247 067

REGISTERED CONSULTING SURVEYORS AND PROPERTY ADVISORS

The principals of Cromer & Partners are **Terry Cromer** (Member of the Institute of Surveyors) and **Maria-Christina Lottenbach**.

Terry Cromer L.S. M.I.S.

0419 353 414

terry@cromer-partners.com.au

Maria-Christina Lottenbach T.H.B.

0407 602 589

mariachristina@cromer-partners.com.au

P.O. Box 368 Sandy Bay 7006 Tasmania Australia

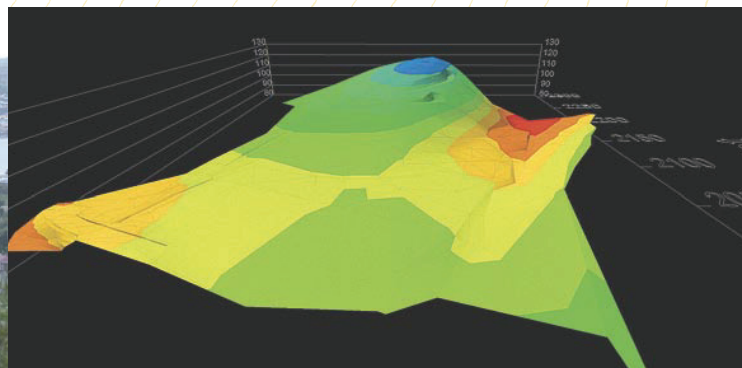
Phone: +61 3 6225 5366
0419 353 414 / 0407 602 589

Facsimile: +61 3 6225 5388

24 hour contact at:
ccromera@bigpond.net.au

If required Maria-Christina can assist in the following languages:

French German Spanish
Italian Catalan



Cromer & Partners

Tasmanian registered consulting surveyors and independent property advisors



We are your Tasmanian specialists.

Cromer & Partners, Property Advisors and Consulting Surveyors act in your best interest to accomplish whatever land related matter you are attempting to achieve servicing local, mainland and overseas clients. We can solve your urban or rural property issues. We are your agents.

We are independent and manage your vision from concept to completion. We cover simple issues such as land/house sales through to complex developments by liaising with all relevant parties.

We act to fulfil your selected needs.

If time, expertise or location are limiting factors we can save you the worry of chasing Councils, finance, geologists, engineers, town planners and the like.

Tasmanian registered consulting surveyors and independent property advisors

We are experienced consultants

with extensive local knowledge and a select network of associated professionals.

We can organise and generate all the "typical" reports associated with your land transaction, such as:

Geo-technical reports	Effluent disposal advice
Soil tests	Building inspections
Engineering certificates	Quantity surveys
Title purchasing facility	
Property reports	

We have close associations with consultants practicing in the following fields and act as your agent for dealings in your selected field:

Accountants	Financial Advisors
Agricultural Scientists	Financial Brokers
Architects	Geologists
Botanists	Interior Designers
Builders	Landscape Architects
Building Consultants	Quantity Surveyors
Civil Contractors	Depreciation Surveyors
Draftpersons	Solicitors
Engineers	Surveyors
Fencing Contractors	3D CAD Modellers

Cromer & Partners can provide:

Check Surveys and Setouts	Boundary Remark Surveys
Subdivision Design	Title and Survey Searches
Planning Applications	Project Planning and Management
Re-zoning of Land	
Strata Subdivision	
Engineering Surveys	
Detail and Level Surveys	

Strata, Urban and Rural Surveys
Independent Pre and Post Purchase
Property Reports
Geocomp Systems with Terramodel Software
Data Delivery in various formats
30 Years Experience

Tasmanian registered consulting surveyors and independent property advisors



Tasmania is Australia's southernmost state. It boasts magnificent natural beauty, world famous wilderness, pristine beaches and coastline (did you know that Wineglass Bay was voted one of the top 10 beaches worldwide?) and also beautiful towns. Tasmania's food and wine are legendary and the friendly pace of life makes it an irresistible place to live.

Tasmania's coastline is more extensive than other Australian states with only a fraction of the population. Tasmanian crayfish, abalone, oysters, salmon are just some of the delights awaiting you. Tasmania's Central Highlands lakes are an angler's paradise with world-renowned fishing.

Tasmania also has some of the best value Real Estate available in the world and many have tried to keep this a well-guarded secret for obvious reasons. Cromer & Partners have been in the property business for over 35 years and our extensive local knowledge is offered to you to facilitate any property related goals you wish to achieve.

Buying, selling or developing property in Tasmania has its own unique pitfalls for the unwary and we pride ourselves in helping you navigate throughout any property related matter.

View our website; it will answer most of your immediate queries.



Tasmanian registered consulting surveyors and independent property advisors

Are you unsure how to proceed with land related matters?

Are you considering developing your land?

Are you buying or selling property?

Should you stratum?

What does your easement entitle you to?

Do you need a contour, detail, repeg or identification survey?

What do you need to do for a development application?

What is "fee simple"?

What are the different Rights of Way?

What are the requirements for a permit to subdivide?

What does your zoning mean?

What do the words on your title mean?

You will find answers on our webpage:
www.cromer-partners.com.au

We are happy to handle all your enquiries; local, interstate or overseas and site unseen.

We have created a "boutique" practice, providing excellence. We are also your independent, on-site critical eyes with property matters.

We act as your "one-stop" property facilitators.

A user-friendly web page provides a single site for these services.

An extensive glossary of property related terms is available together with an explanation of our expertise.

