

Your Exterra Authorised Operator is:

\*Trademark of Ensystem Inc. USA.

### Exterra Benefits

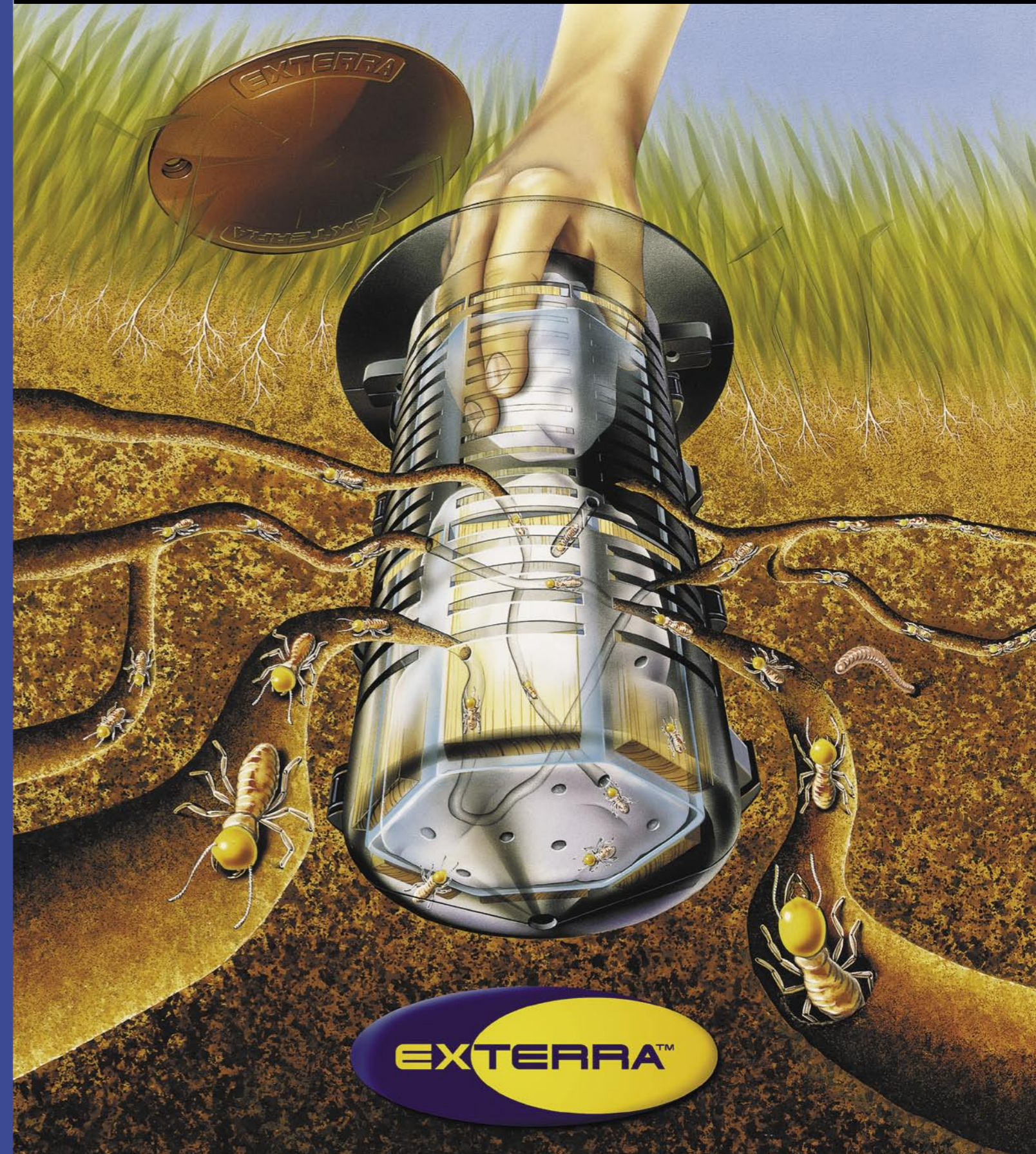
- ✓ Unique Termite Interception Zone protects your home.
- ✓ Focus Termite Attractant draws termites into the Exterra Station.
- ✓ Larger Station intercepts termites better.
- ✓ Preferred eucalypt timbers ensure termites enter Stations.
- ✓ Quality Controlled System and Operators with barcoded Stations.
- ✓ Safe for you, your pets and the environment.
- ✓ Eliminates the Termite Colony.

### Proud Sponsors of



Exterra was chosen by the Great Barrier Reef Marine Park Authority to protect the ReefHQ Aquarium; the Education Centre for the Great Barrier Reef.

# THE TERMITE TERMINAL



The end of the line for Termites

**EXTERRA**



# YOU'VE GOT TERMITES and you want them gone. Here's how Exterra does it.



## 1. Exterra gets to work in the ground...

The first step of using Exterra is to install In-ground Stations around the building at points near where termites are likely to be foraging in the ground for food. The Stations contain non-toxic food made of a timber termites prefer to eat.



**Or in concrete...** And if the building is surrounded by concrete, then the special Exterra In-concrete Station may be used. This has a stainless steel cap that seals flush with the pathway.



## 2. ...and inside your home quickly.

Above-ground Stations are the preferred approach when termites are already in your home. Bait is placed in the safe and sealed Station when it is installed. Above-ground Stations speed up the process of colony elimination. After the termite colony is eliminated, the Above-ground Stations are removed.



## 3. Termites have been intercepted...

Termites are easily detected in the Exterra Stations. The unique (patented) design of the Exterra Station allows for termites to be seen without disturbing them. This is very

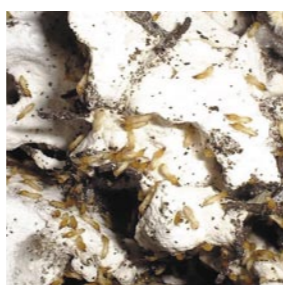
important. And the termites are not disturbed during bait application either.



## 4. ...so it's time to put Requiem to work.

Requiem Bait is added without disturbing the termites. This is vital to achieve quick and consistent results. Requiem is highly palatable to termites and they readily consume it in

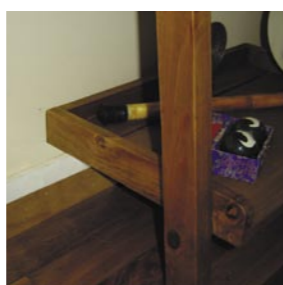
preference to timber. In fact local studies show that once termites start feeding on Requiem they stop feeding on the timbers in your home! Requiem is also non-toxic to you and your pets.



## 5. Termites can't resist Requiem which leads to the colony's quick demise.

The termites feed on the Requiem and take it back to the colony where it is fed slowly throughout the entire

colony. Since the termites die gradually, they do not associate the colony's demise with the consumption of Requiem. This ensures that the entire colony is eliminated.



## 6. The colony is eliminated.

Any remaining Requiem is removed. Fresh timbers are placed in the In-ground Stations, the Above-ground Stations are removed and 'Peace of Mind' monitoring

continues. This is because your property remains susceptible to future attack from new termite colonies or other established colonies. To relieve this constant threat the Exterra System works on an ongoing process of monitoring, baiting and eliminating.

# THE SAFE environmentally friendly way to eliminate termites



## How Exterra\* Stations protect your home

All of us would like to think of "terminal" as the best way to describe a termite's fate. Well by installing Exterra Stations around your home, a series of Termite Terminals, you are assured that termites will be eliminated and your home continually and safely protected.

## The Elite method

The Exterra Termite Interception and Baiting System offers an elite standard in termite management. It is certainly long term, effective, family-safe and environmentally responsible termite management, utilising Exterra In-ground Stations with Focus Termite Attractant\*.

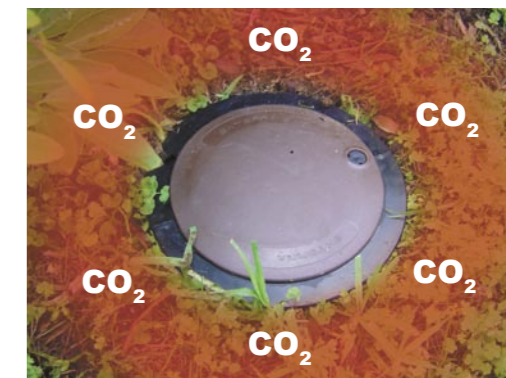


## What's Focus Termite Attractant?

Focus Termite Attractant is a natural, non-toxic, food based additive that is added to the Exterra Station. Once in contact with the soil it works with soil micro-organisms to slowly release a small, precisely determined amount of carbon dioxide (CO<sub>2</sub>) into the soil.

## Termites love CO<sub>2</sub>

It might not be a gourmet meal to us, but minute levels of CO<sub>2</sub> certainly attract termites. University research has proved it. Termites are attracted to levels of CO<sub>2</sub> that mimic those naturally given off by both rotting wood and termite nests, so the CO<sub>2</sub> in the soil directs termites to potential feeding sites. The Focus Termite Attractant in your Exterra Station is doing its job, by naturally directing the termites to an Exterra Station and not your home.





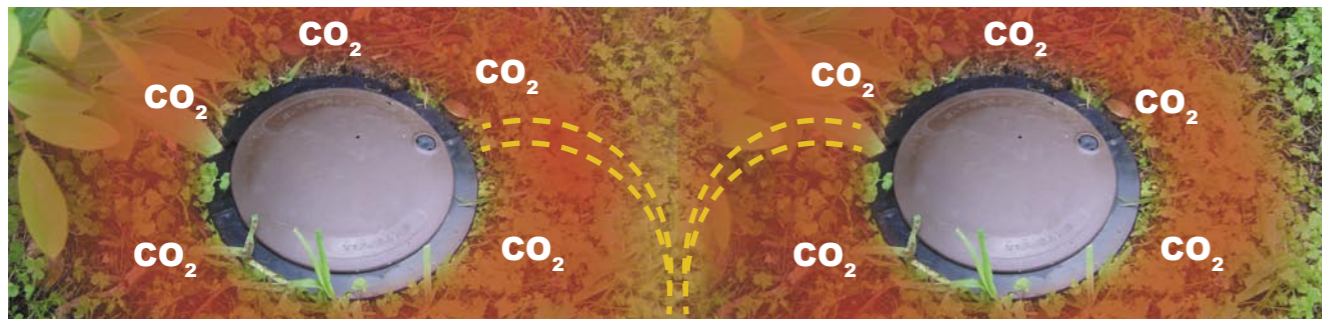
# THE ONLY baiting system that creates a complete Termite Interception Zone around your home

## Larger Exterra Stations with Focus terminate Termites better.

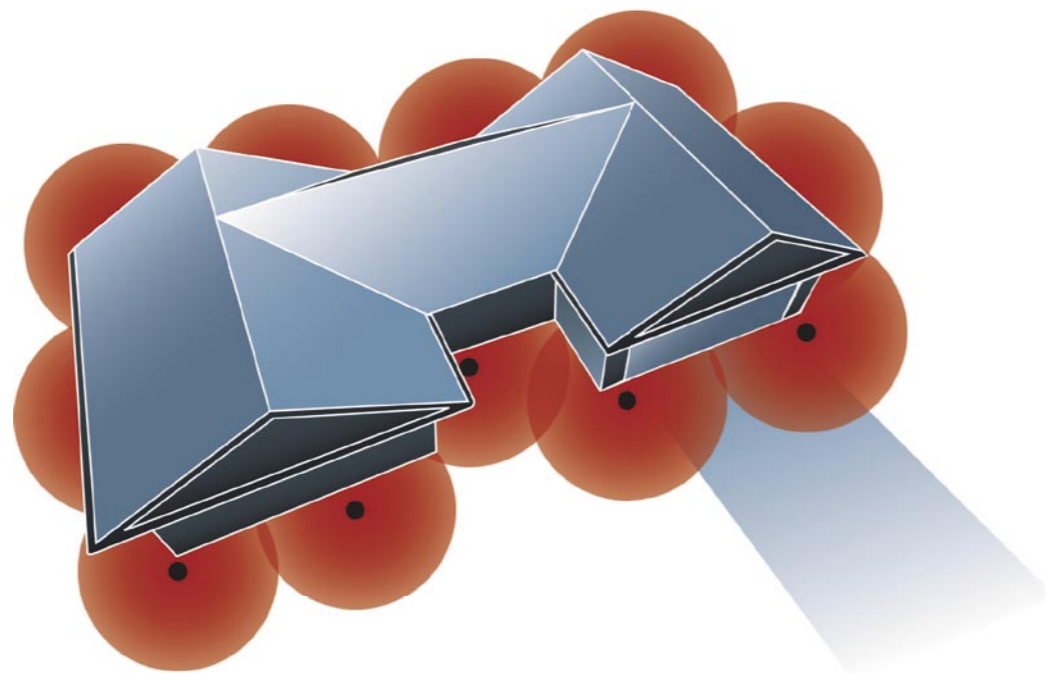
CSIRO studies show that quite simply and obviously, the larger the monitoring station, the quicker any termites in your garden will find it, instead of your house!

So with Focus Termite Attractant producing a naturally engineered concentration of CO<sub>2</sub> that attracts termites directly to the large Exterra Station, you know your home is being optimally protected.

Exterra Stations are nearly four times larger than most other Stations, so once the termites start to follow the CO<sub>2</sub> trail they quickly find the Exterra Stations. Focus produces a two metre radius "termite interception zone" around the large Exterra Stations, which means that when a termite comes within two metres of your Exterra Station it will be attracted by just the right amount of CO<sub>2</sub> and eagerly and happily follow the gourmet trail into the Exterra Station. That means its last supper time and the colony is eliminated, **keeping your home safe.**



As this diagram demonstrates your home is securely protected by the complete and continuous Exterra Termite Interception Zone.



## Will the Exterra Stations attract Termites to my home?

Rest easy, the answer is no. The large Exterra Stations are there to protect your home and will only intercept those termites that have entered into and are actually foraging in your garden. If the Stations weren't there then these termites would eventually seek out and attack your home. If you choose another baiting system, the termites are likely to miss the small stations and again find their way into your home.

**So there is no doubt** only the elite Exterra Termite Interception and Baiting System, with its unique Termite Interception Zone encircling your home, forms the most effective system to protect your home.



Using auger to place Exterra Station.

## Sure Protection that is less Toxic than Salt

It's highly likely that you have a home security system to protect your place from invaders. Well that's how the Exterra Termite Interception and Baiting System can be described. It is there to protect you from the invasion of termites, continually.

After eliminating attacking colonies, Exterra Stations guard your home by monitoring for future invasions; offering a long term termite solution that's easy on the environment.

Don't even think about the old fashioned methods of spraying hundreds of litres of toxic chemicals into the soil around your home. Think what that could do to you and your family. No, think the positive and safe way of eliminating termites with Exterra. Exterra utilises closed



"Termite colony eliminated with Requiem. Note that the termites stopped feeding on the timber. Requiem has a unique stop feed action on termites so once they start feeding on the Requiem they won't damage your home."

and locked Stations with a termite bait less toxic than table salt! How's that for a bonus? You get protection, a product that actually eliminates the entire termite colony and does so without harming the environment and is safe for you, your family and pets!

## It's all so simple!

Exterra Stations are placed around your property to intercept termites. Once intercepted, Requiem\* Termite Bait is added to the large Exterra Station without disturbing the termites. The hungry termites feed on the Requiem and the colony is eliminated. Where active termites are found in your home, Exterra Above-ground Stations allow your termite problem to be dealt with quickly, right at the point of termite attack.







Termites just love to feed in the Exterra Stations.

### The Timber we use is a Treat for Termites.

Eucalypt timber interceptors are used in our large Exterra Stations simply because independent studies have shown that this timber is the most favoured by termites. If it seems like a good meal to termites they will hungrily enter the Station, which means they will be eliminated.

Most other monitoring Stations use softwood timber or cardboard because they are much cheaper, but cheaper certainly doesn't mean better! Softwood timbers rot away

sooner and are less palatable to termites. So where do the termites go? Not to a station with less favoured timber, no, they head to your home because it is more attractive. A further reason to use Exterra's large Stations and eucalypt timber is that some termite species will not even contemplate eating softwood timber, so your home is totally exposed to these termite species.

### Unique, patented design, easy to maintain.

It's important that your baiting system can be inspected and that is why Exterra In-ground Stations are perfectly designed. The patented, open cavity design allows the timber interceptors lining its perimeter to be easily inspected without disturbing the termites. This is not the case with other systems where interceptors are removed disturbing the termites. Exterra Stations also allow bait to be added without disrupting the termite colony.



#Conditions apply.

### Guaranteed to Solve Your Termite Problems.

You need to be completely confident in your product to offer customers a guarantee that you will solve their termite problems#. Well that's how confident we are with the Exterra Termite Interception and Baiting System. We are so confident in its effectiveness and the security it provides to you and your home that we guarantee as a team, your Authorised Exterra Operator and Ensystem, that we will together solve your termite problems.

So if we are that confident, you can be confident in choosing the Exterra elite termite management system. Exterra and your professional pest manager

will protect your home, so you can forget about termite problems. Rest assured the termites will be eliminated, year in, year out, for as long as you maintain your Exterra system.



### The Exterra Quality Tick

Only Exterra offers you the guarantee that all Exterra Authorised Operators are professionals who have completed an in-depth training program in termite baiting and undertake on-going professional development as part of the Exterra Quality Care program.

Plus, only Exterra requires Station bar-coding. All Exterra Authorised Operators are equipped with a handheld computer system to scan the Station Barcodes and record their results. These handheld computers are later synchronised with the Exterra Computer Management program at the Ensystem Corporate Head Office to ensure third party verification of the pest managers systems and reliability to give you that extra confidence of knowing your home is well protected.

