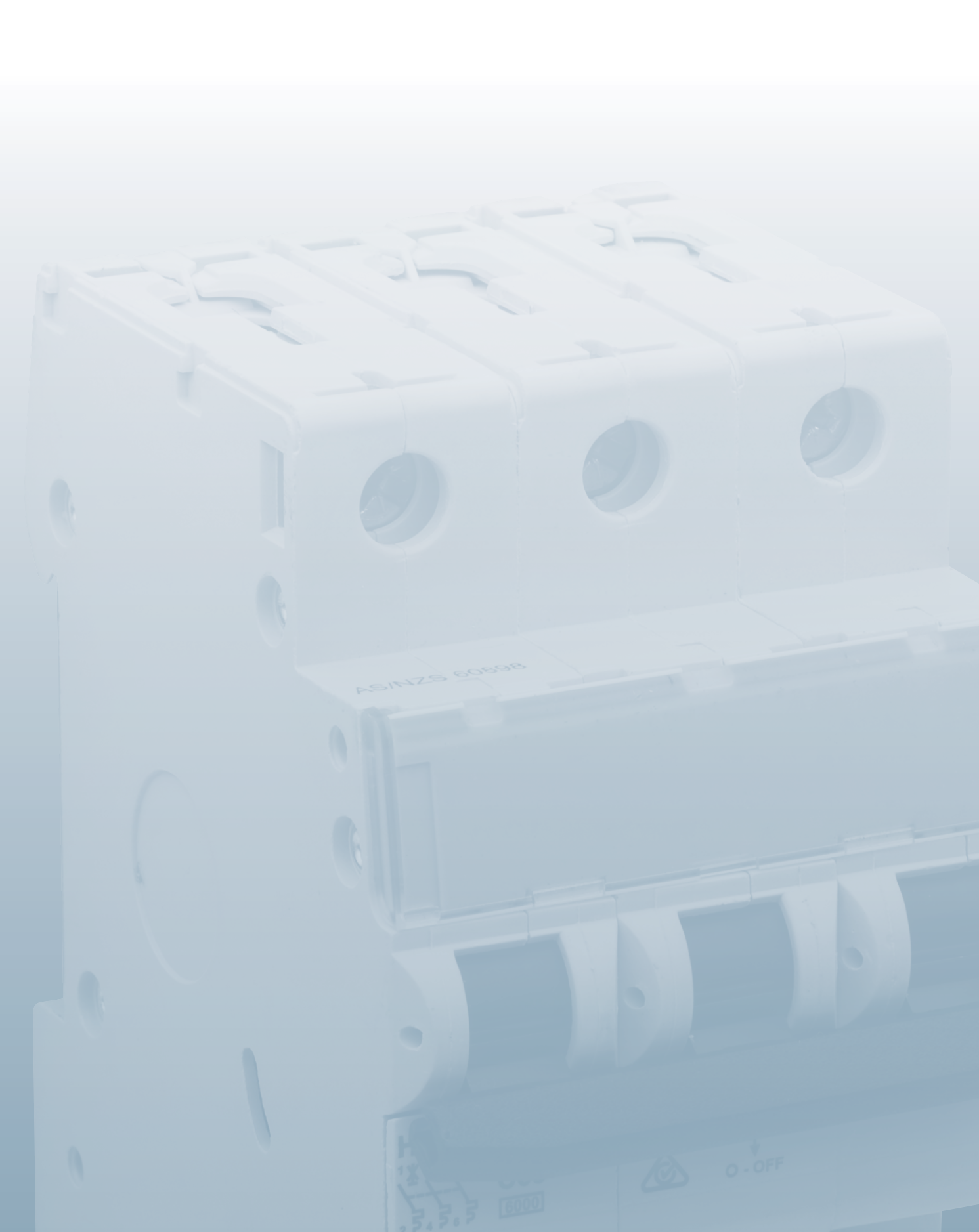


Section 1

Switchboards & Enclosures



Switchboards & Enclosures

Section 1

MCBs - Miniature circuit breakers



Pack	Cat No.	C curve. Thermal magnetic. Current limiting. Complies with AS/NZS 60898 DIN rail mounting. 1 pole, 4.5kA, C curve, 240V Size 17.5mm (1 module).
2	HL4106	6A, 1 pole 4.5kA, C Curve, miniature circuit breaker
2	HL4110	10A, 1 pole 4.5kA, C Curve, miniature circuit breaker
2	HL4116	16A, 1 pole 4.5kA, C Curve, miniature circuit breaker
2	HL4120	20A, 1 pole 4.5kA, C Curve, miniature circuit breaker
2	HL4125	25A, 1 pole 4.5kA, C Curve, miniature circuit breaker
2	HL4132	32A, 1 pole 4.5kA, C Curve, miniature circuit breaker
2	HL4140	40A, 1 pole 4.5kA, C Curve, miniature circuit breaker
2	HL4150	50A, 1 pole 4.5kA, C Curve, miniature circuit breaker
2	HL4163	63A, 1 pole 4.5kA, C Curve, miniature circuit breaker



Pack	Cat No.	2 pole, 6kA, C curve, 240/415V Size 35mm (2 modules).
6	HL6210	10A, 2 pole 6kA, miniature circuit breaker
6	HL6216	16A, 2 pole 6kA, miniature circuit breaker
6	HL6220	20A, 2 pole 6kA, miniature circuit breaker
6	HL6225	25A, 2 pole 6kA, miniature circuit breaker
6	HL6230	30A, 2 pole 6kA, miniature circuit breaker
6	HL6240	40A, 2 pole 6kA, miniature circuit breaker
6	HL6250	50A, 2 pole 6kA, miniature circuit breaker
6	HL6263	63A, 2 pole 6kA, miniature circuit breaker



Pack	Cat No.	1 pole, 6kA, C curve, 240V Size 17.5mm (1 module).
12	HL6106	6A, 1 pole 6kA, miniature circuit breaker
12	HL6110	10A, 1 pole 6kA, miniature circuit breaker
12	HL6116	16A, 1 pole 6kA, miniature circuit breaker
12	HL6120	20A, 1 pole 6kA, miniature circuit breaker
12	HL6125	25A, 1 pole 6kA, miniature circuit breaker
12	HL6132	32A, 1 pole 6kA, miniature circuit breaker
12	HL6140	40A, 1 pole 6kA, miniature circuit breaker
12	HL6150	50A, 1 pole 6kA, miniature circuit breaker
12	HL6163	63A, 1 pole 6kA, miniature circuit breaker



Pack	Cat No.	3 pole, 6kA, C curve, 240/415V Size 52.5mm (3 modules).
4	HL6310	10A, 3 pole 6kA, miniature circuit breaker
4	HL6316	16A, 3 pole 6kA, miniature circuit breaker
4	HL6320	20A, 3 pole 6kA, miniature circuit breaker
4	HL6325	25A, 3 pole 6kA, miniature circuit breaker
4	HL6332	32A, 3 pole 6kA, miniature circuit breaker
4	HL6340	40A, 3 pole 6kA, miniature circuit breaker
4	HL6350	50A, 3 pole 6kA, miniature circuit breaker
4	HL6363	63A, 3 pole 6kA, miniature circuit breaker

MCBs - RCDs (RCBOs)



Pack	Cat No.	2 pole RCBOs, C curve, type AC
Complies with AS/NZS 61009. C curve, current limiting MCB, 6kA, Magnetic operation RCD, type AC 30mA. 240~, 1 pole + N. 36mm wide (2 modules), 35mm DIN rail mounting.		
1	HLRCB030-206	6A, 2 pole, AC, 30mA RCBO
1	HLRCB030-210	10A, 2 pole, AC, 30mA RCBO
1	HLRCB030-216	16A, 2 pole, AC, 30mA RCBO
1	HLRCB030-220	20A, 2 pole, AC, 30mA RCBO
1	HLRCB030-225	25A, 2 pole, AC, 30mA RCBO
1	HLRCB030-232	32A, 2 pole, AC, 30mA RCBO
1	HLRCB030-240	40A, 2 pole, AC, 30mA RCBO



Pack	Cat No.	2 pole RCBOs, C curve, type A
1	HLARCB030-206	6A, 2 pole, A, 30mA RCBO
1	HLARCB030-210	10A, 2 pole, A, 30mA RCBO
1	HLARCB030-216	16A, 2 pole, A, 30mA RCBO
1	HLARCB030-220	20A, 2 pole, A, 30mA RCBO
1	HLARCB030-225	25A, 2 pole, A, 30mA RCBO
1	HLARCB030-232	32A, 2 pole, A, 30mA RCBO
1	HLARCB030-240	40A, 2 pole, A, 30mA RCBO

RCDs (RCCBs)



Pack	Cat No.	2 pole RCDs, Type AC- Electresafe
Residual Current Device. Complies with AS/NZS 61008. Type AC. 36mm wide (2 modules). 35mm DIN rail mounting.		
1	HLRCD30-225	25A, 2 pole, AC, 30mA
1	HLRCD30-240	40A, 2 pole, AC, 30mA

1	HLRCD30-263	63A, 2 pole, AC, 30mA
1	HLRCD30-280	80A, 2 pole, AC, 30mA



Pack	Cat No.	2 pole RCDs, type A- Electresafe
1	HLARCD30-225	25A, 2 pole, A, 30mA
1	HLARCD30-240	40A, 2 pole, A, 30mA
1	HLARCD30-263	63A, 2 pole, A, 30mA
4 pole RCDs, type AC- Electresafe		
1	HLRCD30-425	25A, 4 pole, AC, 30mA
1	HLRCD30-440	40A, 4 pole, AC, 30mA
1	HLRCD30-463	63A, 4 pole, AC, 30mA
1	HLRCD30-480	80A, 4 pole, AC, 30mA

Changeover switches



Pack	Cat No.	32A day-off-night
12	HCS132	32A, 1 pole, 240-415V~ changeover switch
12	HCS232	32A, 2 pole, 240-415V~ changeover switch

Surge diverters (SPDs)



Pack	Cat No.	Surge diverters
Size 18mm wide (1 module). DIN rail mounting. Plug-in module.		
1	H6SD	250V 1 pole surge diverter. 275V max continuous rating. Diverts up to 40kA. Limits 6kV surges to 1.16kV.
1	H6SDM	Replacement module for H6SD surge diverter

Switchboards & Enclosures

Section 1

Standard Range powerpoints 230 - 240V a.c.



Pack	Cat No.	Single powerpoint, DIN rail mounting Plate size: 67 x 44mm. 4 modules wide, 53mm projection.
10	787DIN	10A single powerpoint with DIN bracket
10	787DIN15	15A single powerpoint with DIN bracket

Main switches for surface mounting 240V a.c.



Pack	Cat No.	240V ~ 1 pole, 415V ~ 3 pole Reference standards AS/NZS60947-3 Refer service rules for required size of consumers mains. HLS series switch terminals are compatible with HL series MCBs and RCDs 35mm DIN rail mounting. HLS series Same height as HL Series MCBs and RCDs.
10	HLS163	63A, 1 pole, 240V- isolating switch
10	HLS1100	100A, 1 pole, 240V- isolating switch
3	HLS363	63A, 3 pole, 415V- isolating switch
3	HLS3100	100A, 3 pole, 415V- isolating switch



Pack	Cat No.	(Single Pole), 415V a.c. (2 & 3 Pole) All HPM surface mounting main switches feature heavy duty, double break silver contacts and have line and load side tunnel type clamping terminals. The tunnel terminals take up to 25mm ² conductors. Facilities are included to seal off line and load side terminals screws. All switches are M rated to AS3133 indicating their suitability for use on electric motors. Mounting holes: top right and bottom left corners. 60 x 16mm mounting centres. 1 pole, 240V Size 26mm wide x 71mm high x 44mm deep.
10	B135	35A, 1 pole, back entry main switch, rated M120
10	B165	65A, 1 pole, back entry main switch, rated M150
10	B180	80A, 1 pole, back entry main switch, rated M120
10	F135	35A, 1 pole, front entry main switch, rated M120
10	F180	80A, 1 pole, front entry main switch, rated M150



Pack	Cat No.	2 pole, 415V a.c. Size 52mm wide x 71mm high x 44mm deep.
5	B235	35A, 2 pole, back entry main switch, rated M120
5	B265	65A, 2 pole, back entry main switch, rated M150
5	B280	80A, 2 pole, back entry main switch, rated M150
5	F265	65A, 2 pole, front entry main switch, rated M150
5	F280	80A, 2 pole, front entry main switch, rated M150



Pack	Cat No.	3 pole, 415V a.c. Size 52mm wide x 71mm high x 44mm deep.
5	B335	35A, 3 pole, back entry main switch. rated M120
5	B365	65A, 3 pole, back entry main switch. rated M150
5	B380	80A, 3 pole, back entry main switch. rated M150
5	F335	35A, 3 pole, front entry main switch. rated M120
5	F380	80A, 3 pole, front entry main switch. rated M150

Time switches



Pack	Cat No.	Time switches - DIN rail mounting 1 module wide
1	HL03730	24 hour electro-mechanical time switch - DIN rail mount. 1 Module. 230V~ +10% -15% Contact rating, 16A, cos = 1, 3 position switch: ON-OFF-AUTO. Minimum switching period: 15 min. No working reserve.
1	HL03705	Digital weekly time switch. DIN rail mount. 1 module. Contact rating, 16A, cos = 1, 28 program blocks, 5 way switch, 6 years working reserve.



Pack	Cat No.	Time switches - Surface mounting
4	808/1	24 hour synchronous time switch. Push tab adjustment. Contact rating 240V, 16A, M40 for motor loads. Manual override switch. Minimum switching period - 30 min.

Plug-in circuit breakers 240V a.c.



Pack	Cat No.	Plug-in circuit breakers Plugs into porcelain fuse bases to replace re-wireable fuse wedges.
5	DCB108	8A plug-in circuit breaker for 8A & 10A lighting circuits
5	DCB116	16A plug-in circuit breaker for 15A & 16A lighting circuits
5	DCB120	20A plug-in circuit breaker for 20A hot water & power circuits
5	DCB132	32A plug-in circuit breaker for 30A & 32A stove circuits

Enclosures



Pack	Cat No.	HC surface mounting enclosures Will fit into customer equipment area on NSW meter box panel. Complies AS3132, AS3000/2.21.1.2. (Separate neutral and earth bars on rear of meter box panel).
10	HC01S	1 pole
6	HC02S	2 pole
4	HC03S	3 pole
4	HC04S	4 pole



Pack	Cat No.	HEE surface mounting enclosures All supplied with door, neutral & earth bars, busbar, pole fillers, label strips & 35mm DIN rail.
1	HEE9S	9 pole surface enclosure, 214mm H x 225mm W x 104mm D
1	HEE12S	12 pole surface enclosure, 214mm H x 279mm W x 104mm D
1	HEE18S	18 pole surface enclosure, 214mm H x 383mm W x 104mm D
1	HEE24S	24 pole surface enclosure, 407mm H x 279mm W x 112mm D



Pack	Cat No.	HEE flush mounting enclosures All supplied with door, neutral & earth bars, busbar, pole fillers, label strips & 35mm DIN rail.
1	HEE9F	9 pole flush enclosure, 231mm H x 228mm W x 68mm D cut-out
1	HEE12F	12 pole flush enclosure, 223mm H x 282mm W x 68mm D cut-out
1	HEE18F	18 pole flush enclosure, 223mm H x 392mm W x 71mm D cut-out
1	HEE24F	9 pole flush enclosure, 362mm H x 282mm W x 68mm D cut-out



Pack	Cat No.	Weatherproof enclosures - IP54 (IP65 with sealed conduit entry glands). Black sides for on-site drilling to suit specific glands, bushes etc. Sealable clear polycarbonate clip down door. Supplied with neutral bar, earth bar, busbar, pole filler (6 pole, 12 x 9mm), number strip and 35mm DIN rail. Complies with AS3132, AS3000/2.21.1.2.
1	HWEK4	4 pole surface enclosure, 180mm H x 110mm W x 100mm D
1	HWEK8	8 pole surface enclosure, 180mm H x 182mm W x 110mm D
1	HWEK12	12 pole surface enclosure, 180mm H x 254mm W x 110mm D



Pack	Cat No.	HM pole fillers
1	HPF5	5 pole, (4 x 18mm & 2 x 9mm). Suits material thickness 1.5mm max. Pole fillers for HWEK & HC series, type V4 (4 pole, 8 x 9mm) available to special order.
1	HEEPF5	Bag of 4 x 18mm & 2 x 9mm pole fillers. Pole fillers for HEE series.
1	HMCBL	A4 Label sheet for NCB/RCD