

The logo features the letters 'ESS' in a large, bold, yellow font with a black outline. The letters are centered within a black rectangular field. This field is flanked by vertical stripes: three yellow stripes on the left and three yellow stripes on the right, with a series of thinner grey stripes in between. The entire logo is set against a white background with grey vertical bars on the far left and right sides.

ESS

Product & Services Guide 2011

Escalator Safety Services Pty Ltd

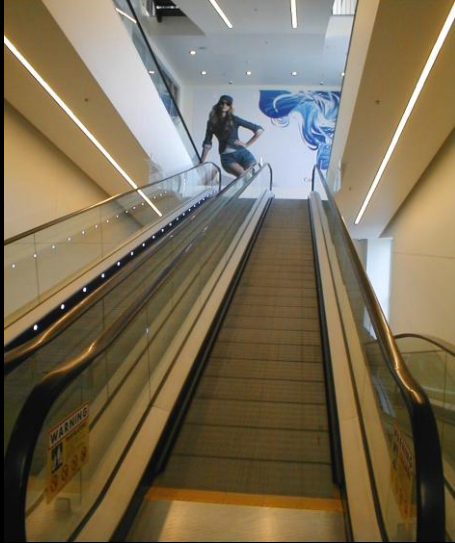
18 Scott Road, Cranbourne South VIC 3977

Phone: 03 5978 6575

Fax: 03 5978 6675

info@escalator-safety.com

Products & Services



IN-SITU SERVICES

Hand Rail Hygiene
 Tread Safety Grip
 Tread Brush Cleaner
 Landing Plate Grip
 Tread Rib Coat
 Rib Rebuild Razors
 Rib Rebuild Score
 Rib Rebuild Chip
 Rib Rebuild Burr
 Rib Rebuild Edge
 Demarc Safety Lines
 OH&S Report

OFF SITE SERVICES

(Powder Coating)
 Demarc Safety Comb
 Tread Step Coat

Escalator Safety Services (ESS) offers a **cost-effective, in-situ alternative** to replacing or removing repair damaged tread plates. Our integrated services extend the life of escalators, travelators and conveyors.

Our OH&S Survey Report helps Risk Managers and Facility Managers remain compliant with International and Australian safety standards.

ESS integrated services and programs:

- Hand Rail Hygiene
- Tread Safety Grip
- Landing Plate Safety Grip
- Tread Rib Coat
- Tread Step Coat
- Tread Brush Cleaner™
- Rib Rebuild Razor
- Rib Rebuild Score
- Rib Rebuild Chip
- Rib Rebuild Burrs
- Rib Rebuild Edge
- Demarc Safety Lines
- Demarc Safety Comb
- OH&S Survey Report

ESS has developed a long business relationship with Service Providers such as Otis, Kone, Schindler, ThyssenKrupp and many independents and work closely with consultants and management across Australia and New Zealand.

ESS work with Facility Managers and contract cleaners to avoid abrading the tread plate channel and substrate.

See our website: www.escalator-safety.com



Escalator Safety Services Pty Ltd

Phone: 03 5978 6575

info@escalator-safety.com

Fax: 03 5978 6675

Escalator tread plate damage.

ESS OH&S Survey Report indicates when abrasive cleaning brushes are used during scheduled cleaning, the channel coating on Escalator and Travelator tread plates will be removed within 12 months on new units. This will continue to lower the density or channel thickness of the tread plates leading to structural weakness.

Corporations can invest hundreds of thousand dollars on new equipment, but if good cleaning procedures are not installed, it will dramatically lose their corporate image or investment within 12 months.

ESS have resolved this aggressive brush cleaning practice by installing their Tread Brush Cleaner 256, which is designed to clean both the tread plate channel and rib surface in one operation. This light weight cleaning brush is under 9Kg, installed at the exit point, uses a non aggressive bristle and low friction contact to protect new and existing coatings.

Why destroy your investment?

Replace aggressive cleaning equipment and practices with the ESS Tread Brush Cleaner 256 and protect your investment.

For further information, case histories, client recommendations and package deals contact Escalator Safety Services now.

Kind Regards

Richelle Ryan
National Facilities Manager



Escalator Safety Services Pty Ltd

18 Scott Road, Cranbourne South, VIC 3977

Phone: 03 5978 6575

Fax: 03 5978 6675

info@escalator-safety.com

www.escalator-safety.com



Hand Rail Hygiene 222 Rapid hygiene testing scientifically measures the presence of ATP (adenosine triphosphate) on a hand rail surface and measures how much biological residue is on the surface. The organic residue measures could be bacteria, mould, food, skin residues, saliva, faeces or anything biological.



Tread Safety™ Grip 254

Tread Safety™ Grip 254 is an integrated **In-situ** application designed to improve the Safety level of pedestrian traffic on wet or dry Escalator and Travelator tread plates. The tread grip application reduces slippage and is applied in-situ ready for service within eight hours.

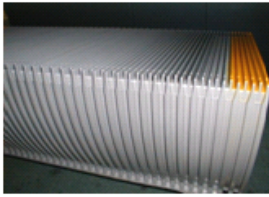
ESS supply the **Tread Brush Cleaner™ 267** for FREE with 2 or more Tread Safety™ Grip applications. Tread Brush Cleaner™ 267 is designed to clean both the Tread Grip and channel surfaces. This ensures optimum safety, performance, corporate image and ease of cleaning under the service warranty period.



Landing Plate Safety Grip 374 is designed to improve the safety level of pedestrian traffic on wet or dry Escalator and Travelator landing plates. The system is applied “In-situ” and ready for service within eight hours. The metalized coating system provides a high profile image and easy to clean surface using light detergent and wet vacuum system. System is applied to the top of the landing plate “Surface Profile” for safety and ease of cleaning.



Tread Rib Coat 252 is the professional Corporate Image finish for restoring unsightly delaminated and abraded rib surface treads. Similar to powder coatings in appearance, performance and durability the Tread Rib Coat 252 is applied “In-Situ” and ready for service within eight hours. When corporate image is of high priority and downtime a major factor Tread Rib Coat 252 is the answer. To maintain performance, durability, corporate image and ease of cleaning Tread Rib Coat 252 is initially supplied free with the ESS Tread Brush 267 during the warranty period.



PC™ Step Coat (Off Site Service) is an integrated easy to clean high impact powder coating system designed to resist foot traffic, shopping trolley wheels, soiling.

Tread Safety™ Step Demarc 150 As an additional safety feature where demarcation lines can be added during the powder coating treatment system providing the ultimate in performance and corporate image.

This is a 3 (three) part system.

Tread Brush Cleaner™ 267 This system is initially supplied free with the approved and patented cleaning brush during the warranty period.



Tread Brush Cleaner™ 267 is an integrated brush cleaning system

designed to clean **Tread Safety™ Grip 254** grip surface, channels and demarcation lines of a Travelator or Escalator unit in one operation.

An important feature is it reduces channel abrasion which can weaken the tread plate structural strength.

Pedestrian foot security or traction can be enhanced during regular cleaning by removing lubricants and soils, which can clog the “Safety Grip Profile” being the primary safety feature. Only weighs 9 kgs!



Rib Re-Build™ Razor 260 is an integrated **In-situ** service that restores sharp ‘razor blades’ and damaged rib treads caused through metal objects becoming jammed in the comb plate. A Razor can also catch clothing, footwear, cords and shoe laces which may lead to personal injury.

Using a special metalized compound, Escalator and Travelator ribs can be restored providing a safer public environment and returning the unit back into service within 8 hours.



Rib Rebuild™ Score 261 is an integrated In-situ service that repairs ‘scored’ and damaged rib treads caused through metal objects becoming jammed in the comb plate. A Score can also be a burred edge which can catch clothing, footwear, cords and shoe laces which may lead to personal injury.

Using a special metalized compound, Escalator and Travelator ribs can be restored providing a safer public environment and returning the unit back into service the next day.

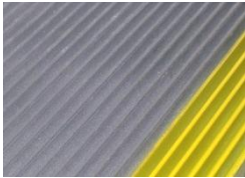


Rib Rebuild™ Chip 258 is an integrated system designed to rebuild broken or damaged rib treads caused through impact or objects snapping the rib profile making it unsafe or hazardous for public use.

Using a molecular metal compound, Escalator and Travelator damaged ribs can be restored “**In-situ**” and the unit returned back into service within eight hours.



Rib Rebuild™ Edge 255 is designed as an “Offsite” restoration service for the rebuilding of worn abraded tread plate edges, due to misalignment on Escalator and Travelator plates. Applying a molecular metal compound avoids heat distortion and is ready for installation within eight hours. Escalator and Travelator tread plates can be re-installed providing a safer public environment and returning unit back into service. To avoid tread plate channel, rib and coating abrasion, ESS recommend using **Tread Brush Cleaner™ 267**



Demarc Safety™ Lines 248 is an integrated environmentally friendly demarcation safety line service that is Non-Toxic, Non-Hazardous, Non-Flammable and Non-Tainting. Process incorporates removal of lubricants, soils and flakey paint coatings prior to the application of a durable Polyurethane Laminate coating. To prevent tread plate and coating abrasion, ESS recommend using **Tread Brush Cleaner™ 267**



Demarc Safety™ Comb Plate 250 is an integrated system, it is a high build powder coating designed to resist foot traffic, shopping trolley wheel impact and cleaning systems to the comb plate. The finish provides pedestrian entry/exit awareness, high impact resistance, durability and ease of cleaning over conventional coating systems. New or existing Comb Plates are treated “Off-Site” for optimum durability & impact.



Hand Rail Hygiene 222

“For Safety, Hygiene and Corporate Image”

Good hygiene practices are essential for preventing the spread of infection in all walks of life.

Moving Walk Hand Rails come in contact with countless people every day and represents a high risk reservoir for cross contamination and transmission of contagious diseases.

The physical properties of hand rails also increases the hygiene risks by virtue of their porous surface and black colour, makes verifying cleaning processes difficult to assess. Despite these problems, it is well accepted that visually clean is a poor indicator of true hygiene levels, as pathogenic bacteria are microscopic.

Rapid hygiene testing scientifically measures the presence of ATP (adenosine triphosphate) on a hand rail surface and measures how much biological residue is on the surface. The organic residue measures could be bacteria, mould, food, skin residues, saliva, faeces or anything biological.

ATP testing is the only cleaning validation test that can quantify not only your contamination risk but cleaning efficiency.

An integrally part of our **Hand Rail Hygiene 222** is the scientific verification of our unique process. ATP hygiene testing is technology trusted in the food and healthcare industries uses a specific bioluminescent technology that detects organic contamination in only 15 seconds, allowing real time detection. It detects invisible organic residues and microbes on hand rail surfaces. ESS can test before and after applying Hand Rail Hygiene 222, and provide a clear demonstration of the effectiveness of the cleaning procedure, as our guarantee of quality.

Treatment is Therapeutic Goods Administration (TGA) Certified as a surface sanitiser against Golden Staph (MRSA), Vancomycin resistant Enterococcus (VRE), E-coli and Salmonella typhimurium with a Day 1 efficacy of Log 6, >99.99% kill rate with a residual effects for up to 28 days. Also tested in the U.S.A. by Microbiotest Laboratory for Swine Influenza Virus (H1N1) with a kill rate of >99.996%.

Description	Information
Application Service	Escalator/Travelator
In-Situ Treatment	ATP Bioluminescence
Application substrate	Rubber Hand Rails
ATP Verification	15 seconds – Not days
Treatment Guide	30 minutes per unit, Non Toxic
Pedestrian Access	After 30 minute Treatment
Verification Test	Relative Light Units (RLU)
Longevity Guide	1 – 3 months* Traffic flow
RLU Thresholds	Pass <10, Caution <29, Fail >30
Glossary	View website for details

ESS Hygiene Benefits

- Real Time Results allows Real Time Response
- ESS monitoring can identify which handrails are at risk.
- Treatment optimises and verifies that cleaning procedures are working. Also optimises chemical & sanitiser usage.
- Cleaning verification is an essential requirement of HACCP programs.
- Management tool for OH&S monitoring programs.
- A safer public environment protects corporate image.
- Demonstrates due diligence – reduces liability risks
-

www.escalator-safety.com



Hygiene Why Risk It?

Escalator Safety Services Pty Ltd

Ph: **03 5978 6575**

info@escalator-safety.com

Copyright © 2009-Escalator Safety Systems Pty Ltd

All Rights Reserved

Issued: 8-Apr-11



Tread Safety™ Grip 254

“Safety & Corporate Image Specialists”

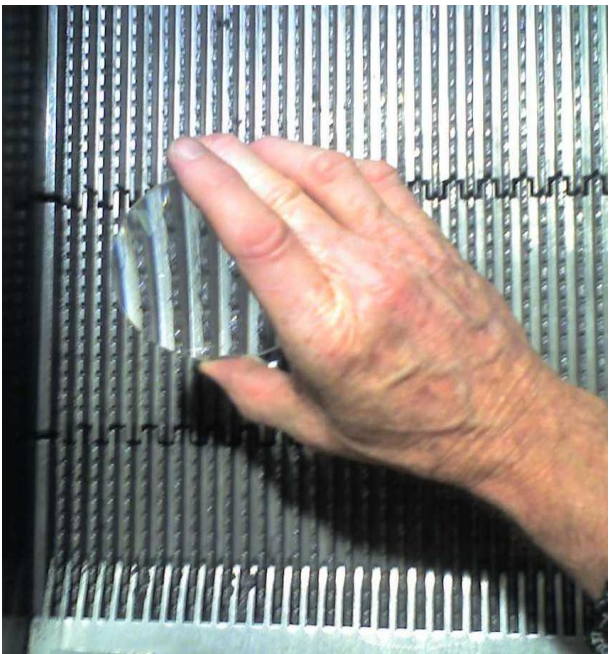
Tread Safety™ Grip 254 is an integrated In-situ application designed to improve the Safety level of pedestrian traffic on wet or dry Escalator and Travelator tread plates. The tread grip application reduces slippage and is applied in-situ ready for service within eight hours.

Tread Safety™ Grip 254 is supplied initially free with the approved Tread Brush Cleaner™ 267 designed to clean both the foot grip and channel surfaces. This ensures optimum safety, performance, corporate image and ease of cleaning under the service warranty period.

Description	Information	Applications
-------------	-------------	--------------

Patent Approval	2009
Accreditation	CAS Compliant 2640
Copyright	ESS © 2007
Public Liability	20 Million & Current
Application Use	Travelator/Escalator
Incline or Elevation	Travelator 10-12 Degrees
Application In-Situ	Molecular Weld Coating
Application Profile	Aluminum Safety Grip
Pedestrian Traffic	Wet or dry conditions
Pedestrian Access	After 8 Hours @ 20C
Environment	Minor Odour < 2 Hours
Warranty Period	Twelve Months
Longevity Guide	Over 12 Months

Traffic Flow Per Week	Cleaning Schedule
15000 People	Clean after 7 days with Tread Brush Cleaner™



Management Assistance

Security Contact	Provide Mobile Number
Public Safety	Provide Scissor Barriers
Unit Operation	Provide Unit Key
Unit Treatment	Provide Pre-Cleaning
Unit Quotation	Circular Metre Length
Unit Cleaning System	Use Tread Brush Cleaner™
Scheduled Notice	14 days notice preferred

Reduces Replacement Cost
Reduces Compensation claims
Avoids Downtime/Inconvenience
Improves Pedestrian Safety
Maintains Corporate Image

The above information is based on similar proven molecular coating engineering systems for over 30 years and is recommended by major Service Providers, Moving Walk Consultants, Retail Sector and Corporations.

Disclaimer: The information given on this data sheet is based on many years experience and is correct to the best of our knowledge. Clients are requested to conduct their own trials to prove the acceptability of a product or service for their use. Please contact our Customer Service for any assistance.

www.escalator-safety.com



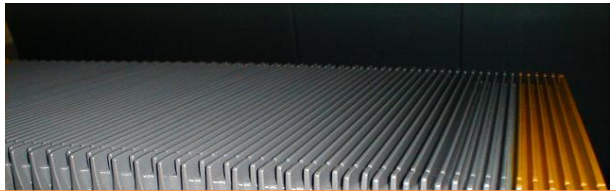
Tread Rib Coat 252

“Safety & Corporate Image Specialists”

Tread Rib Coat 252 is the professional Corporate Image finish for restoring unsightly delaminated and abraded rib surface treads. Similar to powder coatings in appearance, performance and durability the Tread Rib Coat 252 is applied “In-Situ” and ready for service within eight hours. When corporate image is of high priority and downtime a major factor, Tread Rib Coat 252 is the answer. To maintain performance, durability, corporate image and ease of cleaning, Tread Rib Coat 252 is initially supplied free with the ESS Tread Brush 267 during the warranty period.

Product Performance Data Application Benefits

Coating Type	Non Spray System
Coating Application	In-Situ Service
Coating Treatment	Tread Plate Rib Surfacing
Coating Density	300> <400 Microns
Coating Colour	Aluminum or Black
Coating Finish	Smooth – Semi Gloss Abrasive – Flat Texture
Coating Longevity	Three years @ 30,000ppw
Abrasion Resistance	ASTM C779 0.24mm/30mins
Ready for Service	Eight Hours @ 20C
Cleaning System	ESS Tread Brush 267
Cleaning Schedule	After 7 days cure
Warranty Period	12 Months



Tread Rib Coat 252
For Corporate Image

- Maintains Corporate Image
- Maintains color uniformity
- Durable & Hard wearing
- Easy to clean using ESS brush
- Applied “In-Situ”
- Low VOC – Low odour
- No downtime
- Includes **FREE** brush per 4 units
- Includes **FREE** OH&S Survey

Warranty Exclusions	Mechanical Impact/Abrasion Abrasive Cleaning Systems Tread Rib Razors, Scores & Chips
----------------------------	--

ESS Service Support Customer Support

Quotation Guide	Unit Length or Plate Quantity
Tread Plate Condition	Free of Rib Scores, Razors & Chips
Job Scheduling	Prefer 30 Day lead time

For a no obligation quotation and free OH&S Survey Report call ESS or your Service Provider now.

Disclaimer: The information given on this data sheet is based on many years experience and is correct to the best of our knowledge. Clients are requested to conduct their own trials to prove the acceptability of a product or service for their use. Please contact our Customer Service for any assistance.



Tread Step Coat 100

“Safety & Corporate Image Specialists”

Tread Safety™ Step Coat 100 is an integrated easy to clean high impact powder coating system designed to resist foot traffic, shopping trolley wheels, soiling.

Tread Safety™ Step Demarc 150 is an additional safety feature where demarcation lines can be added during the powder coating treatment system, providing the ultimate in performance and corporate image.

Tread Brush Cleaner™ 267 This system is initially supplied free during the warranty period.

Description	Information	Applications
-------------	-------------	--------------

**Accreditation
Public Liability
Copyright**

**CAS Compliant 2640
20 Million & Current
ESS © 2011**

Coating Type
Coating Application
Coating Treatment
Coating density
Expected longevity
Service Warranty

Powder Coating System
Off-Site Service
Tread plate & riser
300><400 Microns
10 years
12 Months, excludes impact
& abrasion

Production Guide
Production Schedule
Turn-around time

Existing units 14 days
14 > 30 Days preferred
Estimated 100 plates 7 days

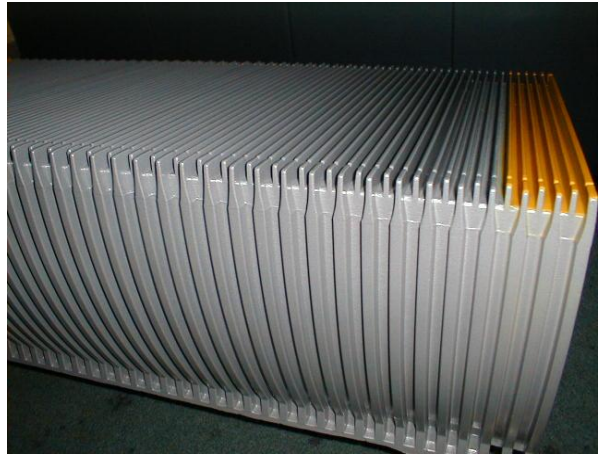
Requirements:

Centre Management:

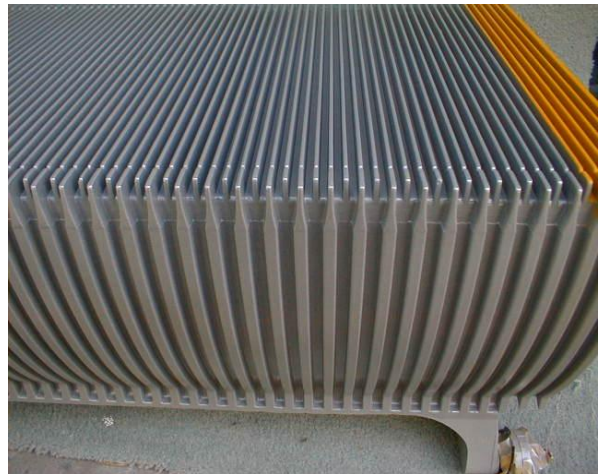
Quotation Guide
Tread Step Plates

Provide Tread Step Quantity
Score and chip free

Colour Choice



Tread Safety™ Step Riser with Demarcation



International

Alternative

Disclaimer: The information given on this data sheet is based on many years experience and is correct to the best of our knowledge. Clients are requested to conduct their own trials to prove the acceptability of a product or service for their use. Please contact our Customer Service for any assistance.

www.escalator-safety.com

Escalator Safety Services Pty Ltd

Ph: **03 5978 6575**

info@escalator-safety.com



Tread Brush Cleaner 267

“Safety & Corporate Image Specialists”

Tread Brush Cleaner™ 267 is an integrated brush cleaning system designed to clean **Tread Safety™ Grip 254** grip surface, channels and demarcation lines of a Travelator or Escalator unit in one operation.

This system is also designed to reduce ESD (Electro-Static Discharge) on moving walks. The Anti-Static longevity treatment is based on the average weekly pedestrian traffic flow of a moving walk and monitoring that treatment over a given period, these results can also be recorded in the ESS OH&S Safety Report and forwarded to the Operations/Facility or Risk Manager for scheduling future treatments.

An important feature of the ESS Tread Brush cleaning system helps extends the longevity of protective coatings and reduces channel abrasion.

The multi level brush bristle is designed to improve foot traction, reduce coating removal and channel abrasion.

Regular cleaning helps remove lubricants and soils which can clog the “Safety Grip Profile” being the primary safety feature. Only weighs 9kgs!

Still having issues with static, try the Tread Anti-Static solution products: - Tread Anti-Static Solution 266 (Available in 5Lt or 20Lt)

The Tread Brush Cleaner 267 can also be used on any other Moving Walks, escalators, travelators and conveyers. Always on a dry run first, for heavy soiling, proteins etc, you can use a similar solution to Spray and Wipe, spray lightly in front of the unit and run till satisfied.

Description	Information	Applications
-------------	-------------	--------------

Tread Brush Cleaner™ Copyright Tread Cleaning
 Cleaning Method
 Chemical if needed
 Brush Pad Width
 Brush Plate Width
 Power Source

Patent Pending 2008
ESS © 2008
In-situ Application
 In-situ Rigid Pad Brush
 Degreaser/Cleaner
 250mm Multi Level
 1000, 900, 800 & 600
 Moving Walk motion

Free delivery Australia

Brush Pad Replacements

1 Unit
 4 Unit Bulk order
 8 Unit Bulk order

Code 268
 Code 268 4
 Code 268 8

Demarc Brush Replacement

4 Units
 8 Units
 12 Units

Code 269 4
 Code 269 8
 Code 269 12

Moving Walk Installation
 Scheduled Cleaning
 Mega Cleaning Guide

Secure @ Exit Comb Plate
 Run DRY till satisfied
 Run DRY till satisfied
 Run WET till satisfied
 150> <200LM then clean
 *Subject to traffic flow
 Pressure Detergent Wash
 9 Kg

Pad Performance Guide
 Pad Replacement Guide
 Pad Cleaning Guide
 Unit Nett Weight

Requirements:

Safety Barriers
 Moving Walk Key
 Detergent/Degreaser
 Pressure Hand Spray

Centre Management:

Install Scissor type
 Stop/Start operations
 For heavy duty cleaning
 For heavy duty cleaning



Disclaimer: The information given on this data sheet is based on many years experience and is correct to the best of our knowledge. Client are requested to conduct their own trials to prove the acceptability of a product or service for their use. Please contact our Customer Service for any assistance.

www.escalator-safety.com

Escalator Safety Services Pty Ltd

Ph: 03 5978 6575

info@escalator-safety.com

Copyright © 2011-Escalator Safety Systems Pty Ltd

All Rights Reserved



Rib Rebuild™ Razor 260

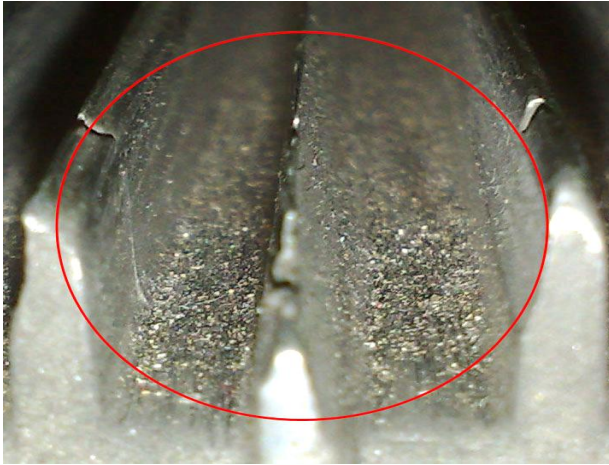
“Safety & Corporate Image Specialists”

Rib Re-Build™ Razor 260 is an integrated **In-situ** service that restores sharp ‘razor blades’ and damaged rib treads caused through metal objects becoming jammed in the comb plate. A Razor can also catch clothing, footwear, cords and shoe laces which may lead to personal injury.

Using a special metalized compound Escalator and Travelator ribs can be restored providing a safer public environment and returning the unit back into service within 8 hours.

To avoid tread plate channel, rib and coating abrasion, ESS recommend using **Tread Brush Cleaner™ 267**

Description	Information	Tread Plate Application
-------------	-------------	-------------------------

Patent System Accreditation Copyright Public Liability Applications	2008 CAS Approval 2640 ESS © 2011 20 Mil & Current Travelator/Escalator Metalized Compound Tread Rib Restoration Wet or Dry conditions After 8 Hours @ 20C Minor Odour < 1 Hour 12 Months, excludes impact and abrasion. 5 Years	
Application In-Situ Application Profile Pedestrian Traffic Pedestrian Access Environment Warranty Period		
Longevity Guide	5 Years	

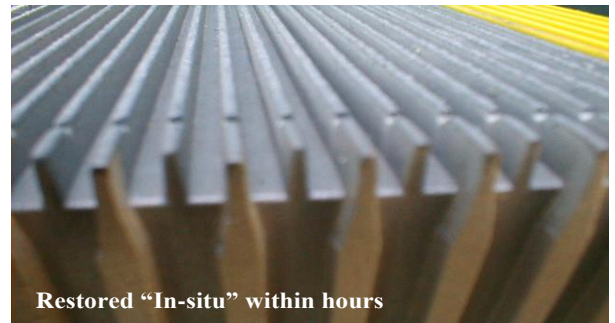
Management Assistance

Security Contact	Provide Mobile Number
Public Safety	Provide Scissor Barriers
Unit Operation	Provide Unit Key
Unit Treatment	Provide Pre-Cleaning
Unit Quotation	Provide Entry/Exit Length
Unit Cleaning	Use standard systems
Schedule Period	Most convenient Time

MAJOR BENEFITS

- Reduces Replacement Cost**
- Reduces Compensation Claims**
- Avoids Downtime & Inconvenience**
- Improves Pedestrian Safety**
- Maintains strength and rib profile**
- Maintains Corporate Image**

Disclaimer: The information given on this data sheet is based on many years experience and is correct to the best of our knowledge. Clients are requested to conduct their own trials to prove the acceptability of a product or service for their use. Please contact our Customer Service for any assistance.



www.escalator-safety.com

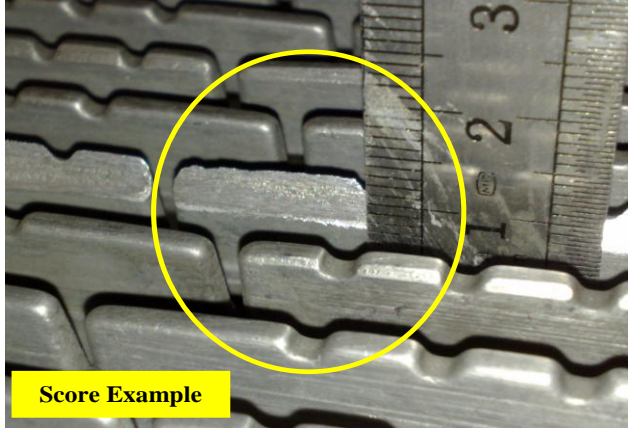


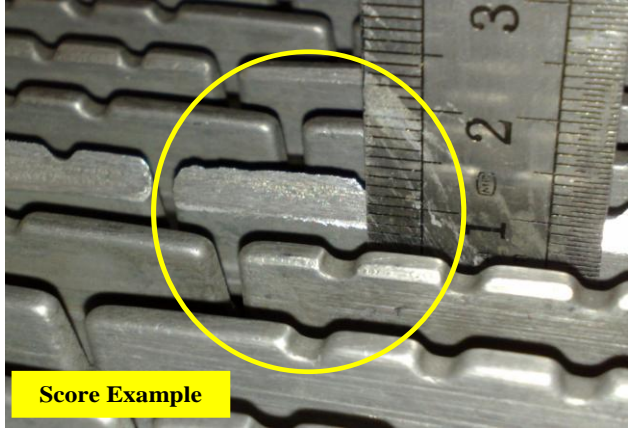
Rib Rebuild™ Score 261

“Safety & Corporate Image Specialists”

Rib Rebuild™ - Score 261 is an integrated **In-situ** service that repairs ‘scored’ and damaged rib treads caused through metal objects becoming jammed in the comb plate. A Score can also be a burred edge that can catch clothing, footwear, cords and shoe laces which may lead to personal injury. Using a special metalized compound Escalator and Travelator ribs can be restored providing a safer public environment and returning the unit back into service within 8 hours. To avoid tread plate channel, rib and coating abrasion, ESS recommend using **Tread Brush Cleaner™ 267**

Description	Information	Tread Plate Application
-------------	-------------	-------------------------

Patent System Accreditation Copyright Public Liability Applications Application In-Situ Application Profile Application Depth Pedestrian Access Environment Warranty Period	Patented 2009 CAS Approval 2640 ESS © 2006 20 Mil & Current Travelator/Escalator Metalized Compound Tread Rib Restoration Max. 5mm Angle or Flat After 8 Hours @ 20C Minor Odour < 1 Hour 12 Months, excluding impact and abrasion.	
---	---	---



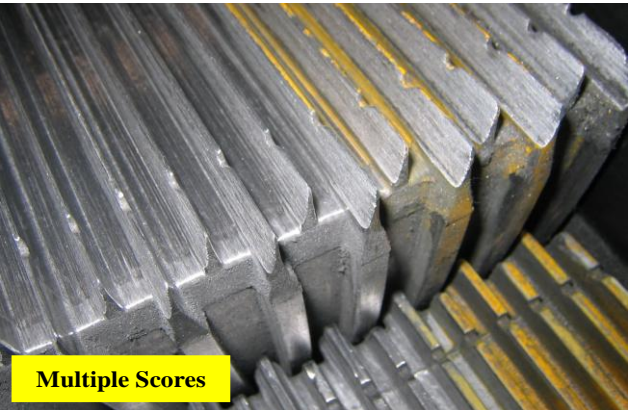
Score Example

Management Assistance

Security Contact	Provide Mobile Number
Public Safety	Provide Scissor Barriers
Unit Operation	Provide Unit Key
Unit Treatment	Provide Pre-Cleaning
Unit Quotation	Provide Entry/Exit Length
Schedule Period	Most convenient Time
Schedule Notice	14 days notice preferred

MAJOR BENEFITS
Reduces Replacement Cost
Reduces Compensation claims
Avoids Downtime/Inconvenience
Improves Pedestrian Safety
Maintains strength and rib profile
Maintains Corporate Image

Disclaimer: The information given on this data sheet is based on many years experience and is correct to the best of our knowledge. Clients are requested to conduct their own trials to prove the acceptability of a product or service for their use. Please contact our Customer Service for any assistance.



Multiple Scores

www.escalator-safety.com



Rib Rebuild™ Chip 258

“Safety & Corporate Image Specialists”

Rib Rebuild™ Chip 258 is an integrated system designed to rebuild broken or damaged rib treads caused through impact or objects snapping the rib profile making it unsafe or hazardous for public use. Using a molecular metal compound Escalator and Travelator damaged ribs can be restored “In-situ” and the unit returned back into service within eight hours.

To prevent tread plate channel and coating abrasion, ESS recommend using **Tread Brush Cleaner™ 267**

Description	Information	Applications
-------------	-------------	--------------

Accreditation	CAS Approval 2640
Copyright	ESS © 2005
Public Liability	20 Mil & Current
Application	Travelator/Escalator

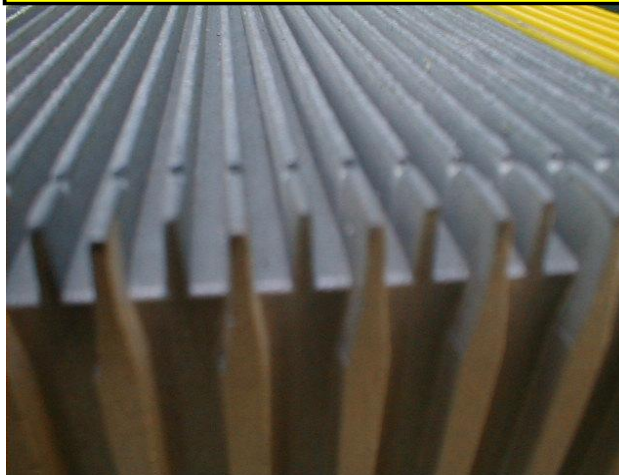
Application In-Situ	Metal Compound
Application Profile	Tread Rib Restoration
Pedestrian Traffic	Wet or Dry conditions
Pedestrian Access	After 4 Hours @ 20C
Working Environment	No Heat System
Warranty Period	12 Months, excludes impact and abrasion.

Chip Restoration	1 < > 50mm in length
	50-90mm in length



MAJOR BENEFITS

- Reduces Replacement Cost**
- Reduces Compensation claims**
- Avoids Downtime/Inconvenience**
- Strengthens Tread Plate**
- Improves Pedestrian Safety**
- Maintains Corporate Image**



Management Assistance

Security Contact	Provide Mobile Number
Public Safety	Provide Scissor Barriers
Unit Operation	Provide Unit Key
Unit Treatment	Provide Pre-Cleaning
Unit Quotation	Provide Damage Length
	ESS or Approved
Schedule Period	Most convenient Time
Schedule Notice	14 Days preferred

Disclaimer: The information given on this data sheet is based on many years experience and is correct to the best of our knowledge. Clients are requested to conduct their own trials to prove the acceptability of a product or service for their use. Please contact our Customer Service for any assistance.

www.escalator-safety.com



Rib Rebuild™ Edge 255

“Safety & Corporate Image Specialists”

Rib Rebuild™ Edge 255 is designed as an “Offsite” restoration service for the rebuilding of worn abraded tread plate edges due to misalignment on Escalator and Travelator plates. Applying a molecular metal compound avoids heat distortion and is ready for installation within eight hours.

Escalator and Travelator tread plates can be re-installed providing a safer public environment and returning unit back into service.

To avoid tread plate channel, rib and coating abrasion, ESS recommend using **Tread Brush Cleaner™ 267**

Description	Information	Tread Plate Application
-------------	-------------	-------------------------

**Patent System
Accreditation
Copyright
Public Liability
Applications**

**Patent 2009
CAS Approval 2640
ESS © 2008
20 Mil & Current
Travelator/Escalator**

Application Offsite
Application Profile
Application Depth
Abrasion Resistance
Cathodic Disbond.
Warranty Period

Metalized Compound
Tread Rib Edge Restoration
Max. 15° < 35mm
Taber. CS17, 55mm3
ASTM G8 Class B
12 Months, excluding
impact and abrasion.



Management Requirements

Unit Treatment	Provide Pre-Cleaning
Unit Quotation	Provide Tread Plates
Schedule Period	Most convenient Time
Schedule Notice	14 days notice preferred

Disclaimer: The information given on this data sheet is based on many years experience and is correct to the best of our knowledge. Clients are requested to conduct their own trials to prove the acceptability of a product or service for their use. Please contact our Customer Service for any assistance.

MAJOR BENEFITS

- Reduces Replacement Cost
- Reduces Compensation claims
- Avoids Downtime/Inconvenience
- Improves Pedestrian Safety
- Maintains strength and rib profile
- Eliminates Heat distortion

www.escalator-safety.com

Escalator Safety Services Pty Ltd Ph: **03 5978 6575** info@escalator-safety.com



Demarc Safety™ Lines 248

“Safety & Corporate Image Specialists”

Demarc Safety™ Lines 248 is an integrated environmentally friendly demarcation safety line service that is Non-Toxic, Non-Hazardous, Non-Flammable and Non-Tainting.

Process incorporates removal of lubricants, soils and flakey paint coatings prior to the application of a durable Polyurethane Laminate coating.

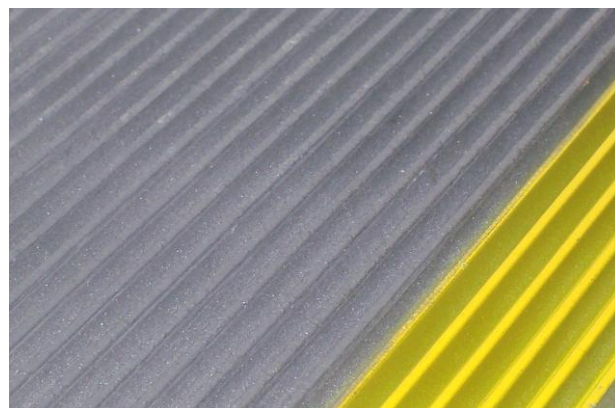
The “In-situ System” eliminates the **RISK** of contaminating RETAIL and FOOD courts.

To prevent tread plate and coating abrasion, ESS recommend using **Tread Brush Cleaner™ 267**

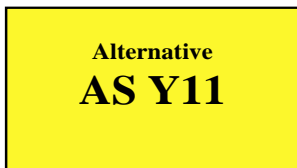
Description	Information	Applications
-------------	-------------	--------------

Accreditation
Public Liability
Copyright
Coating Type
Coating Properties
Coating Application

CAS Compliant 2640
20 Million & Current
© 2011
Polyurethane Laminate
Environmentally Friendly
In-situ Spray System



Colour Guide:



Requirements:

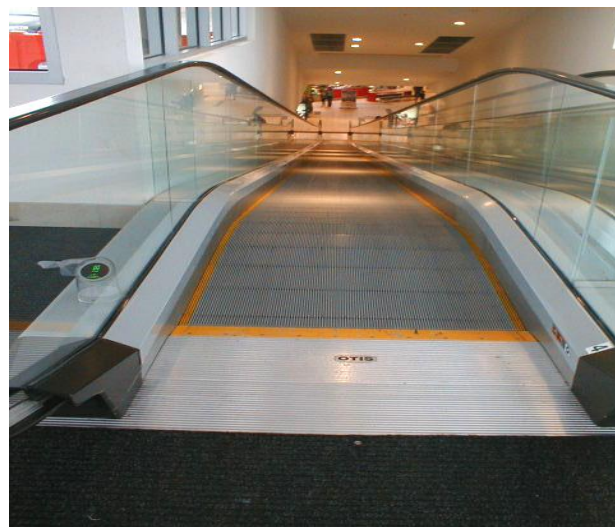
Security
Safety Barriers
Travelator Key
Application
Warranty Period

Centre Management:

Mobile Contact Number
Scissor type barriers
Stop/Start operations
After Trading Hours
12 Months *Excludes
impact & abrasion

Quotation
Schedule Notice

Provide Entry/Exit LM
14 Days notice preferred



Maintains Safety and Corporate Image

Disclaimer: The information given on this data sheet is based on many years experience and is correct to the best of our knowledge. Clients are requested to conduct their own trials to prove the acceptability of a product or service for their use. Please contact our Customer Service for any assistance.

www.escalator-safety.com

Escalator Safety Services Pty Ltd

Ph: **03 5978 6575**

info@escalator-safety.com



Demarc Safety™ Comb 250

“Safety & Corporate Image Specialists”

Demarc Safety™ Comb Plate 250 is an integrated system. It is a high build powder coating designed to resist foot traffic, shopping trolley wheel impact and cleaning systems to the comb plate. The finish provides pedestrian entry/exit awareness, high impact resistance, durability and ease of cleaning over conventional coating systems. New or existing Comb Plates are treated “Off-Site” for optimum durability & Impact.

Description	Information	Applications
-------------	-------------	--------------

Accreditation
Public Liability
Copyright
 Coating Type
 Coating Application

CAS Compliant 2640
20Mil & Current
© 2005
 Powder Coating
Off-Site Service

Requirements:
 Communication
 Warranty Period

 Quotation Guide
 Schedule Notice
 Transport Service

Centre Management:
 Mobile Contact Number
 12 Months, excludes impact & abrasion
 Provide LM Width
 14 > 30 Days preferred
 Pick-Up & Delivery



Comb Plate > Due to Impact

Color Guide:



Priority One SAFETY



Maintain Safety and Corporate Image

Disclaimer: The information given on this data sheet is based on many years experience and is correct to the best of our knowledge. Clients are requested to conduct their own trials to prove the acceptability of a product or service for their use. Please contact our Customer Service for any assistance.

www.escalator-safety.com