



“Building dreams, not just buildings”

**ABN**

**96 633 383 374**

**Post**

**PO Box 89, Banksia, NSW, 2216**

**Phone**

**0405 929 653**

**Email**

**[info@conineering.com.au](mailto:info@conineering.com.au)**

**Web**

**[www.conineering.com.au](http://www.conineering.com.au)**



**ENGINEERS  
AUSTRALIA**

## **Introduction**

Congineering welcomes this opportunity to present an EOI to potential partners and customers. Our approach within the engineering industry has always been to achieve the highest standard, never compromising our integrity and values, be as cost effective as possible and be proactive to in ensuring we fulfil every need of our clients.

In a time of fierce competition Congineering will rise above by giving our customers peace of mind through our capability of performing to their needs and wants. Congineering has the expertise and resources to ensure that we meet the engineering needs of our customers in efficiency, functionality and quality assurance.

## **The Congineering difference**

As an engineering firm that is motivated, trustworthy and dedicated we listen and adjust to your needs which allows us to give you the quality you want and deserve.

*“Building dreams, not just buildings.”*

Aiming to be one of Australia’s leading engineering firms by building a reputation for our company to stand out within the industry we will go that extra mile for our customers to ensure they receive efficient service at the highest standard.

## Our expertise

We understand that most projects can be a large investment and you need to know you will be looked after to have your vision realized. To ensure this happens from the very start up until the very last phase of your project Congineering are there with you.

Your needs and satisfaction are the most important factors of any project we undertake with you. We guarantee the highest quality at the best price.

### Structural engineering design and documentation

**Structural design is the backbone of a project** and what gives any structure its ability to perform satisfactorily throughout its intended design life. At Congineering we have developed a thorough approach towards achieving the most optimized solution for the Structural Design of our projects.

From conceptual design to construction, our experienced engineers will provide you with options and recommendations to ensure a tailored and cost-effective Structural Design outcome complying with current codes and Australian Standards.

This includes all types of proposed works in residential, industrial and commercial, such as:

- New builds
- Alterations and additions
- Duplexes
- Townhouses
- Apartment blocks
- Factories
- Warehouses
- Offices
- Childcare centres

### Remedial engineering design and documentation

**In the field of building repairs** our team of structural engineers and project managers have extensive experience in identifying, measuring and advising the repair process and methodology. We provide a complete consulting service from initial diagnostic inspection through to completion of repairs. This includes project management services and contract administration. Our aim is to provide an accurate diagnostic report followed by an economical repair solution with longevity to enhance and value add to previously distressed buildings.

In achieving, this we are mindful of maintaining good working relationships with the team of Strata Managers, Owners and Contractors. Good communication and regular update of progress and costs combined with critical stage inspections of the work in progress has resulted in many successful building repairs.

### Civil/Stormwater engineering design and documentation

**Civil & Stormwater engineering and design is a core service within Congineering.** Our civil team offers a full range of civil engineering expertise including subdivision design, roads & stormwater design, engineering reports, flood modelling, due diligence, earthworks, DA design and construction documentation.

Our civil team are geared to deliver integrated and complaint civil engineering solutions for developers, local government and utilities buildings.

## Past projects

The Congineering team has vast experience in the field of engineering, with project sizes ranging from minor alterations and additions to high rise residential projects.

Some examples of previous projects that the team members of Congineering have been involved in are as follows.

*Project name:* **Maison**

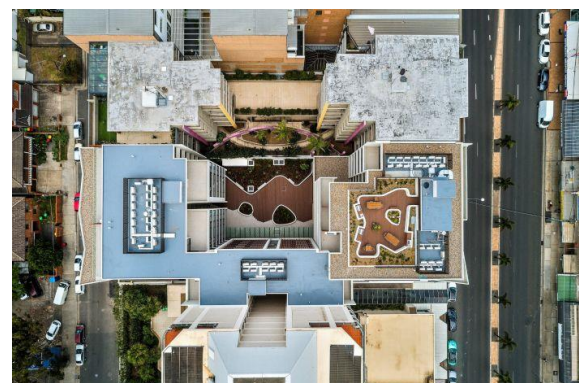
*Address:* 180-188 Maroubra Rd, Maroubra

*Client:* Aoyan Property Group (AUST) Pty Ltd

*Architect:* Marchese Partners Architects

*Value:* \$56.3 Million

*Project summary:* 57 residential apartments, 3 level basement and 3 retail shops.





*Project name:* **Everton**

*Address:* 19-25 Everton Rd, Strathfield

*Client:* Anne Miehs

*Architect:* Bennett Murada Architects

*Value:* \$30 Million

*Project summary:* Ten-level building with 70 residential units, with two levels of basement parking, one retail space and one commercial space.



*Project name:* **Altessa 888**

*Address:* 870-898 Pacific Highway, Gordon

*Client:* Aoyuan International

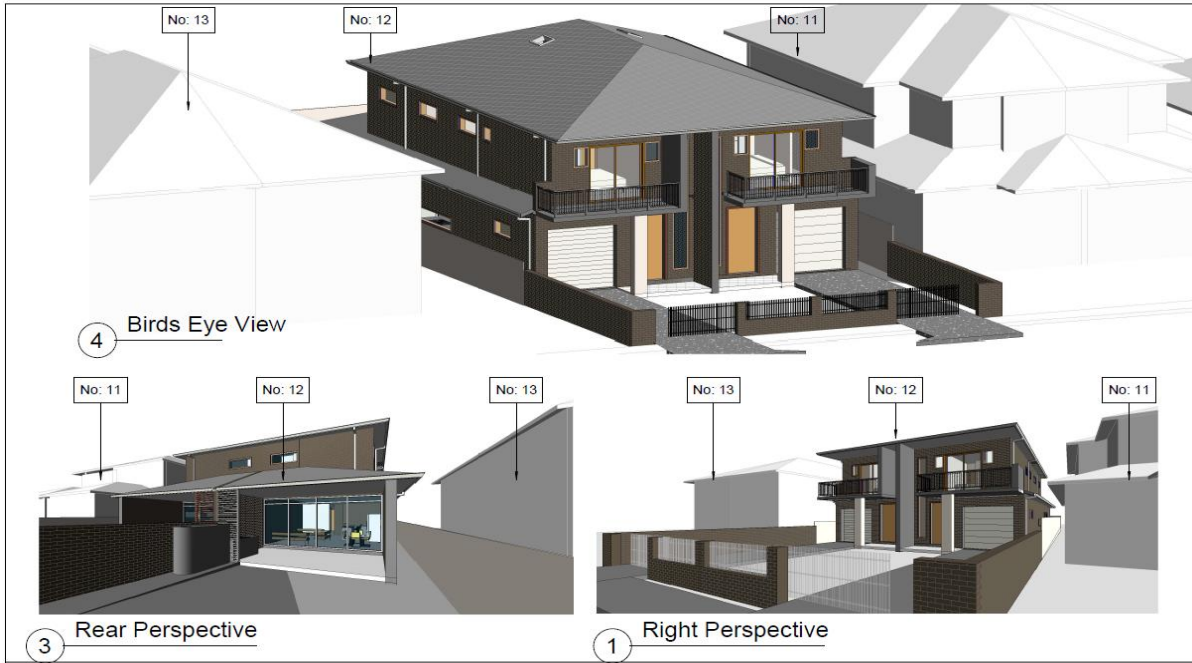
*Architect:* nettletontribe

*Value:* \$58 Million

*Project summary:* Three buildings with 144 residential units, with two levels of basement parking and seven retail spaces.



*Project summary:* **Residential Duplex**  
*Address:* 12 Brewer st, Concord  
*Client:* Private occupant  
*Architect:* TNArchitects



*Project type:* **Extension of existing residence**  
*Address:* 44 Kingsland rd sth, Bexley  
*Client:* Private occupant  
*Architect:* PlanIt3d

