

## New Projects

A new start-up needs to be approached early (project definition stage), to realize significant cost savings Automation can offer.



**EEHA AUTOMATION**  
ELECTRICAL ENGINEERING SERVICES

### Project Phase

1. Know what you want. Identify KPIs for the Mines Performance.
2. Define what you want. Produce Preferred Equipment Lists, Typical Electrical Drawings, Device Naming Conventions, Tag Naming Conventions, PLC Standards, SCADA Standards, Network Standards, Reporting Specifications and Example Libraries.
3. Distribute what you want. Include all of this Documentation in the Tendering Process.
4. Secure what you want. Build in Penalties for non-conformance into Vendor Contracts.
5. Manage what you want. Manage the FAT Testing and SAT Testing Process.
6. Enforce what you want. Hold vendors accountable for their non-conformances.
7. Follow up on the solution. After Commissioning is complete spend the time to optimise the system and seek performance gains.

### The proactive approach to Automation has a multitude of benefits.

- Reduced diversity of Equipment (Less Training, Maintenance and Spare Parts are required)
- Significantly Improved Consistency (Fault Finding is dramatically improved, Training is more specialised and effective; Consequently there is less downtime)
- Re-Work is dramatically reduced. (A direct cost saving)

Unfortunately Automation is often consulted too late and a more reactive approach is taken. Each of these points highlight the necessity to collaborate with an experienced System Integrator. In order to deliver the true value of Automation, a company must start with "the end in mind".

EEHA Automation offers a variety of Automation Services targeted to meet the needs of the Mining & Utility Sectors.

Our core focus is on positive client outcomes.

- ✓ We deliver Redundant, Scalable, and Consistent Solutions.
- ✓ We create Standards, Perform Audits and Support Existing Operations.
- ✓ We keep things Simple; providing Documentation and Training to Clients. Allowing your staff to maintain your Systems Internally.
- ✓ We build Reporting Structures into our systems from the beginning, drastically reducing the complexity of high level reporting structures later.
- ✓ We reverse engineer and integrate products to produce a single Site Wide Interface.
- ✓ We offer open and transparent Quotations, encourage Feedback and Follow-up on our Solutions.
- ✓ Our continued success lies in staying true to these values.

Expert System Integrators in  
PLC, SCADA, HMI, Networking,  
and Reporting Services



### Contact Us

- 📍 PO Box 1854, Emerald, 4720
- ☎ 0458 911 522
- ✉ sales@eehaa.com.au
- 🌐 www.eehaa.com.au

☎ 0458 911 522  
🌐 www.eehaa.com.au

# Greenfield JOBS

## New Sites Capability Statement

In today's world equipment is more complex and automated than ever before. This complexity leads to numerous specialist vendors each producing a single component of the overall mine operation. As a site wide systems integrator we take care of the Big Picture; driving consistency for your site throughout.

# Brownfield JOBS

## Existing Sites Capability Statement

It can be challenging to determine if you are prepared for the worst before it actually happens. We offer an Auditing process for Brownfield Sites that captures whether good practices exist and are being adhered to. Where there is room for improvement, we provide feedback and cost benefit analysis along with Action Plans to remedy.

## We offer the following services

### Site Architecture Design (Allowing for redundancy and scalability)

- Network Design
- Server Room Design
- System Design
- Hardware Design

### Development of Specifications

- Device/Tag Naming Conventions
- Preferred Equipment Lists. (Hardware and Software)
- PLC Functional Specification.
- SCADA Functional Specification.
- HMI Functional Specification.
- Network Functional Specification.
- Reporting Services Functional Specification.

### Development of Libraries & Examples (Object Orientated Approach for Re-use)

- PLC, SCADA, HMI, Documentation, etc...

### Information Technology Integration

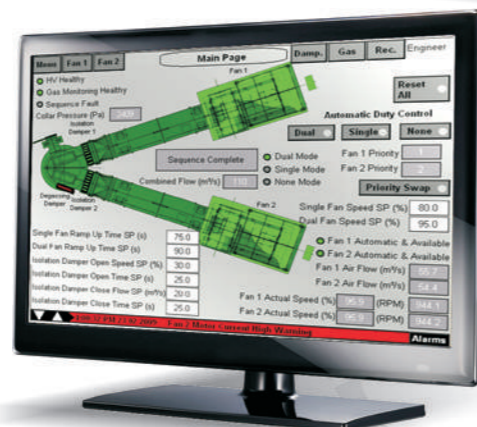
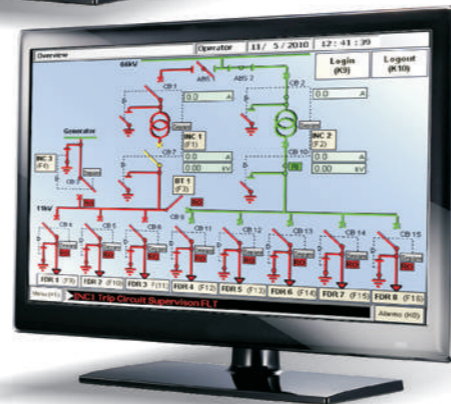
- Domain Setup, PC/PLC Security, PC Images, Backups, Change Management, Historian

### Management of Commissioning Activities

- Production of SAT and FAT Documentation for Vendor accountability

### Information Management

- Storage system for Manuals, Drawings, Software, Change Management, Programs



## We offer the following services

<b>Auditing</b>	<b>Disaster Recovery Plans</b>	<b>Training (Low Level and High Level)</b>	<b>Product Upgrades</b>	<b>Coding</b>	<b>PC Services</b>	<b>Support</b>
<ul style="list-style-type: none"> <li>→ Security</li> <li>→ Standards Compliance</li> <li>→ Change Management</li> <li>→ Procedures</li> <li>→ Scheduled Tasks</li> </ul>	<ul style="list-style-type: none"> <li>→ Backups</li> <li>→ Spare Parts Setup</li> </ul>	<ul style="list-style-type: none"> <li>→ SCADA / HMI / PLC Programming</li> <li>→ Fault Finding</li> </ul>	<ul style="list-style-type: none"> <li>→ SCADA/HMI/PLC Upgrades</li> </ul>	<ul style="list-style-type: none"> <li>→ Cicode</li> <li>→ VB</li> <li>→ Batch Files</li> <li>→ Database/SQL</li> </ul>	<ul style="list-style-type: none"> <li>→ Windows Updates</li> <li>→ Antivirus</li> <li>→ PC Rebuilds</li> <li>→ Domain Management</li> </ul>	<ul style="list-style-type: none"> <li>→ Off site</li> <li>→ On site</li> <li>→ Remote Connection</li> </ul>

### EEHA Automation's 5 Year Plan

EEHA Automation is currently experiencing a growth phase. This is on the back of meeting and exceeding clients' expectations.

The next 5 years will see a number of industry challenges. As new technology emerges, the breadth of support required will grow. Upgrades will be required as Windows XP is phased out and the prevalence of 64bit Operating Systems starts to take over.

### Our Target Growth areas are:

- Enhancing existing operations;
- Providing effective PLC, SCADA and PC Upgrade paths;
- Collaborating Vendor Projects into Site Wide Systems;
- Working with Clients to provide effective Reporting Solutions;
- Leveraging diverse information distribution methods. (Tablets, Phones, Internet, SMS, RSS News Feeds, Email).

## About company

EEHA Automation is a Site Wide Systems Integrator, providing Automation and Electrical Engineering Services to the Mining & Utility Sector.

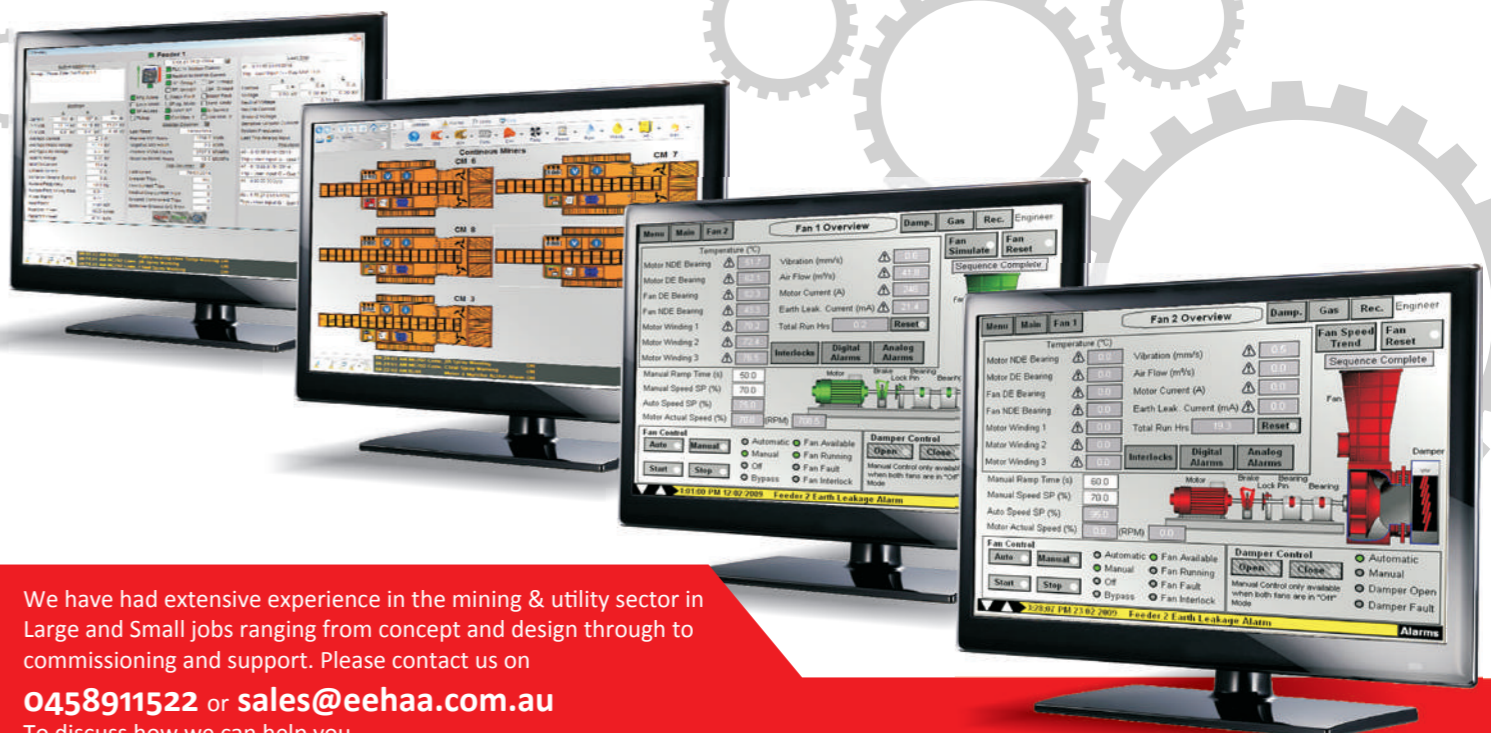
We design, create and maintain PLC, SCADA, HMI, Reporting, Computer and Networking Systems.

We provide custom solutions to get the maximum performance from your equipment.

## Our core services include:

SMS & Email Notifications, Custom Targeted Reporting, Disaster Recovery Plans, Security Audits, Backup Schedules, Training Packages, Software and Hardware Design, Network Architecture Design, Alarm Management, Camera Design, Control Room Design, Change Management, and IT Design, Management and Rollout.

EEHA Services, (EEHA Automation's Sister Company) can also provide all manner of Project Management Services. Acting as a Clients Representative, delivering Project Identification, BFS, FEED, Equipment Specifications and Selection through to EPCM Management and Site Statutory Appointment.



We have had extensive experience in the mining & utility sector in Large and Small jobs ranging from concept and design through to commissioning and support. Please contact us on

**0458911522** or **sales@eeha.com.au**

To discuss how we can help you.