

With a wide range of colours and finishes including six striking metallics and COLORBOND® Coolmax® steel you have a contemporary palette to complement any building design.

Design as flexible as your imagination

COLORBOND® steel provides the design flexibility to offer endless possibilities, including low roof pitches and curves. It's lightweight and offers excellent spanning capabilities that assist to minimise structural elements in roofing and walling.

Thermal efficiency saves cooling energy

In moderate to hot climates, compared to low solar reflectance roofing materials of similar colour, roofing made from COLORBOND® steel with Thermatech® can reduce annual cooling energy consumption by up to 20%[‡].

Take the heat off cooling costs

COLORBOND® Coolmax® steel in the colour Whitehaven® could reduce the annual cooling energy costs of your building by up to 7.5%[‡] compared to COLORBOND® steel in Surfmist®.

Made for Australia

With a baked-on paint finish, COLORBOND® steel resists chipping,

peeling and cracking to deliver durability with low maintenance. Non-combustible, termite resistant, weather tight[§] and secure, it protects your building and contents.

Tested and proven for over 45 years

COLORBOND® steel is one of the world's most advanced building materials. More than 45 years of testing and development ensures COLORBOND® steel is made tougher for our harsh conditions.

Warranty

BlueScope Steel offers a range of warranties* for COLORBOND® steel used in a range of different applications. Activate or apply for your pre-approved warranty at bluescopesteel.com.au/warranties

Lightweight and strong future

Strong and lightweight, steel is well positioned to meet current and emerging environmental and building design regulations and guidelines.



To determine the most suitable material for your project please contact your supplier or visit:

steelselect.com

For design and specification tools

bluescopesteel.com.au/warranties

To activate or apply for your warranty*



[‡]Depending on level of insulation, building shape and function. Average reduction is about 5%. [‡]COLORBOND® Coolmax® steel in Whitehaven® has a 9% higher solar reflectance than COLORBOND® steel in Surfmist®. [§]When installed to manufacturers specifications. *Warranty subject to application and eligibility criteria. For full terms and conditions and to determine the eligibility of your building for the warranty visit www.bluescopesteel.com.au/warranties or call BlueScope Steel on 1800 022 999.

SA = The classification of colours based on solar absorptance measured in accordance with ASTM E 903-96, Standard test method for solar absorptance, reflectance and transmittance of materials using integrating spheres.

[^]The COLORBOND® steel colour swatches and images shown in this brochure have been reproduced to represent actual product colours as accurately as possible. However, we recommend checking your chosen colour against an actual sample of the product before purchasing, as varying light conditions and limitations of the printing process may affect colour tones. To determine the most suitable material for your project, please contact your supplier or see www.colorbond.com.

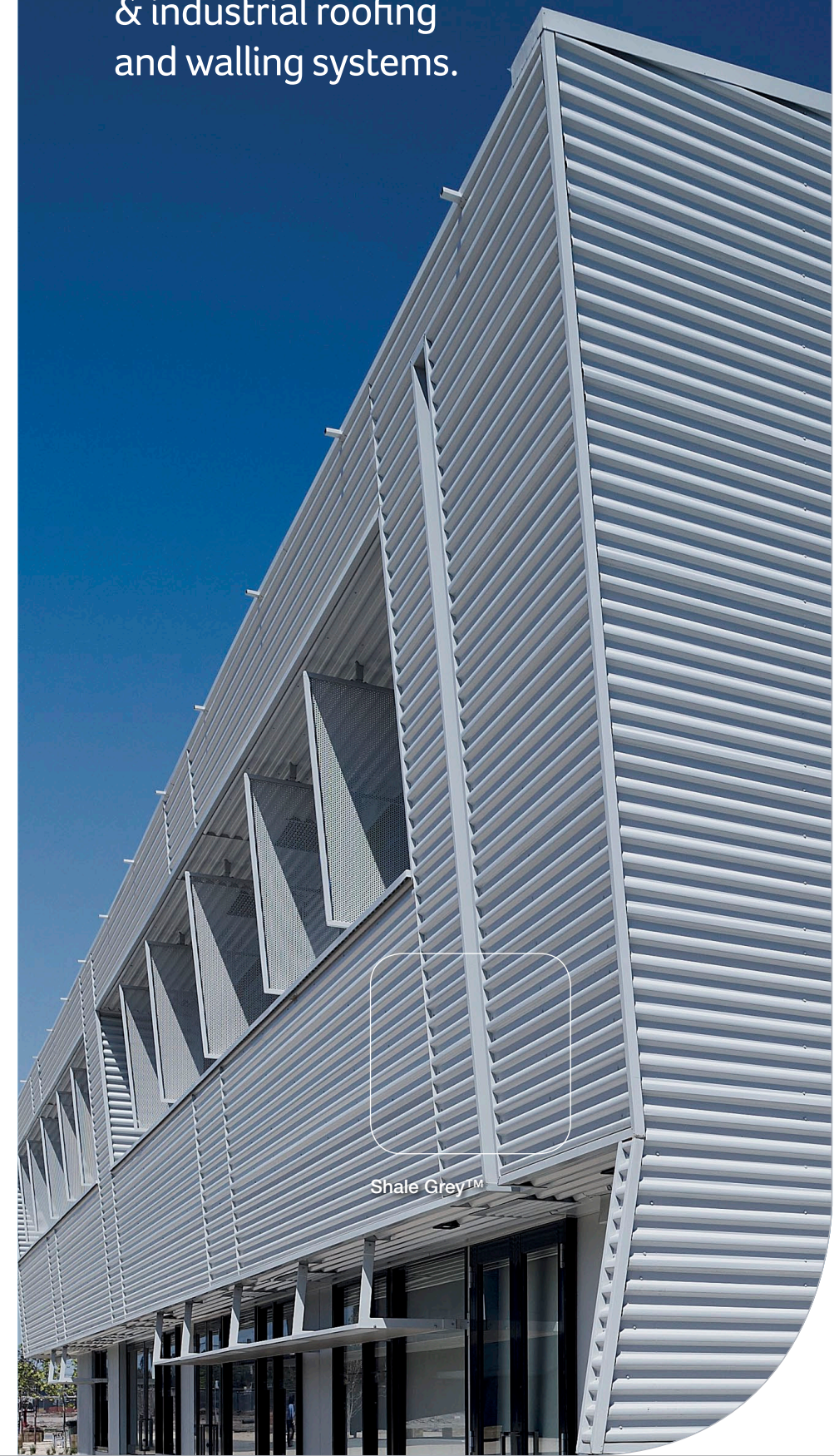
COLORBOND®, Thermatech®, BlueScope and ® colour names are registered trade marks and ™ colour names are trade marks of BlueScope Steel Limited. © 2012 BlueScope Steel Limited ABN 16 000 011 058. All rights reserved.



9 320075 069308

Commercial colours

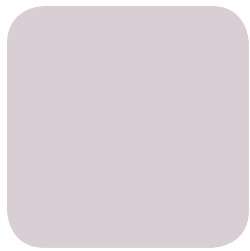
Colours for commercial & industrial roofing and walling systems.





Walling colours – Axis® and Conservatory®

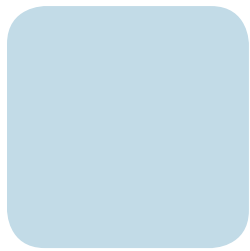
COLORBOND® Metallic steel range^



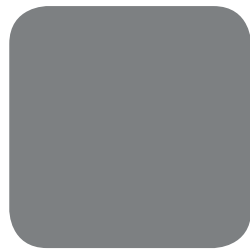
Axis®
SA = 0.53



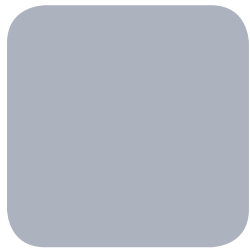
Citi®
SA = 0.48



Skybridge®
SA = 0.53



Facade®
SA = 0.79



Conservatory®
SA = 0.53



Cortex®
SA = 0.59

COLORBOND® Coolmax® steel^



Whitehaven®
SA = 0.23 (The lowest Solar Absorptance value in the COLORBOND® steel range.)

COLORBOND® steel standard colour range^



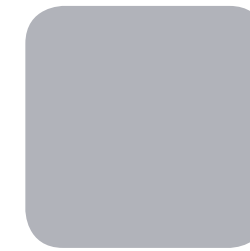
Evening Haze®
SA = 0.43



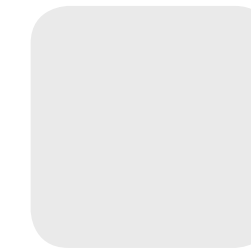
Classic Cream™
SA = 0.32



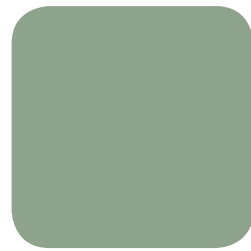
Shale Grey™
SA = 0.43



Dune® ††
SA = 0.47



Surfmist® ††
SA = 0.32



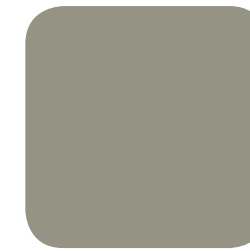
Pale Eucalypt®
SA = 0.60



Paperbark®
SA = 0.42



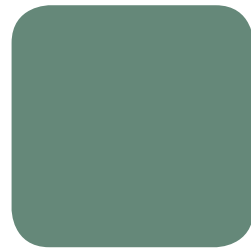
Sandbank®
SA = 0.46



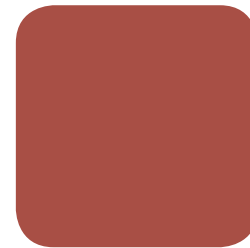
Bushland®
SA = 0.62



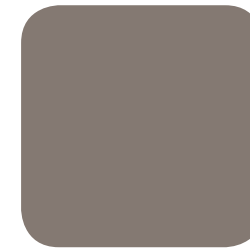
Windspray® ††
SA = 0.58



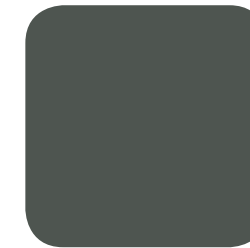
Wilderness®
SA = 0.65



Headland®
SA = 0.63



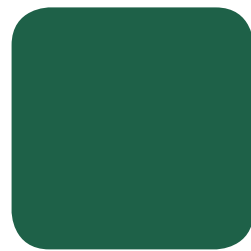
Jasper®
SA = 0.68



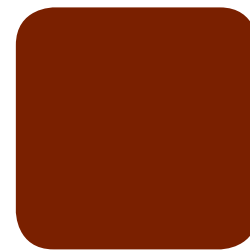
Woodland Grey® ††
SA = 0.71



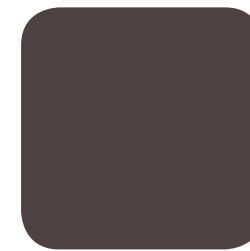
Ironstone®
SA = 0.74



Cottage Green®
SA = 0.75



Manor Red®
SA = 0.69



Loft® ††
SA = 0.71



Monument®
SA = 0.73



Deep Ocean® ††
SA = 0.75

Legend

† also available in COLORBOND® Stainless steel for Severe Coastal and Industrial environments. Thermatech® is not available in COLORBOND® Stainless steel.

** also available in COLORBOND® Ultra steel for Coastal and Industrial areas.

SA = Solar Absorptance.