



*Proudly Present **The Valentine**  
(Just 7 Days Construction time)*

Contact Person: Steve Murray  
Mob: 0413 007 470  
Email: steve.murray@anembohomes.com.au

**Product Introduction**

**Name:** The Valentine

**Specifications:** 10500mm x 5550mm **Area:** 60m<sup>2</sup> **Usage:** Residence / office / Granny Flat

**Package Size:** 5910mm x 2200mm x 2520mm **Weight:** 3800kg

**Description:**

This is the new 2016 Model Folding House.

The structure is main Steel and Insulated Panels for high Energy Saving.

All the steel structure is hot galvanized Dipped and welded with protection of CO<sub>2</sub>.

All The Flashings are Stainless Steel and Rust Proof.

The whole house can be Fully assembled in 7 days.

**Product Ideas :**

The House Floor Plan Layout Can be Designed to suit Customer's Requirements

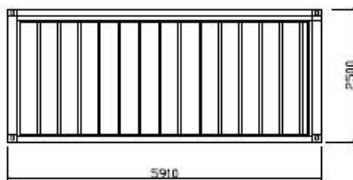
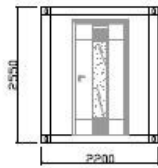
1. The House is easily transported in a Container or on a Tray truck.
2. Is Available in 60m<sup>2</sup>, 90m<sup>2</sup> and 120m<sup>2</sup>.
3. Increase the Value of your Land almost anywhere.
4. At Least 25% Return on Investment as a Rental Property - Based on Rental income of \$1000 Per Month.

## Detail Introduction:

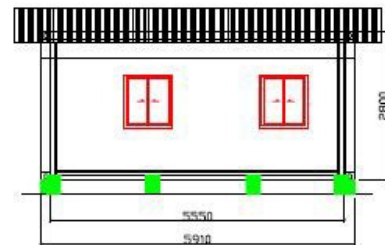
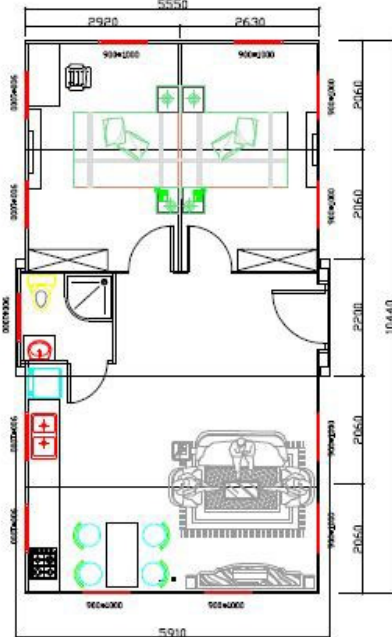
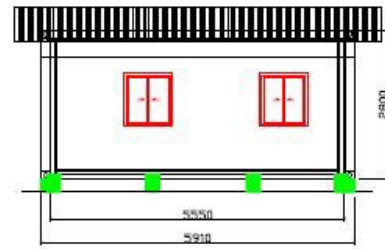
## Drawing:

20ft extendable cabin  
package specification: 6910\*2200\*2500

Launched an area: 60m<sup>2</sup>



This is the package size for the folded house as the same as the loading size 2 into 40HQ.



## Inside Plan:

2 bedrooms, 1 bathroom, 1 open kitchen, 1 large living room, 12 aluminium alloy windows, 1 small bathroom window and 1 fireproof security Front door.

**Inside Height:** 2400mm

**Top Roof Height:** 4300mm



For more details please feel free to contact us. We offer detailed installation drawings after you place your order.





Aluminium and Zinc Coated Steel Sheet



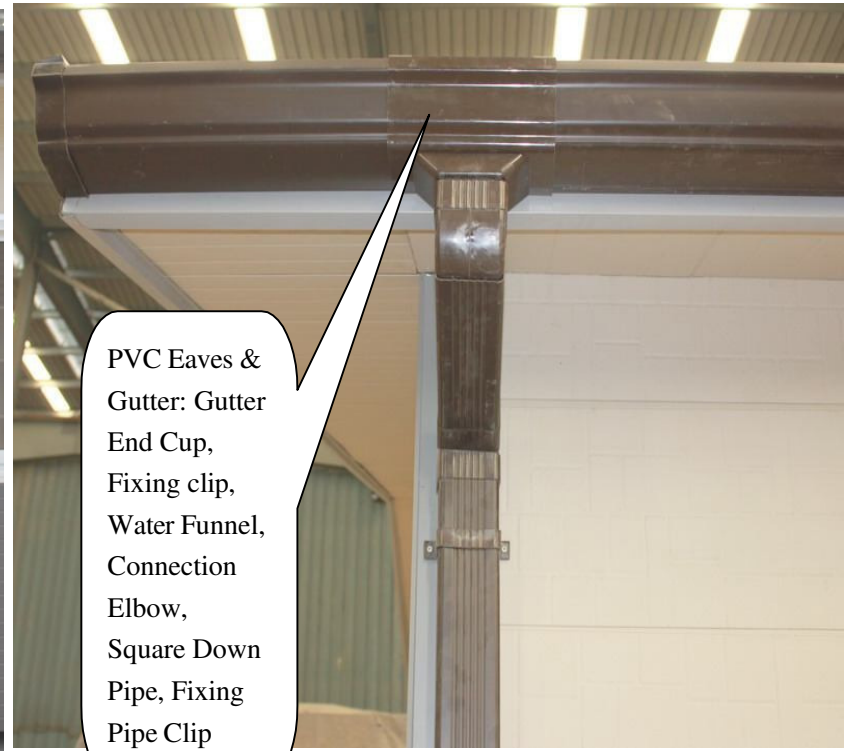
0.5mm Color Steel Plate

0.5mm Corrugated Sheet Roofing



800 x 600mm  
Aluminium  
Window(Bathroom)

Back view of the cabin. 4 aluminium alloy sliding windows both at front and back. Each window 1000 x 900mm



PVC Eaves & Gutter: Gutter End Cup, Fixing clip, Water Funnel, Connection Elbow, Square Down Pipe, Fixing Pipe Clip



**Exterior Wall Decoration:** Colour Coated Embossed Decoration Plate

**Thickness:** 15mm

**Outside Surface:** 0.4mm Aluminium and Zinc Coated Plate.

**Insulation:** PU

**Inside Surface:** Aluminum Foil

The decoration plate colour and pattern are both optional. Please refer to the detail documents of exterior wallboards.



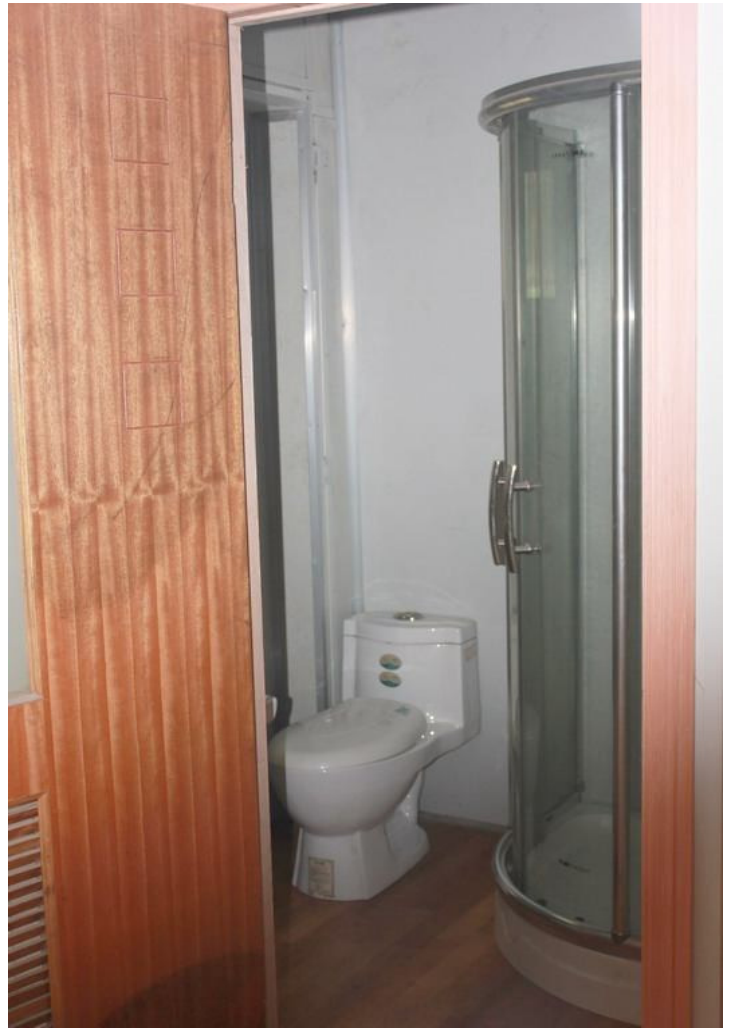
Aluminium Shutter Window: 800 x 600mm.



Eave ceiling plate is different using wall decoration plate.



Aluminium Wall Corner Protection.



Shower, toilet and basin included.



Large Open Plan Living Area with PVC Skirting Boards and Cornice.





Living Room



Bedroom-1



Bedroom-2

