

# heritage water tanks

Steel Water Tanks from 55,000L to 375,000L



Now you can have your own fresh, clean water supply for your family with a corrugated or streamline profile



## The tank with the gutter option

Choose from Corrugated or Streamline Profile

[heritagetanks.com.au](http://heritagetanks.com.au) | Freecall 1800 115 552

Heritage Tanks Australia Pty Ltd ABN 93 101 088 582



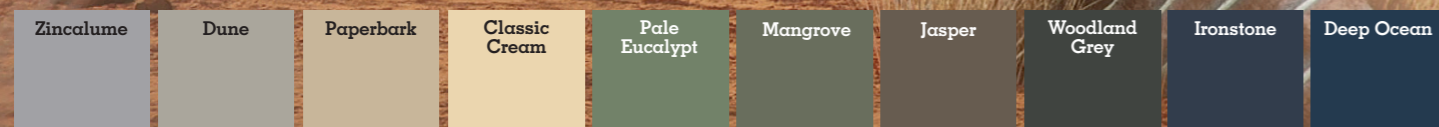


# Built for Australian conditions with a 20 year pro rata warranty

Conditions may apply



## Available Colorbond®



## TANK WALLS

Heritage Water Tanks have an attractive, strong, durable and engineer certified steel wall, with the option of either a Corrugated or Streamline profile. Our tank walls are made of BlueScope ZINCALUME® or COLORBOND® steel which is a minimum of one millimetre thick. This is significantly thicker than most other tank manufacturers, which means that your tank will outlast other tanks. Our tank walls can also be powder coated to suit alternate colour requirements.

## LINERS

Heritage Water Tanks Arma liner weighs in at 700gm<sup>2</sup>, making it one of the heaviest liners in the Water Tank Industry. Extra weight means extra density. Independent testing proves that our Arma liner is stronger and will last longer than our closest competitors.

## INDEPENDENT TEST RESULTS

- > Arma Liner (700gsm)
- > Minimum tensile properties
- > Tensile properties (ASTM D 7003)
- > Maximum strength (kN/m) 52
- > Break strength (N) 1312
- > Puncture resistance (ASTM D 4833)
- > Puncture strength (N) 1025
- > Seam strength (ASTM D 6392)
- > Shear strength (N/mm) 57

'ARMA for the freshest, healthiest water storage'

## ROOF

Heritage Water Tanks have an attractive dome roof with a unique engineer certified truss design. All trusses are fully welded and made from hot dipped Galvanised Steel. This gives you peace of mind in the strength of the overall structure. The trusses are then covered with a corrugated ZINCALUME® or COLORBOND® roof sheet.

## Corrugated or Streamline

## COMPONENTS

All components fitted to a Heritage Water Tank are of the highest quality. Including metal ball valve, outlets, overflow fittings. We use a 370mm wide mesh leaf catching inlet assembly. The manhole is constructed from durable BlueScope Steel and is lockable.

## MINING AND INDUSTRIAL

All Heritage Water Tanks are engineer designed and certified, giving us the advantage of manufacturing a superior tank to suit all your needs, conditions and requirements. Heritage Water tanks build tanks for mining and commercial purposes, from 20,000L up to 2ML. We have supplied and installed water tanks for some of the largest companies in Australia.

## VERSATILITY

By virtue of the uncomplicated nature of the structure, the onsite assembly process and ease of transportation, our tanks are exceptionally versatile. Our tanks are particularly suitable for reliable water storage in the fields of agriculture, viticulture, forestry, mining and construction, as well as domestic use.

## ENGINEER CERTIFICATION

All Heritage Water Tanks comply with the following Australian Standards:

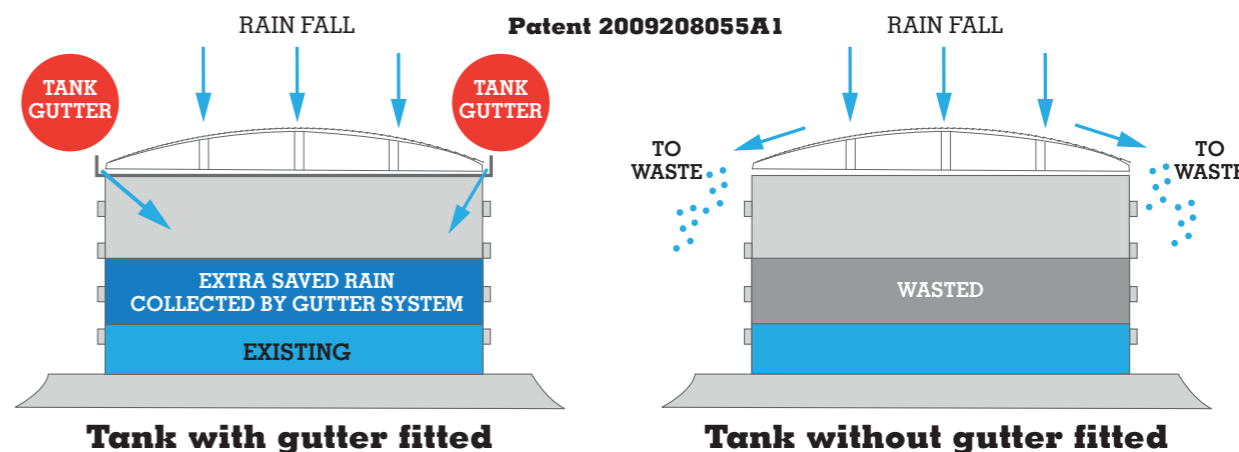
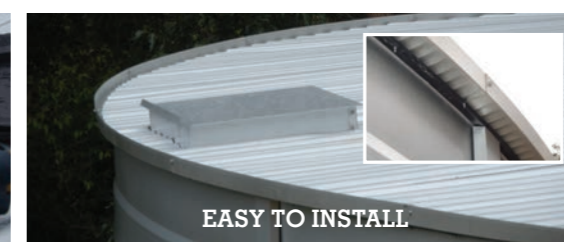
- > AS/NZS 1170.0 General Principles
- > AS/NZS 1170.1 Permanent, imposed & other Actions
- > AS/NZ 1170.2 Wind actions
- > AS 1170.4 Earthquake Loads
- > AS 4100 Steel Structures
- > AS 4020 Potable Water



# Rain Water Harvesting (option). Finally - the wait is over!

Heritage Water Tanks Australia Pty Ltd are pleased to announce the all new gutter system for circular rain water tanks. The Australian designed and manufactured gutter, using BlueScope ZINCALUME® or COLORBOND® steel, enables you to collect 100% of the rain from your tank roof, without compromising the capacity of your tank. Instead of all of the precious rain water from your tank roof going to waste, you can now harvest this precious commodity directly into your water tank.

How? With the gutter system fitted to your tank, all the rain from your tank roof is directly diverted into your tank via the gutter system. The rain runs down the roof and into the gutter system, which diverts the rain water under the corrugated profile roof and into the water tank. (see diagram) The circular tank gutter system can be fitted onto your Heritage Water Tank when your new tank is installed. The gutter can also be fitted to all existing steel tanks with a profiled roof. This can be done by a plumber, tank installer or as a D.I.Y. kit



heritagetanks.com.au | Freecall 1800 115 552







## Tank sizes, capacities & sand pad requirements (Capacities rounded off)

STREAMLINE	HEIGHT (M)	CORRUGATED	HEIGHT (M)	DIAMETER (M)	LITRES	GALLONS	SAND PAD DIA. (M)
HGT55	2.31	CT12	2.27	5.49	55,000	12,000	7.50
HGT90	2.31	CT20	2.27	7.06	90,000	20,000	9.10
HGT110	2.31	CT25	2.27	7.84	110,000	25,000	9.90
HGT135	2.31	CT30	2.27	8.63	135,000	30,000	10.70
HGT160	2.31	CT35	2.27	9.41	160,000	35,000	11.50
HGT220	2.31	CT48	2.27	10.99	215,000	48,000	13.00
HGT250	2.31	CT54	2.27	11.77	250,000	55,000	13.80
HGT285	2.31	CT60	2.27	12.55	280,000	60,000	14.60
HGT375	3.45	N/A	N/A	11.77	375,000	80,000	15.80

The information in the table above is approximate and may vary slightly.



370mm Leaf Basket



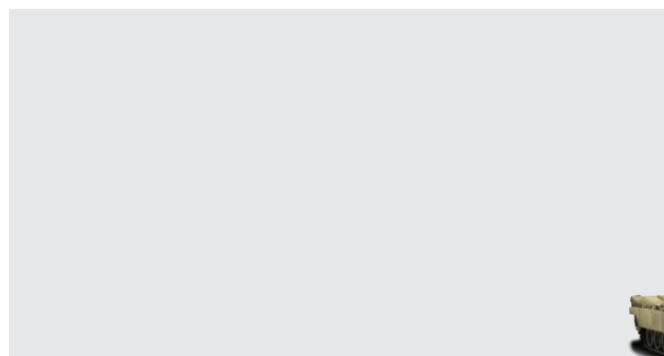
Overflow Pipe



Access Hatch



Bottom Outlet / Ball Valve



Freecall 1800 115 552

[info@heritagetanks.com.au](mailto:info@heritagetanks.com.au) | [heritagetanks.com.au](http://heritagetanks.com.au)

Heritage Tanks Australia Pty Ltd ABN 93 101 088 582



The COLORBOND® steel colours shown have been reproduced to represent actual product colours as accurately as possible. However, we recommend checking your chosen colour against an actual sample of the product before purchasing as varying light conditions and imitations of the printing process may affect colour tones. COLORBOND®, BlueScope and © colour names are registered trade marks of BlueScope Steel Limited.™ colour names are trade marks of BlueScope Steel Limited.