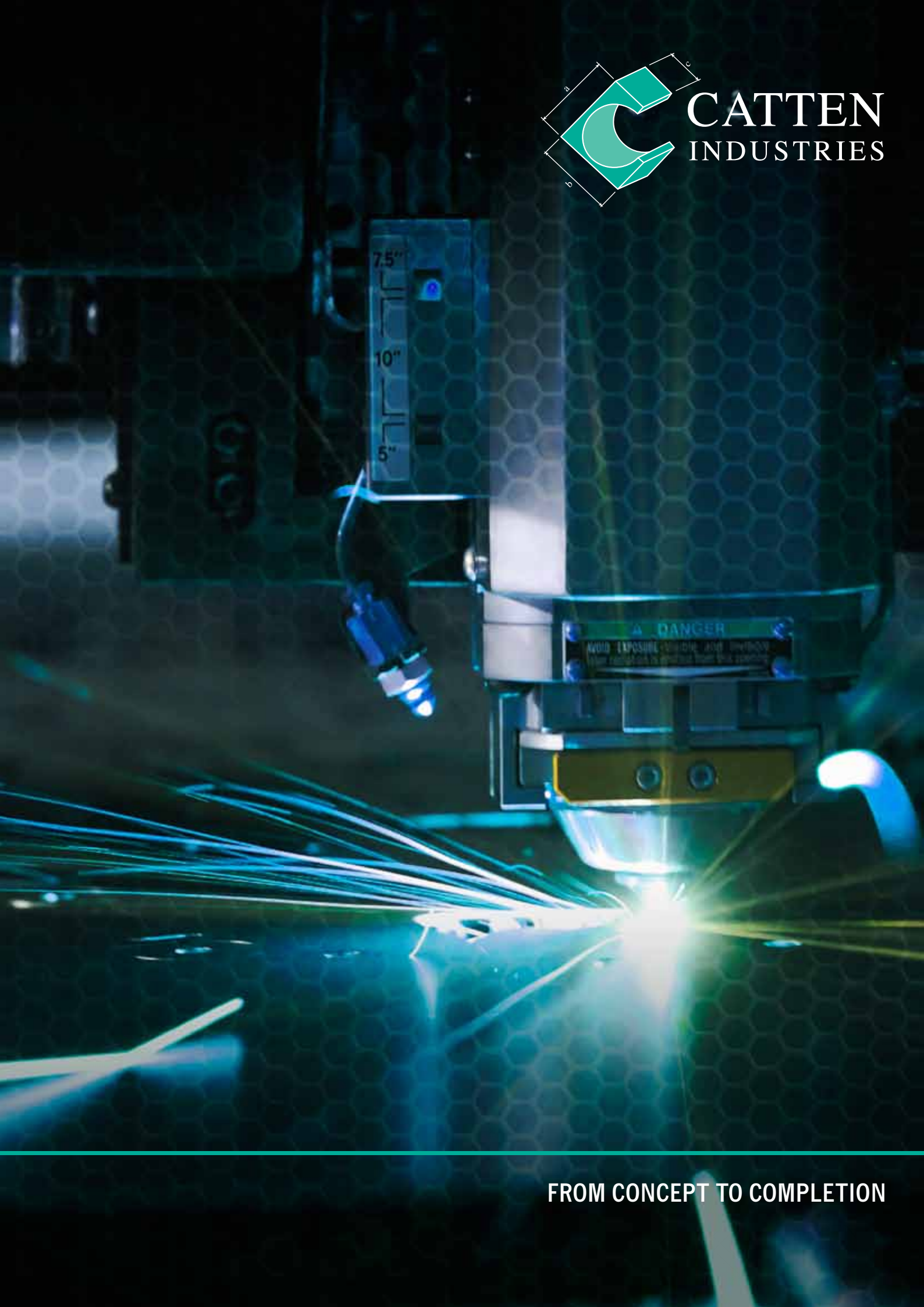


CATTEN
INDUSTRIES



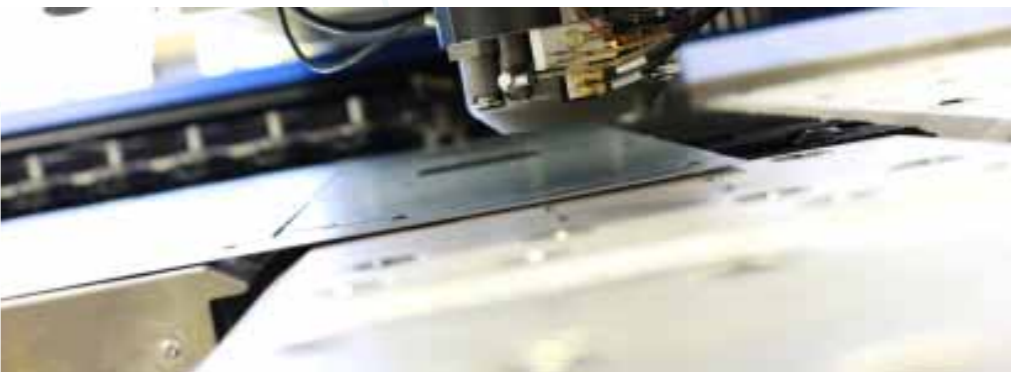
FROM CONCEPT TO COMPLETION

CATTEN INDUSTRIES CAN MANAGE YOUR PROJECT FROM THE EARLY DESIGN AND PROTOTYPE STAGE, THROUGH MANUFACTURING, METAL FINISHING, ASSEMBLY AND PACKAGING.

Catten Industries Pty Ltd of Bayswater, Victoria, is a wholly owned Australian company, specialising in the field of precision sheet metal fabrication.

Our modern facility incorporates our design and development division, which can manage your project from concept to completion. Our factory has the right machinery, operated by highly skilled staff, making sure that whatever the product, it is made to the highest standards for our many valuable customers.

Catten was established in 1994 to provide a quality sheet metal fabrication service to industry. The company operates in Bayswater, Victoria, Australia from a modern factory of 2,564 square metres (27,598 square feet) and is advantageously located in the East of Melbourne's industrial heartland.



Production Control - MRP / 3D Modelling

Catten's fully integrated MRP system allows us to track jobs from quote through to invoice, with data collection giving us live real-time information on the progress of your job.

Our SolidWorks 3D modelling allows us to work with our clients to achieve the optimum design to suit your specific requirements.

Manufacturing - CNC Punching / Laser Cutting

The Catten manufacturing plant is fully equipped with CNC machinery which is capable of providing the accuracy required to achieve client specification, and keep unit costs to a minimum.

Manufacturing - Specialist Punches & Presses

Our wide range of production facilities include various presses for a multitude of punching operations, application of pressed fasteners, fitting of studs (auto feed) nuts, notching and forming.

**Manufacturing
- NC Folders and Formers**

Catten's experienced production personnel utilize a variety of press brakes to ensure the accurate, efficient blanking and forming of products.

Continued upgrading of our production procedures and equipment, is one key in keeping Catten at the forefront of manufactured precision sheet metal products and associated components.

**Manufacturing
- Welding & Pre-finishing**

Our welding section has the capacity for spot welding, MIG, TIG and automated robotic welding.

Catten have a dedicated area for the dressing and finishing of parts, which includes deburring and polishing.

**Metal Finishing
- Powder Coating,
Painting & Plating**

Catten has a broad range of finishes and finishing techniques available, including: powder coating, both epoxy and polyester; wet spraying; oven baking and chrome; nickel or zinc plating.

We can schedule logos or information to be screen printed directly on to clients cabinets and componentry or affixed using permanent labels.



**OUR EXPERIENCED ENGINEERING
TEAM CAN HELP TO ASSESS
THE MOST COST EFFICIENT WAY TO
FAST TRACK YOUR NEXT PROJECT**



“OUR CUSTOMERS ARE
OUR FIRST PRIORITY”

Quality Control & Testing

*Catten hold accreditation
to ISO 9001*

In tune with the philosophies of Total Quality Management, our company has a multi-skilled workforce capable of adapting to the many various customer needs.

Each team member has responsibility for quality and deadline management, and this is monitored through all stages of manufacture until final inspection in accordance with ISO 9001.

Assembly & Packaging

Our multi-skilled workforce are experienced in the many aspects of component assembly work to suit clients various requirements. We can either use your own packaging, or design / obtain packaging suitable for local, interstate or overseas shipment.

Catten has facilities for stretch wrapping, bubble wrap, air or sea freight packs, crates, shock-proof palletising, stillages or pallets for local shipment.

Distribution

Catten has a large despatch area complete with forklift loading facilities. We distribute locally with our own transport or we can organize specialist local, country, interstate or overseas carriers suitable for a particular requirement.

Commitment To Staff Development

Our team have a continual involvement in the development and understanding of quality control and manufacturing methodology.

Commitment To Customers

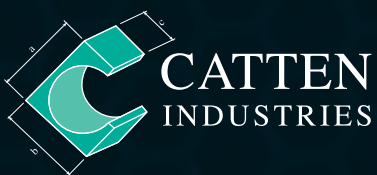
Catten is committed to safe work practices and complying with statutory and regulatory requirements.

We plan to be an industry leader by understanding our customers' products and service requirements and developing and improving ways to consistently meet those requirements of our customer base at our most competitive pricing, using our experience and best / most economical method of manufacture.

To achieve this goal in an environment of quality awareness and safe work practices, we have implemented our Quality Management System conforming to AS/NZS ISO 9001.

Catten management is committed to our quality system and will regularly review it to improve its effectiveness in meeting customers' and stakeholders' needs.





Catten Industries Pty Ltd
A.C.N. 092 591 752
A.B.N. 11 092 591 752

58 Jersey Road, Bayswater, VIC. 3153
Ph: (03) 9720 5777 Fax: (03) 9720 5191

Email Address: sales@catten.com.au
Website: www.catten.com.au

