



To learn more about
Samsung AIR CONDITIONERS
visit www.samsung.com.au/aircon

Samsung Electronics Australia Pty Ltd
ABN 63 002 915 648
Quad Samsung, 8 Parkview Drive,
Homebush Bay NSW 2127 Australia



Samsung Air Conditioners



More than a trusted Air Conditioning solution

At the heart of family living is the home, a place full of special moments and wonderful memories where families live and grow in their own unique way.

At Samsung, we imagine all sorts of innovative ways to improve how your home functions and help it run smoothly – so you have more quality time for the joys of raising your family and looking after their well-being.

We are proud to say our Samsung brand is recognised as one of the world's leading intuitive and humanistic product design companies, and one of the world's top electronics producers.

Samsung Air Conditioners have been designed with the same passion for innovation and quality that has helped make Samsung one of the 2012 Best Global Brands*.

Samsung Air Conditioning systems are held in high esteem around the world and have been selected for a multitude of developments including shopping centres, airports, stadiums and hotels.

Samsung continues to invest heavily in R&D, performance testing and quality control to deliver quality Air Conditioning systems to market.



*Source: Best Global Brand 2012. Interbrand.



PRINCIPAL PARTNER



Image used with permission from Sydney Opera House Trust.

Control your comfort from virtually anywhere*

Wi-Fi control is now available for Samsung Ducted Air Conditioners, 4-Way Cassette S Systems and Samsung Smart Series™ Wall Mounted Split Systems.

Samsung Wi-Fi enabled* Air Conditioners aim to change the way you can control your comfort as the control is literally at your finger tips, virtually no matter where you are. Samsung Wi-Fi enabled Air Conditioners allow the user to control the Air Conditioning unit via their compatible Android™ or iOS Smartphone or compatible Tab (sold separately) while they are in or out of the house.

* Wi-Fi enabled control requires a wireless router. Wi-Fi enabled control is compatible with selected Android™ and iOS Smartphones and requires the Smart Air Conditioner app, downloaded from Google Play or iTunes. To use 'Out Of House' control, users must register the product at <http://global.samsungsmartappliance.com>. Internet connection required. Data charges may apply. Android is a trademark of Google Inc. iOS is a trademark or registered trademark of Cisco in the U.S. and other countries and is used under licence. iTunes is a trademark of Apple Inc., registered in the U.S. and other countries.



Out of Home*

Using your compatible Smartphone or compatible Tab you can now control your Samsung Air Conditioning unit from virtually anywhere outside of your home. When connected out of home, you will need to be on a 3G, 4G or Wi-Fi network.

Forgotten to turn your Air Conditioning unit off?

Samsung Wi-Fi control allows you to turn the Air Conditioning System off virtually wherever you are*. Before you get home, check the current temperature in the room and turn your Air Conditioner on to your preferred temperature so it's to your comfort on arrival.

At Home

When connected to your in house Wi-Fi network, your compatible Smart device acts like another remote control. However, line of sight is not always needed. For example, you could turn on your Air Conditioning unit from your compatible Smartphone or compatible Tab in the upstairs bedroom whilst you sit on the lounge watching TV so that your room is comfortable before going up to sleep.

Smartphone Tablet



Visit www.samsung.com.au/aircon for more information about Samsung Air Conditioners.

Samsung Smartphone and Tab sold separately.

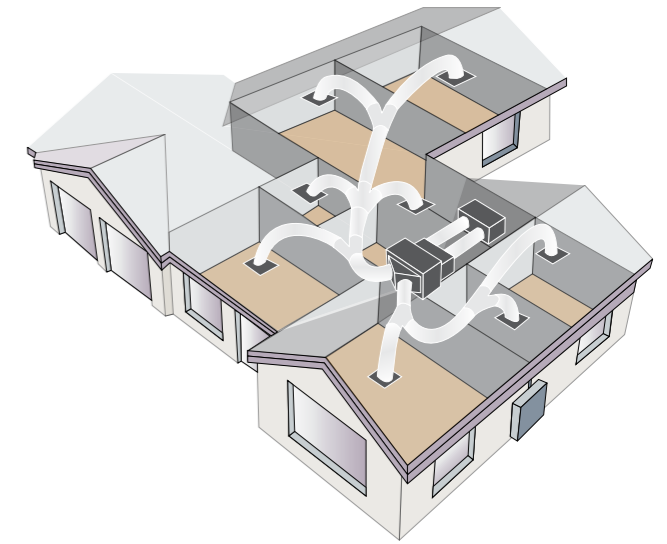
Samsung Ducted Air Conditioning System



Working to keep you and your family comfortable all year round

A Samsung inverter reverse cycle Ducted Air Conditioner is designed to enable each room in your home to be cooled or heated by one system. Ducted Systems are also relatively unobtrusive as the conditioned air is distributed through ducts hidden in your roof space to outlets in the ceiling of each room.

The primary components of your Samsung Ducted System consist of the indoor unit, outdoor unit and controller.



Controller

A stylish and intuitive controller makes it easy to select desired temperature and fan speeds. Premium controller models also include a number of advanced features such as LCD backlighting and time scheduling.



MWR-WE10 featured

Outdoor

The outdoor unit contains the Samsung Smart Inverter compressor which circulates refrigerant to the indoor unit and back again. The unit also contains a heat exchanging coil and a fan which blows air across the coil.



RC071DHXEA/XSA

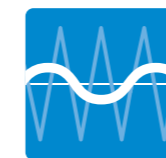
Indoor Unit

The indoor unit, hidden from view, also contains a heat exchanging coil that cools the air in your house in cooling mode and warms it in heating mode. A fan then blows the conditioned air through the ducts installed in your roof space to the outlets in the ceiling of each room.



NS100HHEG/XSA

Samsung Smart Inverter



Intelligent and effective air

Samsung's Smart Inverter technology maintains the ideal temperature without constantly shutting off and switching on the compressor. It automatically adjusts the capacity of the system to cope with almost any temperature variances, helping to ensure that you experience minimal temperature fluctuation for optimal comfort.



*Graph not drawn to scale



Comfortable, reliable air

Samsung Ducted Air Conditioners are designed to keep on working, even on those extremely hot or cold days. With an operating range of -15°C to 46°C outside air temperature for cooling, and -20°C to 24°C for heating, you can be assured that your unit will work when you need it the most*.

-20°C to 46°C

*Whilst the unit will keep running up to 46°C for cooling, as the outside temperature rises above 35°C, the cooling capacity will reduce. Similarly for heating, the capacity begins to reduce below 7°C.

Stylish design and year round comfort



Samsung 4-Way Cassette S Range

There are two distinct solutions in the Samsung 4-Way Cassette S Range

Samsung 4-Way Cassette S is ideal for residential and light commercial applications with limited roof space. This product has a stylish design, an effective Smart Inverter compressor and a plethora of innovative features.

Samsung Mini 4-Way Cassette S is ideal for small spaces in residential and light commercial applications where roof space may be too limited for other Air Conditioner types. They have a compact ceiling 'footprint' which helps them blend into the ceiling in your home whilst still packing many features.



Cassette S Range Features



Stylish Panel Design

Both Samsung Cassette S models have a stylish waffle pattern design with a subtle fascia panel to complement the aesthetics of almost any interior space.

Mini 4-Way Cassette S specifically uses cleverly designed blades to close flush with the unit when not operating to maintain a sleek and unobtrusive look.

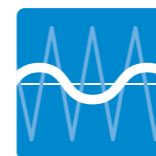


Wide Temperature Performance Range

The 4-Way Cassette S is designed with an operating range of -15°C to 50°C outside air temperature for cooling, and -20°C to 24°C for heating. You can be assured that your unit will work when you need it the most*.

	Outside Air Temp for Cooling	Outside Air Temp for Heating
4-Way Cassette S	-15°C to 50°C	-20°C to 24°C
Mini 4-Way Cassette S	-10°C to 46°C	-15°C to 24°C

*Whilst the unit will keep running up to 50°C for cooling, as the outside temperature rises above 35°C, the cooling capacity will reduce. Similarly for heating, the capacity begins to reduce below 7°C.

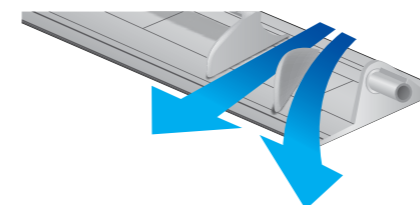


Smart Inverter Compressor

Samsung's Smart Inverter technology maintains the ideal temperature without constantly shutting off and switching on the compressor. It automatically adjusts the capacity of the system to cope with temperature variances, helping to ensure that you experience minimal temperature fluctuation for optimal comfort.

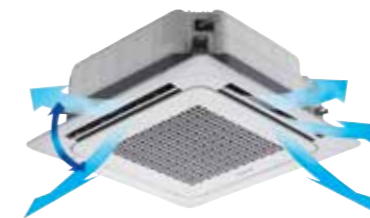
More Uniform Airflow

The blades have angled sections to guide air 'around the corner'. This helps to reduce the 'blind spot' effect of the corners giving more uniform airflow.



Customisable Air Flow

The unit can be configured as a 4, 3, 2 or even 1-Way Cassette by selecting which blades are open when the unit is running. Vertical blade angles can be individually set for optimum airflow in your home.

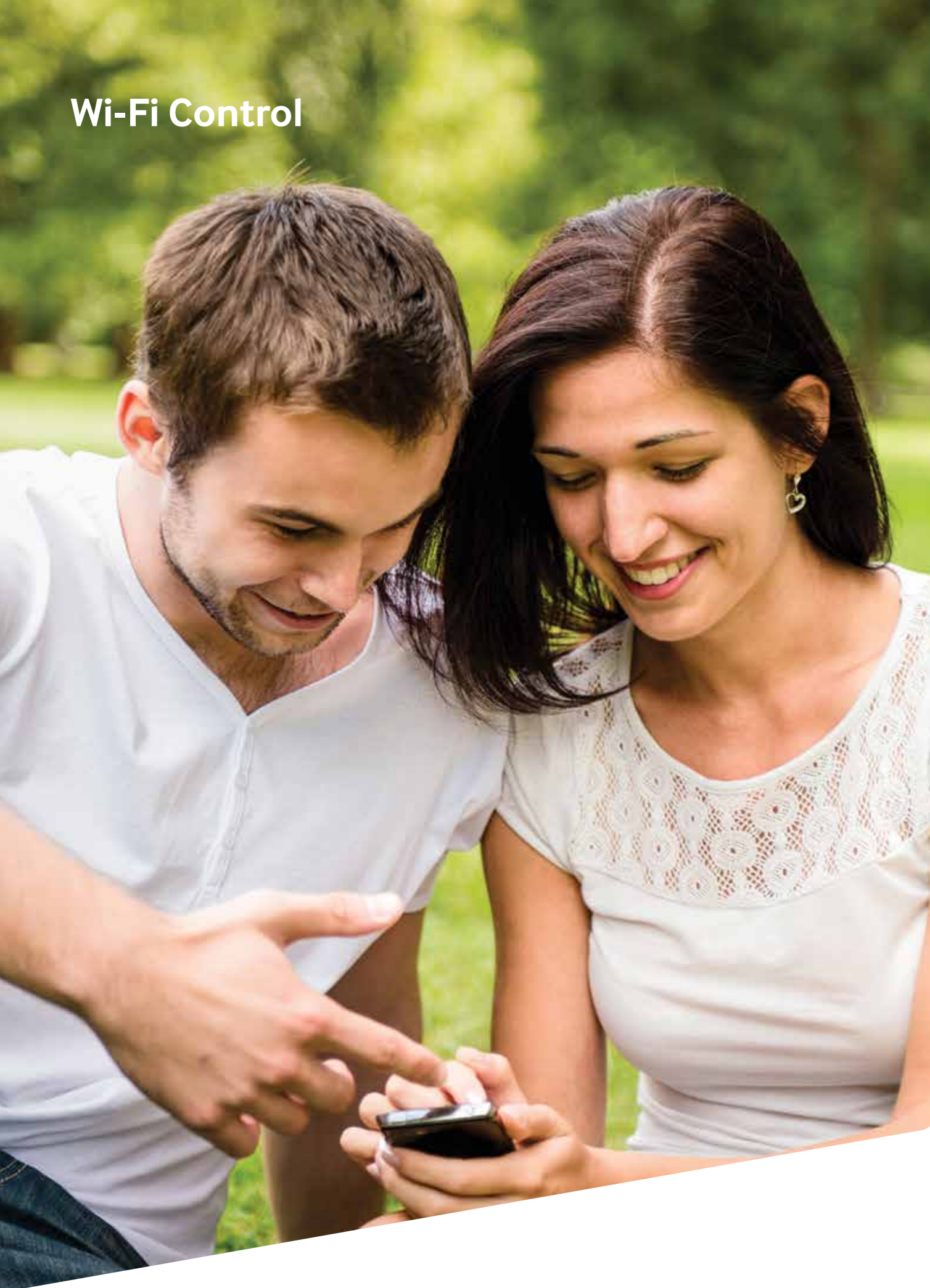


Easy To Clean

Airflow blades can be easily removed individually for cleaning so you don't need to remove the whole panel.



Wi-Fi Control



Wi-Fi Control

Samsung Smart Series™ Wall Mounted Split Systems and, when combined with the optional kit, Samsung Ducted Air Conditioning systems and 4-Way Cassette S Systems can be controlled via a compatible Smart device*.



Router sold separately.

Smart Air Conditioner App

Features that control your comfort from virtually anywhere*.



Turn your Air Conditioning unit On/Off



Check and adjust the temperature of the room



Advanced On/Off Timer settings
Program what time you want your unit to turn on or off
Set day(s) of the week you would like this to occur



Multiple Air Conditioning units can be run from one App and device

* Wi-Fi enabled control requires a wireless router. Wi-Fi enabled control is compatible with selected Android™ and iOS Smartphones and requires the Smart Air Conditioner app, downloaded from Google Play or iTunes. To use 'Out Of House' control, users must register the product at <http://global.samsungsmartappliance.com>. Internet connection required. Data charges may apply. Android is a trademark of Google Inc. iOS is a trademark or registered trademark of Cisco in the U.S. and other countries and is used under licence. iTunes is a trademark of Apple Inc., registered in the U.S. and other countries.

Intuitive Control



Easy to use and stylish in design



Optional Premium Controller MWR-WE10 featured

To accompany the Ducted Air Conditioning System and the 4-Way Cassette S System, is a choice of controller. The Standard and Premium controllers are designed to match and enhance the look of your home.

Standard Controller Features



Quick-Access On/Off And Temperature Selection Buttons



Built-In Room Temperature Sensor



Child Lock



Button Permission Levels



Filter Replacement Alert



On/Off Timer

Allows the system to be started or stopped after a set time has passed.



Upper/Lower Temperature Limit Setting

Prevents temperature changes outside a set range.



Automatic Stop Function

Can help set the unit to stop running after a set time has passed. This can help prevent the system being left on accidentally.

Premium Controller Features

Includes all Standard Controller features plus:



Clear And Bright LCD Backlit Screen



Real-Time Clock Function



Weekly Operation Scheduler

Enables you to set your system to run automatically at certain times of each day of the week.

Peace of Mind



Samsung Air Conditioning Committed to After Sales and Warranty Support



5 Year Warranty on Parts and Labour

Rest assured that you are buying a quality Air Conditioner with Samsung's 5 year parts and labour warranty on products featured in this brochure. Refer to the warranty card included with your product for full details*.



National Samsung Service Network

Our national network of Authorised Service Centres and Customer Service Plazas are on hand to support your product. Our specialist technicians will provide a fast and effective response.



Product Support Line

If you have any concerns about your product simply call 1300 362 603 and our friendly staff will assist with your enquiry and book a service call if required.



MEPS Compliant

Air Conditioners sold in Australia are required to meet Minimum Energy Performance Standards (MEPS) set by the Government.

These standards are based on the ratio of a system's energy input versus its capacity.

On the 1st of April 2012 the latest minimum efficiency levels came into effect. Samsung is proud to state that our latest inverter ducted, 4-Way Cassette S and Mini 4-Way Cassette S Systems are fully compliant with these MEPS levels.

* This is in addition to the rights of consumers under consumer guarantees pursuant to the Australian Consumer Law.

SAMSUNG DUCTED SYSTEM

Models and Specifications



Model Name System	Indoor Unit			NS071SDXEA/XSA	NS100HHXEG/XSA	NS125HHXEG/XSA	NS140HHXEG/XSA	NS155HHXEG/XSA	NS180HHXEG/XSA
	Outdoor Unit			RC071DHXEA/XSA	RC100DHXEG/XSA	RC125DHXEG/XSA	RC140DHXEG/XSA	RC155DHXEG/XSA	RC180DHXGG/XSA
Mode			-	Reverse Cycle	Reverse Cycle	Reverse Cycle	Reverse Cycle	Reverse Cycle	Reverse Cycle
Capacity	Capacity (Nominal)	Cooling (Min / Std / Max)	kW	2.2 / 7.1 / 8.0	3.5 / 10.0 / 13.3	3.5 / 12.5 / 14.0	3.5 / 14.0 / 16.0	3.5 / 15.5 / 17.0	3.8 / 17.5 / 20.0
		Heating (Min / Std / Max)	kW	1.9 / 8.0 / 9.0	3.8 / 11.2 / 15.0	3.8 / 14.0 / 17.0	3.8 / 16.0 / 19.0	3.8 / 17.0 / 20.0	4.4 / 21.0 / 24.0
Power	Power Input (Nominal)	Cooling (Min / Std / Max)	kW	0.35 / 2.21 / 4.0	1.3 / 2.7 / 4.8	1.3 / 3.85 / 5.1	1.5 / 4.31 / 6.2	1.5 / 4.77 / 7.4	1.2 / 5.47 / 7.2
		Heating (Min / Std / Max)	kW	0.35 / 2.22 / 4.0	1.1 / 2.87 / 4.9	1.0 / 3.78 / 6.2	1.2 / 4.32 / 7.4	1.2 / 4.72 / 8.0	1.2 / 6.0 / 8.0
	Current Input (Nominal)	Cooling (Min / Std / Max)	A	2.0 / 10.5 / 21.0	6.5 / 12.2 / 20.7	6.5 / 17.0 / 22.5	7.0 / 19.0 / 28.0	7.0 / 21.5 / 32.0	2.6 / 9.1 / 11.3
		Heating (Min / Std / Max)	A	2.0 / 10.5 / 21.0	6.0 / 12.9 / 21.2	6.0 / 16.5 / 26.0	6.5 / 19.0 / 32.0	6.5 / 21.0 / 34.0	2.3 / 9.9 / 12.0
	Circuit Breaker (MCCB+ELB / ELCB)		A	25	30	30	40	40	20
Energy Efficiency	AEER (Annual Energy Efficiency Ratio)		-	3.15	3.65	3.21	3.22	3.22	3.18
	ACOP (Annual Coefficient of Performance)		-	3.54	3.85	3.66	3.67	3.57	3.48
Piping Connections	Liquid Pipe		Φ, mm(inch)	6.35 (1/4)	9.52 (3/8)	9.52 (3/8)	9.52 (3/8)	9.52 (3/8)	9.52 (3/8)
	Gas Pipe		Φ, mm(inch)	15.88 (5/8)	19.05 (3/4)	19.05 (3/4)	19.05 (3/4)	19.05 (3/4)	19.05 (3/4)
	Installation Limitation	Max. Length (Outdoor to indoor)	m	50.0	75.0	75.0	75.0	75.0	75.0
		Max. Height (Between ID/OD)	m	30.0	30.0	30.0	30.0	30.0	30.0
Refrigerant	Type		-	R410A	R410A	R410A	R410A	R410A	R410A
	Factory Charging		kg	1.8 (Charged for 5m)	3.4 (Charged for 30m)	3.4 (Charged for 30m)	4.4 (Charged for 30m)	4.4 (Charged for 30m)	4.8 (Charged for 30m)
Indoor unit									
Power Supply			Φ, #, V, Hz	1, 2, 220~240, 50	1, 2, 220~240, 50	1, 2, 220~240, 50	1, 2, 220~240, 50	1, 2, 220~240, 50	1, 2, 220~240, 50
Fan	Type		-	Sirocco Fan	Sirocco Fan	Sirocco Fan	Sirocco Fan	Sirocco Fan	Sirocco Fan
	Air Flow Rate	High / Mid / Low	ℓ/s	317 / 283 / 250	600 / 550 / 500	750 / 633 / 517	833 / 733 / 633	867 / 767 / 667	1,067 / 933 / 833
	External Static Pressure	Max / Std / Min	Pa	98.1 / 39.2 / 0	196 / 60 / 49	196 / 60 / 49	196 / 60 / 49	196 / 60 / 49	245 / 60 / 49
Sound	Sound Pressure	High / Mid / Low	dB(A)	39 / 35	46 / 40.5 / 35	48 / 42.5 / 37	50 / 44.5 / 39	51 / 46 / 41	52 / 46 / 44
Plenum Size	Supply Air Spigot (WxH)		mm	904 x 185	1000 x 253	1000 x 253	1000 x 253	1000 x 253	1188 x 385
	Return Air Spigot (WxH)		mm	985 x 178*	1160 x 276	1160 x 276	1160 x 276	1160 x 276	1188 x 385
External Dimension	Net Weight		kg	33	58.0	60.0	60.0	60.0	95.0
	Shipping Weight		kg	40	67.5	69.5	69.5	69.5	105.0
	Net Dimensions (WxHxD)		mm	1,150 x 260 x 480	1,200 x 360 x 650	1,200 x 360 x 650	1,200 x 360 x 650	1,200 x 360 x 650	1,240 x 470 x 1,040
	Shipping Dimensions (WxHxD)		mm	1,405 x 354 x 593	1,447 x 425 x 769	1,447 x 425 x 769	1,447 x 425 x 769	1,447 x 425 x 769	1,507 x 558 x 1,155
Outdoor unit									
Power Supply			Φ, #, V, Hz	1, 2, 220~240, 50	1, 2, 220~240, 50	1, 2, 220~240, 50	1, 2, 220~240, 50	1, 2, 220~240, 50	3, 4, 380~415, 50
Compressor	Type		-	Twin BLDC Rotary	Twin BLDC Rotary	Twin BLDC Rotary	Twin BLDC Rotary	Twin BLDC Rotary	Twin BLDC Rotary
Fan	Air Flow Rate	Cooling / Heating	ℓ/s	833 / 800	1,508 / 1,508	1,508 / 1,508	1,683 / 1,683	1,683 / 1,683	2,150 / 2,150
Sound	Sound Pressure	Cooling / Heating	dB(A)	49 / 51	50 / 52	51 / 53	52 / 54	53 / 55	55 / 57
External Dimension	Net Weight		kg	55	88.0	88.0	99.0	99.0	102.0
	Shipping Weight		kg	59	98.0	98.0	109.0	109.0	111.0
	Net Dimensions (WxHxD)		mm	880 x 798 x 310	940 x 1,210 x 330	940 x 1,210 x 330	940 x 1,420 x 330	940 x 1,420 x 330	940 x 1,420 x 330
	Shipping Dimensions (WxHxD)		mm	1,023 x 889 x 416	995 x 1,338 x 426	995 x 1,338 x 426	995 x 1,548 x 426	995 x 1,548 x 426	995 x 1,548 x 426
Operating Temp. Range	Cooling		°C	-15 ~ 50	-15 ~ 50	-15 ~ 50	-15 ~ 50	-15 ~ 50	-15 ~ 50
	Heating		°C	-20 ~ 24	-20 ~ 24	-20 ~ 24	-20 ~ 24	-20 ~ 24	-20 ~ 24
				D.R.E.D	D.R.E.D	D.R.E.D	D.R.E.D	D.R.E.D	D.R.E.D

*Specifications may be subject to change without prior notice for product improvement.

*1) Nominal cooling capacities are based on:
 - Indoor temperature: 27°C DB, 19°C WB / Outdoor temperature: 35°C DB, 24°C WB
 - Equivalent refrigerant piping: 7.5m, Level differences: 0m

*2) Nominal heating capacities are based on:
 - Indoor temperature: 20°C DB, 15°C WB / Outdoor temperature: 7°C DB, 6°C WB
 - Equivalent refrigerant piping: 7.5m, Level differences: 0m

*3) Sound pressure was acquired in a dead room.

Thus actual noise level may be different depending on the installation conditions.

*4) NS071SDXEA/XSA return air flange not supplied.
 Dimension shown in above table is the opening size.

D.R.E.D Samsung models NS100HHXEG/XSA, NS125HHXEG/XSA, NS140HHXEG/XSA, NS155HHXEG/XSA, and NS180HHXEG/XSA are enabled with Demand Response Enabled Device (D.R.E.D) circuitry.

4-WAY CASSETTE S SYSTEM

Models and Specifications



Model Name	Indoor Unit		NS0714PXEA/XSA	NS1004PXEA/XSA	NS1254PXEA/XSA	NS1404PXEA/XSA		
System	Outdoor Unit		RC071PHXEA/XSA	RC100PHXEA/XSA	RC125PHXEA/XSA	RC140PHXEA/XSA		
Mode			-	Reverse Cycle	Reverse Cycle	Reverse Cycle		
Capacity	Capacity (Nominal)	Cooling (Min / Std / Max)	kW	2.2 / 7.1 / 8.0	3.5 / 10.0 / 12.0	3.5 / 12.5 / 14.0	4.4 / 14.0 / 15.5	
		Heating (Min / Std / Max)	kW	1.9 / 8.0 / 9.0	3.5 / 11.2 / 15.5	3.5 / 14.0 / 16.2	3.5 / 16.0 / 20.0	
Energy Efficiency	AEER (Annual Energy Efficiency Ratio)		-	3.49	3.99	3.39	3.30	
	ACOP (Annual Coefficient of Performance)		-	3.90	4.29	3.70	3.79	
Power	Power Input (Nominal)	Cooling (Min / Std / Max)	kW	0.35 / 2.03 / 4.00	0.8 / 2.5 / 3.8	0.8 / 3.68 / 4.8	1.05 / 4.24 / 5.4	
		Heating (Min / Std / Max)	kW	0.35 / 2.05 / 4.00	0.7 / 2.61 / 4.5	0.7 / 3.78 / 4.5	0.87 / 4.32 / 6.5	
	Current Input (Nominal)	Cooling (Min / Std / Max)	A	2.1 / 9.5 / 18.0	3.7 / 10.5 / 24.0	3.7 / 15.5 / 24.0	4.6 / 17.8 / 24.0	
		Heating (Min / Std / Max)	A	2.1 / 9.5 / 18.0	3.5 / 11.5 / 24.0	3.5 / 16.0 / 24.0	4.0 / 18.7 / 28.0	
Circuit Breaker (MCCB+ELB / ELCB)			A	25	30	30	40	
Piping Connections	Liquid Pipe		Φ, mm(inch)	6.35 (1/4)	9.52 (3/8)	9.52 (3/8)	9.52 (3/8)	
	Gas Pipe		Φ, mm(inch)	15.88 (5/8)	15.88 (5/8)	15.88 (5/8)	15.88 (5/8)	
	Installation Limitation	Max. Length	m	50.0	75.0	75.0	75.0	
		Max. Height	m	30.0	30.0	30.0	30.0	
Refrigerant	Type		-	R410A	R410A	R410A	R410A	
	Factory Charging		kg	1.8 (Charged for 5m)	3.4 (Charged for 30m)	3.4 (Charged for 30m)	3.8 (Charged for 30m)	
Indoor unit								
Power Supply			Φ, #, V, Hz	1, 2, 220~240, 50	1, 2, 220~240, 50	1, 2, 220~240, 50	1, 2, 220~240, 50	
Fan	Type		-	Turbo Fan / BLDC	Turbo Fan / BLDC	Turbo Fan / BLDC	Turbo Fan / BLDC	
	Air Flow Rate		High / Mid / Low	ℓ/s	(C) 383 / 350 / 292 (H) 367 / 300 / 267	500 / 400 / 300	500 / 400 / 317	533 / 433 / 350
Sound	Sound Pressure		High / Mid / Low	dB(A)	36 / 32 / 28	44 / 39 / 34	44 / 40 / 36	45 / 41.5 / 38
External Dimension	Net Weight			kg	17	21	21	21
	Shipping Weight			kg	22	26	26	26
	Net Dimensions (WxHxD)			mm	840 x 246 x 840	840 x 288 x 840	840 x 288 x 840	840 x 288 x 840
	Shipping Dimensions (WxHxD)			mm	898 x 316 x 898	898 x 357 x 898	898 x 357 x 898	898 x 357 x 898
Panel Size	Panel model			-	PC4NUSKA / PC4NUSKE	PC4NUSKA / PC4NUSKE	PC4NUSKA / PC4NUSKE	PC4NUSKA / PC4NUSKE
	Panel Net Weight			kg	5.9	5.9	5.9	5.9
	Shipping Weight			kg	8.4	8.4	8.4	8.4
	Net Dimensions (WxHxD)			mm	950 x 45 x 950	950 x 45 x 950	950 x 45 x 950	950 x 45 x 950
	Shipping Dimensions (WxHxD)			mm	1,005 x 100 x 1,005	1,005 x 100 x 1,005	1,005 x 100 x 1,005	1,005 x 100 x 1,005
Accessories	Drain pump	Drain pump	-	Built-in	Built-in	Built-in	Built-in	
		Max. Lifting Height / Displacement	mm / ℓ/h	750 / 24	750 / 24	750 / 24	750 / 24	
	Air Filter			-	Long life filter	Long life filter	Long life filter	Long life filter
Outdoor unit								
Power Supply			Φ, #, V, Hz	1, 2, 220~240, 50	1, 2, 220~240, 50	1, 2, 220~240, 50	1, 2, 220~240, 50	
Compressor	Type			-	Twin BLDC Rotary	Twin BLDC Rotary	Twin BLDC Rotary	
Fan	Air Flow Rate		Cooling / Heating	ℓ/s	833 / 800	1,508 / 1,383	1,508 / 1,508	1,683 / 1,683
Sound	Sound Pressure		Cooling / Heating	dB(A)	49 / 51	49 / 51	51 / 52	51 / 53
	Net Weight			kg	55	88	88	98
External Dimension	Shipping Weight			kg	59	98	98	108
	Net Dimensions (WxHxD)			mm	880 x 798 x 310	940 x 1,210 x 330	940 x 1,210 x 330	940 x 1,420 x 330
	Shipping Dimensions (WxHxD)			mm	1,023 x 889 x 416	995 x 1,338 x 426	995 x 1,338 x 426	995 x 1,548 x 426
Operating Temp. Range	Cooling			°C	-15 ~ 50	-15 ~ 50	-15 ~ 50	-15 ~ 50
	Heating			°C	-20 ~ 24	-20 ~ 24	-20 ~ 24	-20 ~ 24

*Specifications may be subject to change without prior notice for product improvement.

*1) Nominal cooling capacities are based on:
 - Indoor temperature: 27°C DB, 19°C WB
 - Outdoor temperature: 35°C DB, 24°C WB
 - Equivalent refrigerant piping: 5m, Level differences: 0m

*2) Nominal heating capacities are based on:
 - Indoor temperature: 20°C DB, 15°C WB
 - Outdoor temperature: 7°C DB, 6°C WB
 - Equivalent refrigerant piping: 5m, Level differences: 0m

*3) Sound pressure was acquired in a dead room.
 Thus actual noise level may be different depending on the installation conditions.

MINI 4-WAY CASSETTE S SYSTEM

Models and Specifications



Model Name System	Indoor Unit			ACN026NDEHH/SA	ACN035NDEHH/SA	ACN052NDEHH/SA	ACN060NDEHH/SA	
	Outdoor Unit			RC026DHXEH/XSA	RC035DHXEH/XSA	RC052DHXEH/XSA	RC060DHXEH/XSA	
Mode				-	Heat Pump	Heat Pump	Heat Pump	Heat Pump
Capacity	Capacity (Nominal)	Cooling (Min / Std / Max)	kW	0.99 / 2.6 / 3.5	0.99 / 3.5 / 4.2	1.3 / 5.0 / 5.9	1.8 / 5.8 / 6.5	
		Heating (Min / Std / Max)	kW	0.98 / 3.3 / 4.6	0.98 / 4.0 / 5.0	1.3 / 5.5 / 7.5	1.6 / 6.4 / 9.0	
Power	Power Input (Nominal)	Cooling (Min / Std / Max)	kW	0.23 / 0.65 / 1.13	0.24 / 0.94 / 1.45	0.31 / 1.39 / 2.10	0.38 / 1.75 / 2.60	
		Heating (Min / Std / Max)	kW	0.18 / 0.87 / 1.40	0.18 / 1.07 / 1.40	0.35 / 1.62 / 2.40	0.35 / 1.93 / 3.60	
	Current Input (Nominal)	Cooling (Min / Std / Max)	A	1.6 / 3.07 / 5.5	1.6 / 4.4 / 6.8	2.6 / 6.5 / 9.5	1.9 / 7.8 / 11.5	
		Heating (Min / Std / Max)	A	1.2 / 4.1 / 6.6	1.2 / 5.0 / 6.7	2.9 / 7.6 / 11.0	1.7 / 8.7 / 17.3	
	MCA		A	11	15	24	24	
	MFA		A	20	20	30	30	
Energy Efficiency	AEER (Annual Energy Efficiency Ratio)		-	3.98	3.71	3.59	3.31	
	ACOP (Annual Coefficient of Performance)		-	3.79	3.73	3.39	3.31	
Piping Connections	Liquid Pipe		Φ, mm(inch)	6.35, 1/4"	6.35, 1/4"	6.35, 1/4"	6.35, 1/4"	
	Gas Pipe		Φ, mm(inch)	9.35, 3/8"	12.7, 1/2"	15.88, 5/8"	15.88/5/8"	
	Installation Limitation	Max. Length	m	20	30	50	50	
		Max. Height	m	15	20	30	30	
Refrigerant	Type		-	R410A	R410A	R410A	R410A	
	Factory Charging		kg	0.95	1.40	1.80	1.80	
Indoor unit								
Power Supply			Φ, #, V, Hz	1, 2, 220~240, 50	1, 2, 220~240, 50	1, 2, 220~240, 50	1, 2, 220~240, 50	
Fan	Type		-	Turbo Fan	Turbo Fan	Turbo Fan	Turbo Fan	
	Air Flow Rate	High / Mid / Low	ℓ/s	163 / 137 / 115	182 / 150 / 122	207 / 178 / 150	213 / 185 / 157	
Sound	Sound Pressure	High / Mid / Low	dB(A)	34 / 31 / 27	36 / 33 / 29	39 / 36 / 34	41 / 38 / 34	
External Dimension	Net Weight		kg	11.0	11.7	12.0	12.0	
	Shipping Weight		kg	13.0	13.7	14.0	14.0	
	Net Dimensions (WxHxD)		mm	575 x 250 x 575	575 x 250 x 575	575 x 250 x 575	575 x 250 x 575	
	Shipping Dimensions (WxHxD)		mm	623 x 298 x 653	623 x 298 x 653	623 x 298 x 653	623 x 298 x 653	
Panel Size	Panel model		-	PC4SUSMB	PC4SUSMB	PC4SUSMB	PC4SUSMB	
	Panel Net Weight		kg	2.7	2.7	2.7	2.7	
	Shipping Weight		kg	4.2	4.2	4.2	4.2	
	Net Dimensions (WxHxD)		mm	670 x 45 x 670	670 x 45 x 670	670 x 45 x 670	670 x 45 x 670	
	Shipping Dimensions (WxHxD)		mm	714 x 106 x 724	714 x 106 x 724	714 x 106 x 724	714 x 106 x 724	
Accessories	Drain pump	Drain pump	-	Built-in	Built-in	Built-in	Built-in	
		Max. Lifting Height / Displacement	mm / ℓ/h	750 / 24	750 / 24	750 / 24	750 / 24	
	Air Filter		-	Default	Default	Default	Default	
Outdoor unit								
Power Supply			Φ, #, V, Hz	1, 2 220~240, 50	1, 2 220~240, 50	1, 2 220~240, 50	1, 2, 220~240, 50	
Compressor	Type		-	Single BLDC Rotary	Twin BLDC Rotary	Twin BLDC Rotary	Twin BLDC Rotary	
Fan	Air Flow Rate	Cooling / Heating	ℓ/s	477	492	735	767	
Sound	Sound Pressure	Cooling / Heating	dB(A)	46 / 47	47 / 48	49 / 50	50 / 51	
External Dimension	Net Weight		kg	33	38.5	55.0	55.0	
	Shipping Weight		kg	37	42.5	59.0	59.0	
	Net Dimensions (WxHxD)		mm	790 x 548 x 285	790 x 548 x 285	880 x 798 x 310	880 x 798 x 310	
	Shipping Dimensions (WxHxD)		mm	926 x 655 x 382	927 x 655 x 382	1,023 x 891 x 413	1,023 x 891 x 413	
Operating Temp. Range	Cooling		°C	-10 ~ 46	-10 ~ 46	-15 ~ 46	-15 ~ 46	
	Heating		°C	-15 ~ 24	-15 ~ 24	-15 ~ 24	-20 ~ 24	

*Specifications may be subject to change without prior notice for product improvement.

*1) Nominal Capacities are based on (Equivalent refrigerant piping length: 7.5m, Level differences: 0m);
 - Cooling: Indoor temperature: 27°C DB, 19°C WB / Outdoor temperature: 35°C DB, 24°C WB
 - Heating: Indoor temperature: 20°C DB, 15°C WB / Outdoor temperature: 7°C DB, 6°C WB

*2) Sound pressure was acquired in an anechoic room. Thus actual noise level may be different depending on the installation conditions.

*3) Specifications are subject to change without prior notice for product improvement.