



SAFETY IN
DESIGN

AUDIT & COMPLIANCE

HEALTH & SAFETY MANAGEMENT

CONTRACTOR SAFETY
MANAGEMENT

RISK ASSESSMENTS

TRAINING


Business Introduction



Functional Risk
SOLUTIONS

www.functionalrisk.com.au

Table of Contents



Introduction	page 4
The benefits	page 4
Why Functional Risk Solutions?	page 6
Core services	page 8
Project experience	page 11
Company details	page 13
Key personnel	page 15

Introduction



Functional Risk Solutions is a multidisciplinary organisation of Safety and Risk consultants providing innovative and systematic solutions to safety and risk management.

Functional Risk Solutions offer a broad range of services and a long held commitment in providing consulting advice that not only assists in achieving compliance to the relevant legislation but more importantly helps to protect people, assets and the environment.

We believe that safety does not have to be difficult. We pride ourselves in providing our clients with functional and achievable advise, solutions, systems and products which help them manage health, safety and risk which serve to enhance their business.

We are a business focused on partnering with our clients because we see managing safety effectively as an ongoing commitment which can be continually enhanced to meet the needs of a continually evolving landscape.

The Benefits...

Enhance corporate image and reputation.

Demonstrate high corporate social responsibility.

Reduce legislative risk.

Assurance that accurate and current advice has been gained.

Reduce costs by identifying and rectifying issues early.

Ready access to professionals as and when required.

Planned budget expenditure for safety advice.

Personalised service directed to your organisation's needs.

*‘Helping protect **people**
and their environment ...’*

Why Functional Risk Solutions?

Functional Risk Solutions is well versed in assisting organizations in understanding their requirements under current workplace safety laws and in the development and implementation of procedures and policies to allow facilities and services to develop and implement their own safety culture that is real & relevant to their operations and satisfies their outcomes whilst maintaining a high level of compliance at law.

The objective of our Services is to deliver successful outcomes for our clients, by controlling cost, limiting risk and adding value in a manner that is complementary to our clients' team and the services or goods they offer.

We have an experienced team who have the capability and commitment as well as a successful track record in developing and delivering projects of a variety of sizes across all states throughout Australia.

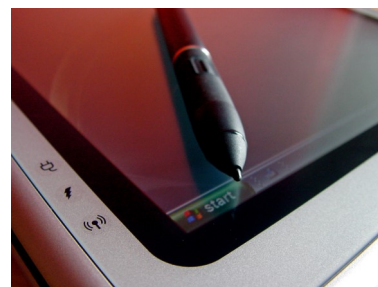
A particular strength that we offer is being able to work productively and harmoniously with complex or large stakeholder groups. We work to fulfil all stakeholder requirements with insight, creativity and verve. Through our Service Line Structures and our broad range of skills and experience, we are able to deliver on project objectives, and our specialist services will secure these objectives in a flexible, but structured framework approach.

As a result, our team brings together a robust range of skills, providing the ability to respond to the challenges posed by all types of projects

Functional Risk Solutions has the skills to assist in formalising and implementing processes that will reduce the risk and enable those obligations to be met.

We have recognized this as an important step towards providing a safer environment for people of all ages and abilities.

Together with our extensive experience in the specialised field of access, we believe that we are in the unique position to provide our clients with a comprehensive suite of services to meet their requirements under the OH&S Act as well as DDA.



Diverse Skill Base

Functional Risk Solutions is well versed to assist organizations in understanding their requirements under current workplace safety laws and assist in the development and implementation of procedures and policies to allow facilities and services to enable Universal Access for the broader community.

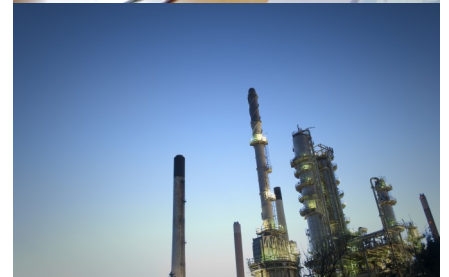
Operating across all Australian states in broad and various industries has allowed our consultants to obtain a unique perspective of national and international occupational health and safety as well as maintaining a large network of safety professionals and alliances.

With a flexible consulting approach and a comprehensive industry network, we can manage your entire safety and risk portfolio or just a single aspect of it. You might consider us an integral part of your team, or simply feel confident that we're only a phone call away.

Our team brings skills and knowledge from various sectors and professional backgrounds including allied health, building design, project management and occupational health & safety. This enables us to provide better informed, reasoned and implementable input into the projects we contribute to.

Through our work in Access Consulting, Building Design and Project Management we have developed a comprehensive knowledge base with regard to the legislative controls, standards and guidelines relevant to access for people with a disability.

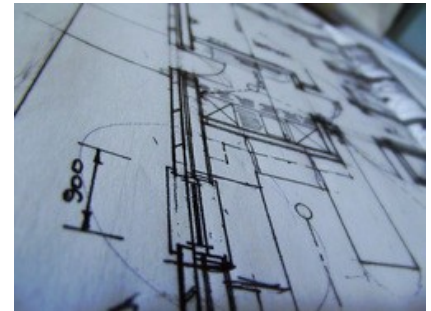
Collectively, it's clear we are well placed to provide functional, flexible and achievable advice which is sensitive to the end user's needs and all relevant building and legislative controls.



Core Services

Safety in Design

The elimination of hazards and risk are at the pinnacle of the Hierarchy of Controls so there is no better time to identify assess and eliminate hazards and risks that at the design stage. We have extensive experience in helping designers in identifying risks and hazards, and in providing processes and recommendations to not only eliminate these hazards and risk. Our Systematic Design Risk Assessment process also enhances the functionality and provides cost savings to projects we have been involved with.



Health & Safety Compliance

Poor health, safety and risk management performance costs many businesses be it human suffering, financial, reduced productivity, or the inability to deliver services or products at full potential, keeping your workplace hazard free is an activity that no business can ignore

We can assist by:

- Undertaking surveillance audits and inspections of your sites
- Acting as a conduit dealing with regulatory authorities such as WorkSafe;
- Providing consultants as in-house resources to help with the

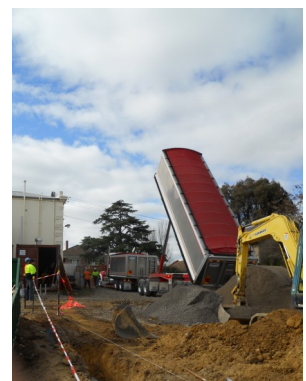
Risk Assessments

Functional Risk Solutions provide a range of risk management services that utilise a variety of assessment techniques. As a result we are able to recommend the assessment method most suited to the clients needs.

We partner with clients to develop a common understanding of their needs at an early stage of all projects. A Risk Management approach utilising tools and techniques can be tailored to meet their specific needs.

Functional Risk Solutions conduct a range of qualitative and semi-quantitative assessments and also facilitate risk assessment workshops for working groups in the areas of:

- Plant,
- Manual Handling,
- Hazardous Substance and Dangerous Goods,
- Noise,
- Property
- Confined Space



Health & Safety Management

Through our long involvement in the area it has become evident that effective OHS management leads to improved productivity. Healthy and safe employees are more productive and produce work of a higher quality. The prevention of incidents through improved OHS management has more benefits than just reducing injuries. It often provides a flow-on effect to a organisation's overall performance and profitability, both directly and indirectly.

Let us help you in the development of your safety management systems.



Construction Assistance

Gaining functional advice at a critical stage of a project is essential in achieving compliance and the design objectives. Functional Risk Solutions Pty Ltd provides timely, sound and achievable advice, as well as the necessary stakeholder communication and management to gain the results necessary.

Construction completion and compliance statements can be provided upon completion as required.

WHS / OHS Partnering

Functional Risk Solutions specialise in the provision of WHS/ OHS and risk management services and resources for short or long-term contracts. Our consultants can work with you at a frequency determined by you. Easy access to a single point of contact who knows your business, who has access to all our consultants' experience and expertise.

Outsourcing your WHS requirements to Functional Risk Solutions offers flexibility, cost savings and the assurance of support by skilled and experienced staff. Our involvement available a few days a month, to a full time resource on your site. We are able to shape our service to your business needs.

Our resources are generally available for immediate deployment.



Training & Presentations

The aim of all our training is to impress the principles of Health promotion, Risk Management and Safe Behaviour on participants and to assist them in applying the principles learnt in their work.

Our approach to training focuses on dealing with issues relating to culture, values, beliefs and perceptions; using safety as a vehicle, but with the objective of improving the organisation as a whole. Our Training programs are individually tailored to the specific needs and parameters of each organisation.

Project Experience



The following is a non-exhaustive list of projects our staff has positively contributed to as part of previous entities and affiliations:

Safety in Design

- Nillumbik Shire Council Plenty Road Depot redesign
- Shire Yarra Ranges Shire Nelson Road Depot redesign
- St Kilda harbour Master plan
- Sugarloaf Pipe Line Alliance
- 4 National Circuit Canberra
- Carrara Stadium Technical
- Department of Sustainability and Environment Bendoc Depot.
- 35-47 Coventry Street Southbank Vic
- Olivia Newton John Cancer and Wellness Centre (Austin hospital)
- University of Tasmania (Institute for Marine and Antarctic Studies)
- University of Technology Sydney Broadway building
- Regional Rail Link Package C Bid
- AECOM Safety in Design assessment
- Regional Rail Work package A SiD risk review workshop
- Abbotsford Chapel Refurbishment
- Rosamond Special School
- Williamstown Town Hall Redevelopment
- Waurm Ponds Shopping Centre
- Australian Centre of moving Image (ACMI) counter design

Health and Safety Compliance

- Australian Grand Prix Formula One for Australian Grand Prix Corporation 2005 & 2006 compliance audit
- Australian MotoGP for Australian Grand Prix Corporation 2005 & 2006 compliance audit
- CRT group (AS/NZS 4801) certification audit
- Multiplex Group (AS/NZS 4801) compliance audit
- South Gippsland Shire Council (SafetyMap v4 advanced level) compliance audit
- Investa Contractor OHS audits of various sites in Melbourne
- SHEMP Audits Nationally (Shell Australia)
- Victoria Police Project Safety compliance audits
- Internal (SafetyMap v4 advanced level) Pre certification Audits (Philip Morris Australia)

Health & Safety Management

- Bell Rock Risk Solutions (Fastrac food services) OHS Management System development
- Victoria Police Project Safety Management Plan Development
- Jones Lang LaSalle / ExxonMobil Project Safety Manager secondment
- Project Safety Advisor Coast to Coast tram upgrade Adelaide
- Project Safety Advisor Port Botany Rail yard upgrade
- Project Safety Advisor Benalla to Oaklands broad gauge track renewal
- Project Safety Advisor ARTC western line track renewal
- Site HSE Manger Proposed Victorian Desalination Wonthaggi (preliminary works),
- OHS advisor Port of Melbourne Corporation Channel Deepening (trial grouting works),
- Secondment at Port of Melbourne Corporation for the development of Integrated Safety & Environment Management System
- Safety and Risk Advisor for the Bureau of Meteorology ASLOS Tsunami Early Warning Project,
- Development of Safety Management Plan for construction of Ben Hammond Complex NT (Power & Water Corporation),
- Development of Safety Management Plan for the construction of Jacks Gully AWT Plant (WSN Environmental Solutions),
- Development of Mine Safety Reference Guide for Victorian WorkCover Authority,

Risk Management

- Safety and Risk Technical Lead Mitsubishi Heavy Industries Wind Turbine legislative and Australian Standards compliance assessment
- Facilitator and Risk Consultant for the Victorian Department of Transport terrorist threat assessment for Victorian freight network.
- Melbourne Water panel Safety and Risk Lead 55E ASP Safety Risk Assessment
- Common user Berth HS&E Activity and Facility Review for the Port of Melbourne Corporation
- Risk review of Plastic Lined Irrigation Channels (Futureflow),
- Development and Facilitation of Systematic Risk Assessment process for Australian Refined Alloys (Zinifex) Vic & NSW
- Development of risk management procedure for Zinifex Roseberry Mine
- Safety Technical lead for Emergency Management team Vic Roads for the West Gate Bridge Emergency response exercises.
- Development and delivery of Emergency Management Training course for South Gippsland Water
- Development and co facilitator for Emergency Management Desktop exercise for South Gippsland Water

Company Details



Company Name: FUNCTIONAL RISK SOLUTIONS PTY LTD

Australian Company Number: ACN 162 353 353

Australian Business Number: ABN 56 456 031 475

Areas Serviced: Australia Wide

Address: Suite 4, 981 North Road, Murrumbeena, VIC 3163

Postal Address: PO Box 4105, McKinnon, VIC 3204

Telephone: +61 3 9943 4348 / 1300 377 327

Facsimile: +61 3 8692 1033

Email: info@functionalrisk.com.au

Web Site: www.functionalrisk.com.au

Public Liability Insurance

Insurer: Lloyd's of London

Policy No.: GL1641

Professional Indemnity Insurance

Insurer: Lloyd's of London

Policy No.: 105694

Principal Consultant: Andrew Angelides

Telephone: +61 433 180 688

Email: andrew@functionalrisk.com.au

Key Personnel

Andrew Angelides

Safety & Risk Consultant

Qualifications

Advanced Diploma Work Health and Safety

Diploma of Occupational Health and Safety

Diploma of Quality Auditing

Certificate IV in Assessment & Workplace Training

Lead auditor OHS Management Systems

Lead auditor Food Safety Management Systems



Andrew is a health, safety and risk professional whose background includes working for industry and also within major multidiscipline consultancy firms. Andrew's experience is predominantly in the areas of project risk, operational risk, construction safety, system auditing, system development and implementation of both SafetyMap and AS4801.

Having worked across a variety of industries including, construction, retail, rail, mining, manufacturing, government, ports, transport and waste, Andrew brings a functional element to the consulting arena ensuring that solutions delivered are both practicable and beneficial to clients.

Andrew has completed numerous safety and risk projects to assist organisations in the development of practical management solutions in the areas of:

- Safety in Design
- Major projects construction / infrastructure
- Safety auditing and inspections
- Developing and implementing OH&S management systems
- Training programs
- Risk Assessments

George Xinos

Access Consultant

Qualifications

Accredited Access Consultant

Bachelor of Occupational Therapy

Advanced Diploma of Building Design
(Architectural)

Livable Housing Australia Registered Assessor

Affiliations

Accredited Member of the Association of
Consultants in Access, Australia (ACAA)

Member of Australian Rehabilitation Assistive
Technology Association (ARATA)



George is an Occupational Therapist, Building Designer and Project Manager with 15 years of experience in working across a number of services within the disability sector.

As an Occupational Therapist, George worked with people with a wide range of diagnoses and across all age groups. This included clients from paediatrics through to aged care, as well as clients with physical, sensory and cognitive disabilities.

Combined with an extensive background in Access Consultancy, Building Design and home modifications for people with a disability, George is well equipped in developing, managing and delivering specialist projects in complex environments and conditions.



