

Core Sample Trays



[www.discoverercoretray.com.au](http://www.discoverercoretray.com.au)

## Discoverer® Series 1 - Product Specifications



### B Core Tray

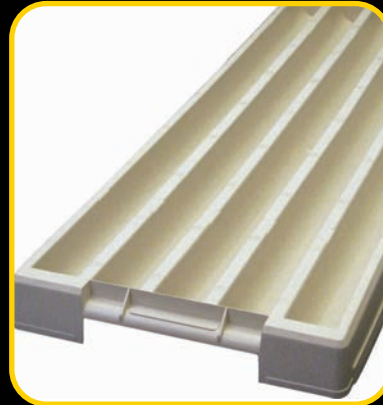
**Size:**  
Length 1065mm  
Width 385mm  
Height 60mm  
Diameter 38mm

**Core Capacity:**  
7 metres

**Colours:**  
Pastel Grey

**Weight:**  
approx 2.3kgs

**Pallet Qty:**  
Truck approx. 123  
Container\* approx. 129



### N Core Tray

**Size:**  
Length 1065mm  
Width 385mm  
Height 65mm  
Diameter 52mm

**Core Capacity :**  
5 metres

**Colours:**  
Beige

**Weight:**  
approx 2.3kgs

**Pallet Qty:**  
Truck approx. 102  
Container\* approx. 117



### H Core Tray

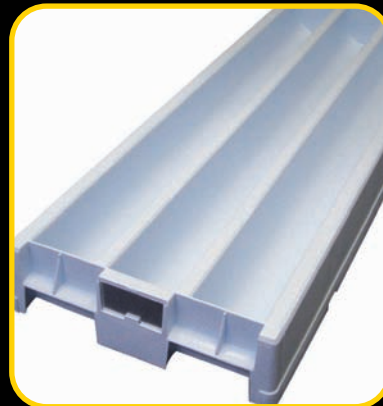
**Size:**  
Length 1065mm  
Width 385mm  
Height 84mm  
Diameter 65mm

**Core Capacity:**  
4 metres

**Colours:**  
Pastel Green

**Weight:**  
approx 2.3kgs

**Pallet Qty:**  
Truck approx. 75  
Container \* approx. 87



### P Core Tray

**Size:**  
Length 1065mm  
Width 385mm  
Height 107mm  
Diameter 86.5mm

**Core Capacity :**  
3 metres

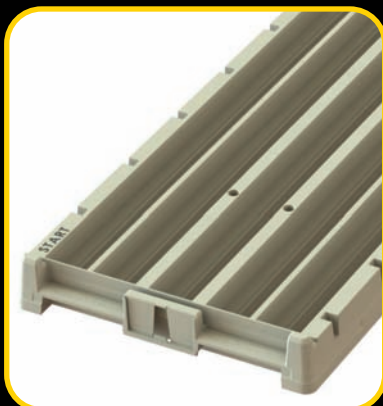
**Colours:**  
Pastel Blue

**Weight:**  
approx 2.8kgs

**Pallet Qty:**  
Truck approx. 60  
Container\* approx. 66

\*Container quantity is for a standard size container, add approximately 7% for a High Cube Container.

## Discoverer® Series 2 - Product Specifications



### N Core Tray

**Size:**  
Length 1065mm  
Width 385mm  
Height 67.5mm  
Diameter 52.5mm

**Weight:**  
approx 1.9kgs

**Core Capacity:**  
5 metres

**Colours:**  
Beige

**Pallet Qty:**  
Truck approx. 171  
Container\* approx. 186



### P Core Tray

**Size:**  
Length 1065mm  
Width 385mm  
Height 106mm  
Diameter 86.5mm

**Weight:**  
approx 2.4kgs

**Core Capacity:**  
3 metres

**Colours:**  
Pastel Blue

**Pallet Qty:**  
Truck approx. 120  
Container\* approx. 126



### H Core Tray

**Size:**  
Length 1065mm  
Width 385mm  
Height 81mm  
Diameter 65mm

**Weight:**  
approx 2.1kgs

**Core Capacity :**  
4 metres

**Colours:**  
Pastel Green

**Pallet Qty:**  
Truck approx. 132  
Container approx. 147

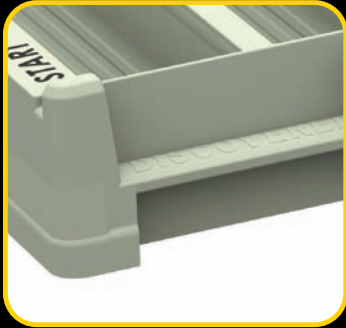


Photo courtesy of Ivanhoe Australia Ltd.



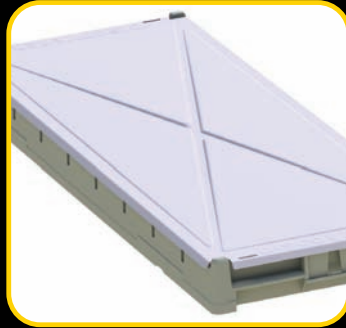
# Discoverer Series 1 & 2 - Product Features

The Discoverer® Core Trays - proven in the field since 1995. Designed and engineered for ease of use, safety in the field and to withstand Australia's harsh climate. Manufactured to exacting standards to give you the ultimate in core storage.



### 1. Built-in Handles

Built-in Handles on both ends of the trays provide safe and easy use when handling.



### 2. Custom Made Lids

Custom made Discoverer Lids, to further protect your core.



### 3. Clip-In Core Markers

Clip in Core Markers designed to optimize use of the tray. Colour coded to match trays. Top surface etched allowing you to record notes.



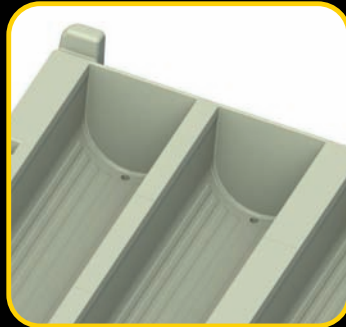
### 4. Full Depth Channel Height

Full Depth Channel height ensures the core sits below the ribbing, giving greater stability when stacking.



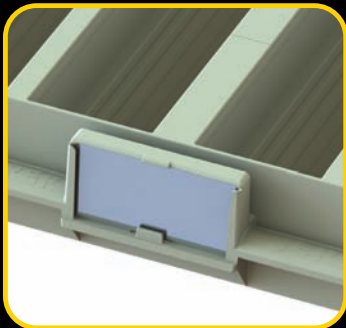
### 5. Bold Start Indicator

Bold Start Indicator gives clarity to drillers, reducing potential errors when logging the core.



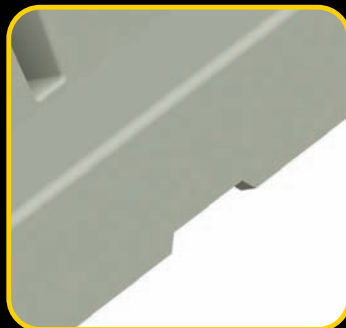
### 6. Drainage Holes

Drainage holes at both ends, helping your core to dry out and to remain stored in premium condition.



### 7. ID Tag Area

Built in ID Tag area for optional aluminium Tags provide for a permanent record of contents.



### 8. Strapping Slots

Strapping Slots ensure greater stability when palletised.

### 9. Excellent Longevity

Manufactured from the highest quality UV stabilized polypropylene available, giving excellent longevity, durability and peace of mind.

### 10. Colour Coded

The trays are colour coded, allowing for quick and easy identification of the different sizes both in storage and out in the field.



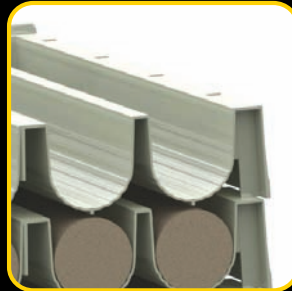
## Product Features Unique to Discoverer® Series 2

The new Stack and Nest Discoverer® Series 2 fits up to 100% more trays per pallet or container, leading to significant savings in freight. With additional features, the Discoverer® Series 2 takes core storage to new heights.



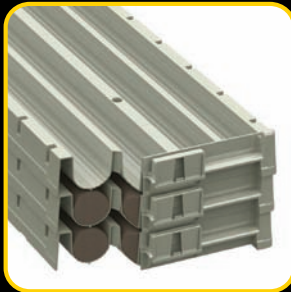
### 1. Nesting Capabilities

The trays nest neatly inside of each other when being shipped empty, maximizing the number of trays you can fit onto a pallet, leading to significant savings in freight.



### 2. Ribbing

Unique raised ribbed design improves drainage whilst making it easier to slide the core into the tray. This assists in the field, helping to retain the quality of the core.



### 3. Stacking Capabilities

The unique stacking design means that the trays stack perfectly on top of each other without the tray above touching the core in the tray below. This means that your core is stored without interference, helping to retain the quality of the core, whilst also giving you far greater stability when the trays are filled and stacked on top of each other.



### 4. Locking Device

Unique Discoverer® Locking Device gives superior stability when valuable pallets of core are moved around.



Nesting 10 High whilst empty



Stacked 10 High filled with core



Stacked 10 High with Lid

The original and the only plastic core tray with a proven performance since 1995, now even better.

For your nearest Distributor please contact :

**Yandina Plastics Pty Ltd**

t. +61 7 5446 8088

f. +61 7 5446 8688

e. [enquiries@coretrays.com](mailto:enquiries@coretrays.com)

w. [www.discoverercoretray.com.au](http://www.discoverercoretray.com.au)

32 Central Park Drive, Yandina QLD 4561



Photo courtesy of Ivanhoe Australia Ltd.

