

SERVICES WE PROVIDE

Environmental Consulting



Our environmental consultants will ensure you comply with Australian state and territory legislation and policies for site rezoning, re-development, property divestment, due diligence and commercial liability clean-up.

We offer best practice, cost effective and technically sound solutions to your environmental issues and obligations; performing environmental site assessments, groundwater assessments, environmental management and compliance of underground petroleum storage systems (including associated soil and groundwater assessment and validation works), environmental audit assessments and soil and groundwater remediation and waste management.

Our consultants also perform environmental air monitoring for dusts, particles and weather. Environmental noise assessments assess existing noise levels against environmental noise requirements; and modelling for air emissions and noise levels assess the impact from proposed premises or modifications to existing operations.

As a member of professional affiliations including the Australian Contaminated Land Consultants Association (ACLCA), the Australasian Land and Groundwater Association (ALGA) and the Australian Institute of Occupational Hygiene (AIOH), ESP has the knowledge and experience to aid with your air, noise, land or groundwater contamination problem.

ESP Environmental services include:

Environmental Site Assessments

- Site history reviews
- Preliminary environmental site assessments (Phase 1)
- Soil and groundwater detailed environmental site assessments (Phase 2)
- Acid sulphate soil appraisals and management
- Characterisation of contaminated soils and wastes for offsite disposal or reuse
- Remediation of contaminated soil and groundwater (Phase 3)
- Remediation Action Plans (RAP)
- Soil Management Plans

Underground Petroleum Storage Systems (UPSSs)

- Underground fuel storage tank (UST) compliance and removal management
- Environmental Protection Plans (EPP)
- Soil and groundwater assessment and remediation
- Soil vapour assessments
- Site validation assessments



Environmental Audits

- Environmental audits for land rezoning or EPA requirements
- Detailed soil and groundwater environmental site assessments
- Characterisation of contaminated soils and wastes for offsite disposal or reuse
- Remediation of contaminated soil and groundwater
- Clean-up to the extent practicable (CUTEP) groundwater remediation
- Remediation Action Plans (RAP)

Environmental Management

- Environmental Management Plans (EMP)
- Full range of High Volume Environmental Samplers and sampling regimes to comply with state and territory EPA, Australian Standard and US EPA Method and Compendium Method requirements
- Weather stations customised to measure atmospheric pressure, dry and wet bulb temperatures, wind speed and direction, solar radiation and rainfall
- Health & Safety Plans (HASP)
- Environmental noise assessment and prediction modelling

Occupational Health & Safety Consulting



Occupational Health and Safety (OHS) is a multi-disciplinary area concerned with protecting the health, safety and welfare of people engaged in working environments. As a secondary effect, occupational health & safety programs also seek to protect anyone (including members of the public) impacted by workplace environments and practices.

At ESP we believe in offering a practical, easy to understand approach to OHS for any industry type and size. We do this by using hands-on methods; working to support the employer and employees to achieve compliant, affordable and workable outcomes.

Positive results and satisfied clients verify the high standard of our work.

Our Certified Occupational Hygienists assess workplace exposure to hazardous dusts, gases, fumes, fibres and mists in accordance with Australian Occupational Exposure Standards (OES) and Short Term Exposure Limits (STEL).

Onsite evaluations measure specific workplace hazards, the potential for risk and develop systems of work that comply with Australian Standards, Safework Australia guidelines, company policy or international requirements.

ESP Occupational Hygiene services include:

OH&S Management Systems and Auditing

- Legal and regulatory compliance audits
- Health and safety policy
- Measurement and evaluation





OH&S Workplace Surveys

- Preliminary and detailed OH&S surveys
- Physical hazards (noise, radiation, light, thermal stress, traffic management)
- Chemical hazards (dusts, particles, gas vapours), including personal airborne monitoring
- Biological hazards (bacteria, moulds)
- Ergonomics assessments
- Falls prevention
- Manual handling issues
- Plant risk assessments, including saws and forklifts



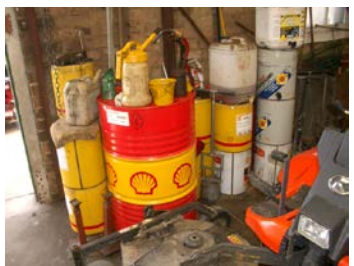
OH&S Risk Assessment and Management

- Hazard identification and risk assessment
- Control measures (Hierarchy of Controls) and Management Plans
- Safe Work Method Statements (SWMS) and Job Safety Analysis (JSA)



Dangerous Goods & Hazardous Substances Management

- Hazardous Substances risk assessments and exposure monitoring, including Chapter Hazardous Substances - acute toxins, prolonged exposure, corrosives, irritants, sensitizing agents and carcinogens
- Dangerous Goods risk assessments, registers, manifests and compliance audits, including Chapter Dangerous Goods - petrol, LPG, paints, pesticides and acids
- Material Safety Data Sheets (MSDS)
- Australian Standards: 1940, 3833, 1596 and similar assessments and audits
- Provisional Improvement Notices (PINs) compliance assistance
- Storage, handling, labelling, placards for Dangerous Goods & Hazardous Substances



Policy & Procedure Development

- Safe Work Policy and Procedures
- OH&S Workplace Procedural Policy
- OH&S Management Strategies
- Job Safety Analysis (JSA)
- Risk assessments using Risk matrix

OH&S Training

- Asbestos awareness
- Office safety
- Ergonomics
- Manual handling
- Noise
- Working alone
- Dangerous Goods & Hazardous Substances
- Staff training programs tailored to address local workplace issues

Members of the
**Australian Institute of
Occupational Hygienists**
and
**Safety Institute of
Australia**

Hazardous Materials Services



A tailored approach to client specific needs along with our state-of-the-art techniques has established ESP as a leader in asbestos identification and management planning.

Our qualified professionals advise and facilitate the implementation of practical risk management systems to negate exposure to hazardous substances.

ESP consultants conduct onsite inspections to identify and sample materials suspected of containing asbestos and other hazardous materials, and assess the likelihood of workplace activities damaging or disturbing suspected asbestos containing materials.

Samples obtained from site materials are returned to the ESP NATA accredited laboratory to determine the presence and type of asbestos. You will receive a comprehensive, site specific report detailing the location and type of hazardous materials identified and the remedial action to comply with regulatory requirements for workplace safety. You can then choose to integrate a site specific Asbestos Management Plan with ongoing business operations to mitigate workplace risks and train staff for improved workplace safety.

ESP Hazardous Materials services include:

Asbestos Analysis & Air Monitoring

- Asbestos Identification to AS 4964 – 2004 by Polarised Light Microscopy conducted on a range of building materials including:
 - Soils
 - Fibre reinforced cement sheet and panel boards
 - Mastics, sealants and waterproof membranes
 - Cladding, lagging and insulation materials
- Asbestos Fibre Counting to NOHSC: 3003 (2005) by Phase Contrast Microscopy to determine levels of asbestos fibre contamination in air.

Workplace Asbestos & Hazardous Materials Surveys

- Building/Workplace inspections for asbestos containing materials
- Building/Workplace inspections for hazardous materials

Management & Control of In-situ Asbestos Materials

- Customised Asbestos Management Plans to comply with OH&S legislation and associated regulations
- Review of workplace practices for the management and control of in-situ asbestos containing materials
- Review of workplace practices for the management of hazardous materials



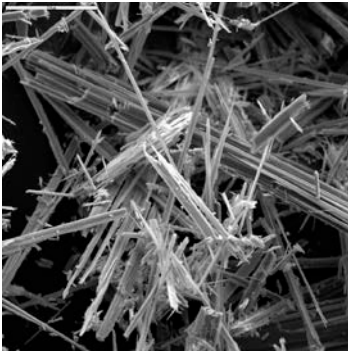
Project Management Asbestos Removal Programs

- Project management, scope of works and specifications for asbestos removal
- Visual inspection and Clearance Certificates following asbestos removal processes
- Asbestos airborne fibre monitoring during and following asbestos removal processes

Asbestos Contaminated Soil Assessments

- Site assessment to determine asbestos contamination in soil
- Remediation of asbestos contaminated soils, preparation of remediation action plans for the ongoing management of asbestos contaminated soil
- Environmental site assessments to determine other soil and groundwater contaminants

Laboratory Services



ESP maintains a fully equipped NATA accredited laboratory (No. 3110) compliant with *ISO/IEC 17025-2005 General requirements for the competence of testing and calibration laboratories*.

The ESP laboratory team conducts qualitative analyses of asbestos type in building materials and soil samples and measures the concentration of airborne asbestos fibres.

NATA endorsed reports can be issued within a half day of sample receipt.

