

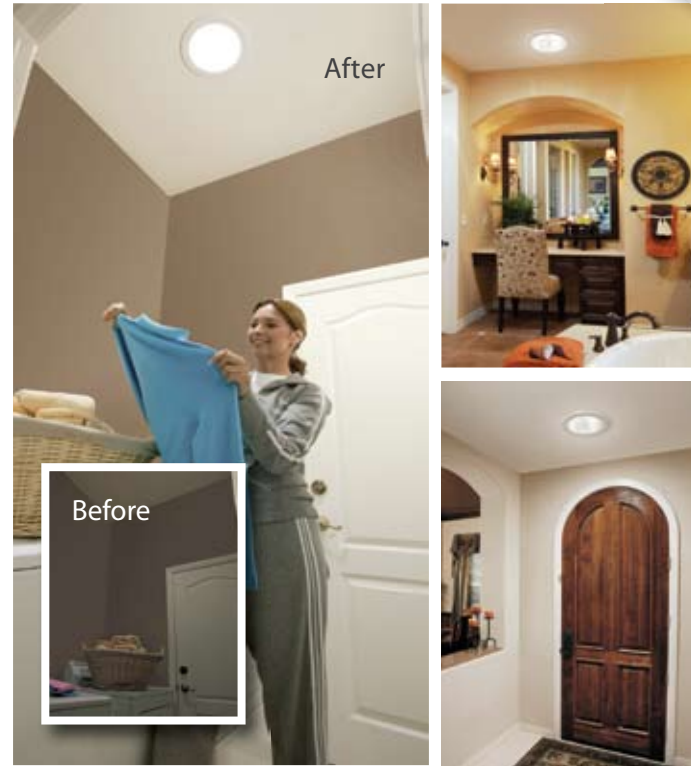
The Right Light for Every Room

The Brighten Up® Series transforms difficult to light and often forgotten rooms into extraordinary spaces filled with pure, natural daylight. Highly effective and simple to install, these models can transform dark interior rooms and light more expansive spaces when used in multiples, creating a unique architectural effect.

Model	Tube Size (diameter)	EDCS*	Light Coverage Area (residential)	Potential Tube Length
Solatube 160 DS	≈ 10 in (250 mm)	160 in ² (1032 cm ²)	150-200 ft ² (14-19 m ²)	20 ft+ (6 m+)
Solatube 290 DS	≈ 14 in (350 mm)	290 in ² (1871 cm ²)	250-300 ft ² (23-28 m ²)	30 ft+ (9 m+)

*EDCS (Effective Daylight Capture Surface) represents the surface area of the dome that collects and redirects sunlight. For comparison, a clear dome with no lens on a 10 inch tube system has an EDCS of 78.5 square inches.

- Ideal for:**
- Bathrooms
 - Hallways
 - Closets
 - Laundrys
 - Kitchens
 - Living Rooms
 - Dining Rooms
 - Home Offices



We offer a Solatube 330 DS for larger rooms. Available as special order.



Vusion™ Diffuser

OptiView® Diffuser

Diffusers

Two diffuser choices are designed with our proprietary lenses for highly effective light diffusion. Each features a sleek, low-profile dress ring in white. These attractive and stylish diffusers seamlessly integrate into most ceiling surfaces with no visible fasteners.

OptiView® Diffuser

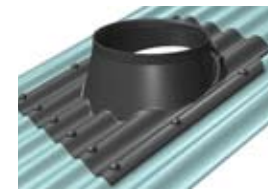
This technologically superior diffuser delivers crystal clear daylight and a unique view of the sky.

Vusion™ Diffuser

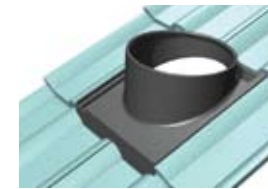
The fresh design of the Vusion diffuser harmonises with most any décor.

Flashings

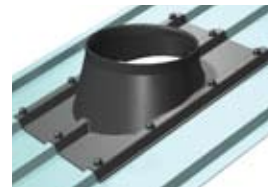
Flashing kits are available for all roof types and pitches. They are fabricated as a single, seamless piece to ensure leak-proof performance.



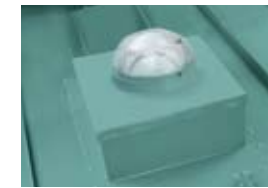
Corro



Tile



Trimdek



Curb Mounted Cap*

Special metal roof installation kit available upon request. *Available in 290 DS.

Accessories

Light Add-On Kit

The Light Add-On Kit provides the convenience of a switched light for night time use.

Universal Light Add-On Kit with Medium Screw Base accepts one 100 watt lamp for the 160 DS and 290 DS.

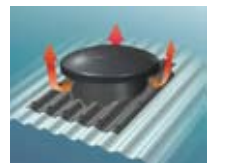


Ventilation Add-On Kit

The Solatube 160 DS is available with an optional Ventilation Add-On Kit. When combined with this innovative accessory, the 2-in-1 ceiling fixture minimises ceiling penetrations for a more attractive look.



Vent Unit with OptiView® Diffuser



Optional Ventilation Roof Cap

Daylight Dimmer*

Our proprietary variable butterfly baffle easily controls the amount of light entering a room with the convenience of a switch.

- Perfect for bedrooms, media rooms and offices.
- Wall mounted switch provides convenient low voltage control.



Daylight Dimmer Switch Kit (sold separately) includes DPDT switch, wall plate and 15 ft/4.5 m of cable. Multiple Daylight Dimmers can be controlled by one switch.

Solatube Australia

PO Box 3429
Tingalpa, QLD 4173
P: 13 16 19 | F: 1800 042 288
W: www.solatube.com.au

Solatube New Zealand

Homotech
PO Box 39146 |
Wellington Mail Centre
P: 0800 466 383 | F: +64 9525 2219
W: www.homotech.co.nz

Codes and Approvals

Rest assured that the Solatube Daylighting System can be used in your project without any hassles. Solatube Daylighting Systems have been approved by all major international building product approval agencies.





Part No. 951573 v1.5 ©Copyright 2008

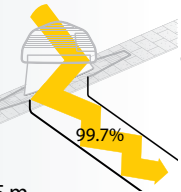


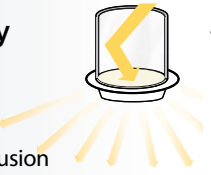
Solatube® Daylighting System

- 1 Raybender® 3000 Technology**

 - Patented daylight-capturing dome lens
 - Redirects low-angle sunlight
 - Rejects overpowering summer midday sunlight
 - Consistent daylighting throughout the day
- 2 LightTracker™ Reflector**

 - Patented in-dome reflector
 - Redirects low-angle winter sunlight
 - Increases light input for increased light output
 - Unsurpassed year-round performance
- 3 Spectralight® Infinity**

 - World's most reflective tubing
 - 99.7% spectral reflectivity
 - Purest color rendition possible
 - Transfers sunlight a phenomenal 50 ft/15 m
- 4 Dual Lens Array Technology**

 - Combines two lenses to provide complete daylighting customisation
 - The Diffuser Lens controls the light diffusion
 - The Effect Lens adjusts the light and offers choices to soften or warm the light color



Features vary by product model.