

straighten up

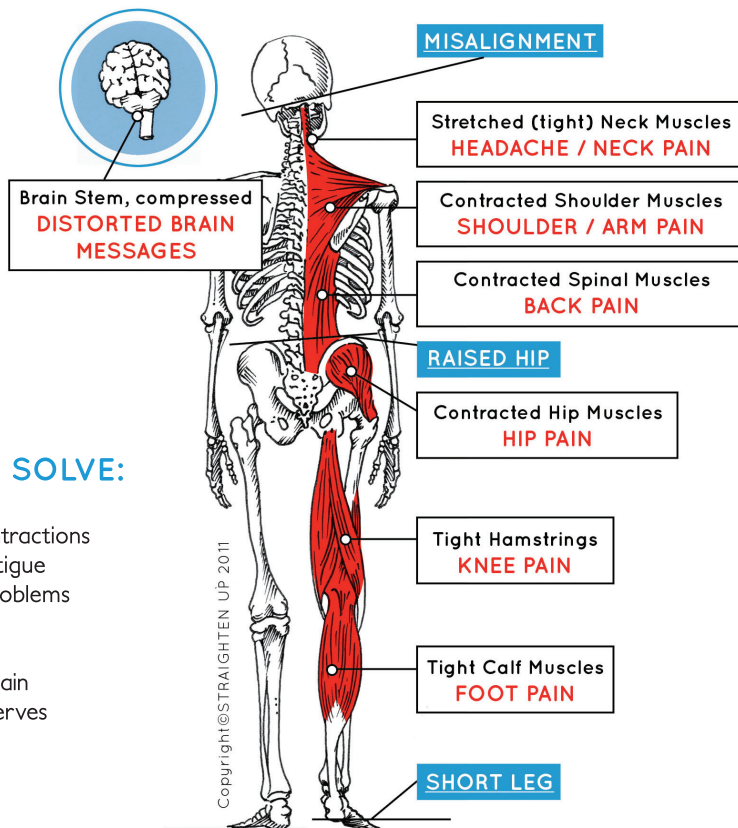
AUSTRALIA WIDE TREATMENTS



99% of people carry a misalignment of the Atlas bone or C1 vertebrae, the GATEWAY between MIND and BODY.

REALIGN THE ATLAS AND HELP SOLVE:

- Back problems
- A stiff neck
- Migraines and headaches
- Anxiety and depression
- Blood pressure
- Hypertension
- Twisted pelvis
- Knee pain
- Frozen shoulders
- Whiplash
- Muscle contractions
- Chronic fatigue
- Balance problems
- Tinnitus
- Scoliosis
- Shoulder pain
- Trapped nerves
- Vertigo.



BOOK TODAY ON

mobile: 0409084609

Fast Pain Relief For Necks & Backs Without Manipulation