



Security Screen Doors and Windows

Retractable Insect Screens

Aluminium Privacy Screens and Gates

Fire and Emergency Escapes and Screens

Diamond Grille Doors and Windows

Flyscreens

[spscreens.com.au](http://spscreens.com.au)

# *We're all about delivering quality across everything we do*

Security screens are an essential part of Australian living. From keeping unwanted insects and intruders out, to ensuring your precious family stay safe, they make sense for so many different reasons.

Problem is, as the demand for security screens increases, we've seen many new installation companies arriving on the scene, promising customers the world – and more often than not, failing to deliver. But that's where SP Screens is different.

## *We're unlike our competitors*

At SP Screens we understand that our reputation is defined by our success, which is why we only work with the industry's most reputable brands.

As an Authorised Expert, we partner with CommandeX, (SecureView Eclipx and Xceed) and other quality brands because we only want to be associated with the very best products available on the market.

Not only will these products resist any physical attack, but with their smooth, sleek design that blends effortlessly into any façade, they look great in any home too.

In short, we want all our customers to enjoy ultimate peace of mind, without compromising on the quality of product that they choose.

Since we started we've helped thousands of families with their security solution needs. On the next page are just some of the reasons they like to work with us.

Our team has over 25 years of industry experience and will help you choose the products that best match your needs.





### **Better quality**

With access to an unsurpassed range of leading products and brands.



### **Personalised service**

We don't see you as just another number, but a real customer with unique security needs.



### **Competitive prices**

Because of the strong relationships we have built with the industry's leading vendors, we are able to offer our products at a great price.



### **Extra peace of mind**

Giving you additional reassurance with an 11-year warranty on all SecureView Eclipx products and a 7-year warranty on all Xceed products.



# *Packed with impressive features throughout*

We've recommended SecureView to thousands of Australian customers who are looking for a superior and stronger security screen.

## *Here's why SecureView is our preferred choice:*

### **Built with the highest-grade stainless steel**

T316 marine grade stainless steel is a higher grade than the lower cost 304 used in other products. This means SecureView uses a wire with a higher Mpa (tensile strength) than what is used in the 304 alternatives.

### **Better resistance to harsh, salty environments**

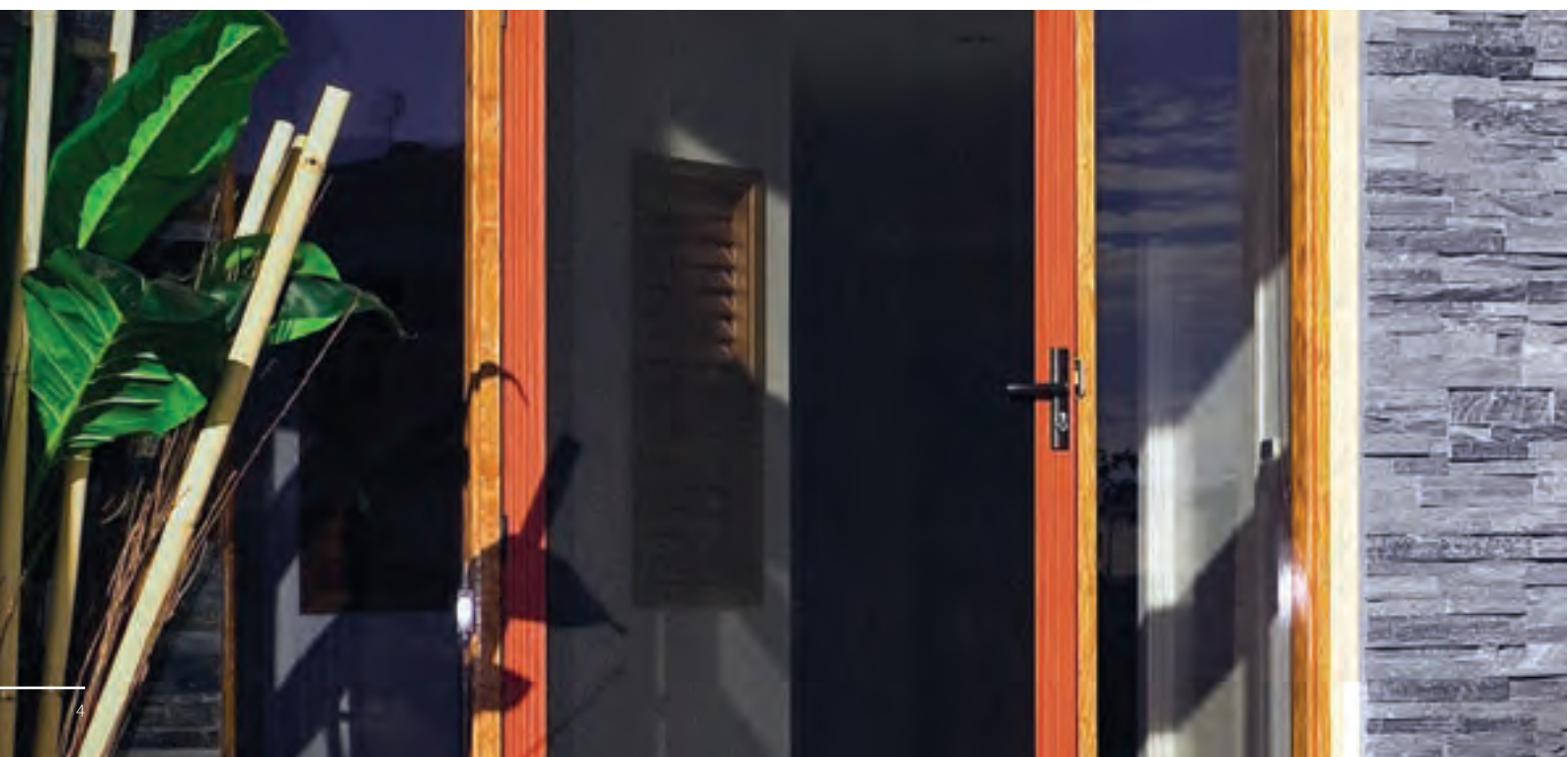
Many of our customers live within 15km of the coast, so it's important to have security screens that come with the greatest corrosion resistance. Made from the highest marine grade stainless steel, SecureView 316 is proven to have fewer issues than 304, especially when it's used close to surf and in high humidity areas.

### **Featuring a patented chemical bonded fixing system**

CommandeX developed a fixing system that eliminated the need for screws and rivets. This was developed for both its aesthetic qualities but also to further reduce the corrosion process. The system uses 3m VHB™ chemical bonding around the entire frame rather than just where the rivets are. This chemical bonding is the same product used on commercial aircraft wings, skyscrapers and even the roof of T5 at Heathrow Airport, UK.

### **Colour match any SecureView screen to your home**

With over 26 stocked colours to choose from, we will help you select the right colour to blend seamlessly into your home. And if your colour is not stocked, we can colour match to the Dulux Colour Range. Simply chat to a friendly SP Screens Sales Representative for advice on the best colour for your property.



### A high quality product that offers unrivalled versatility

Whether you are looking for a security screen solution for your home, office or somewhere else, SecureView Security Screens are available in a wide range of applications, including:

- Hinged and sliding doors
- Fixed and sliding windows
- Casement, awning and double hung windows
- Fire and emergency exits
- Pet doors
- Shop fronts
- Cyclone screens
- Outdoor room extensions

### *And a level of performance that passes the most stringent testing procedures*

CommandeX is committed to excellence and ensures their products can outperform the harshest Australian conditions, they are required to pass a range of stringent scientific testing procedures.

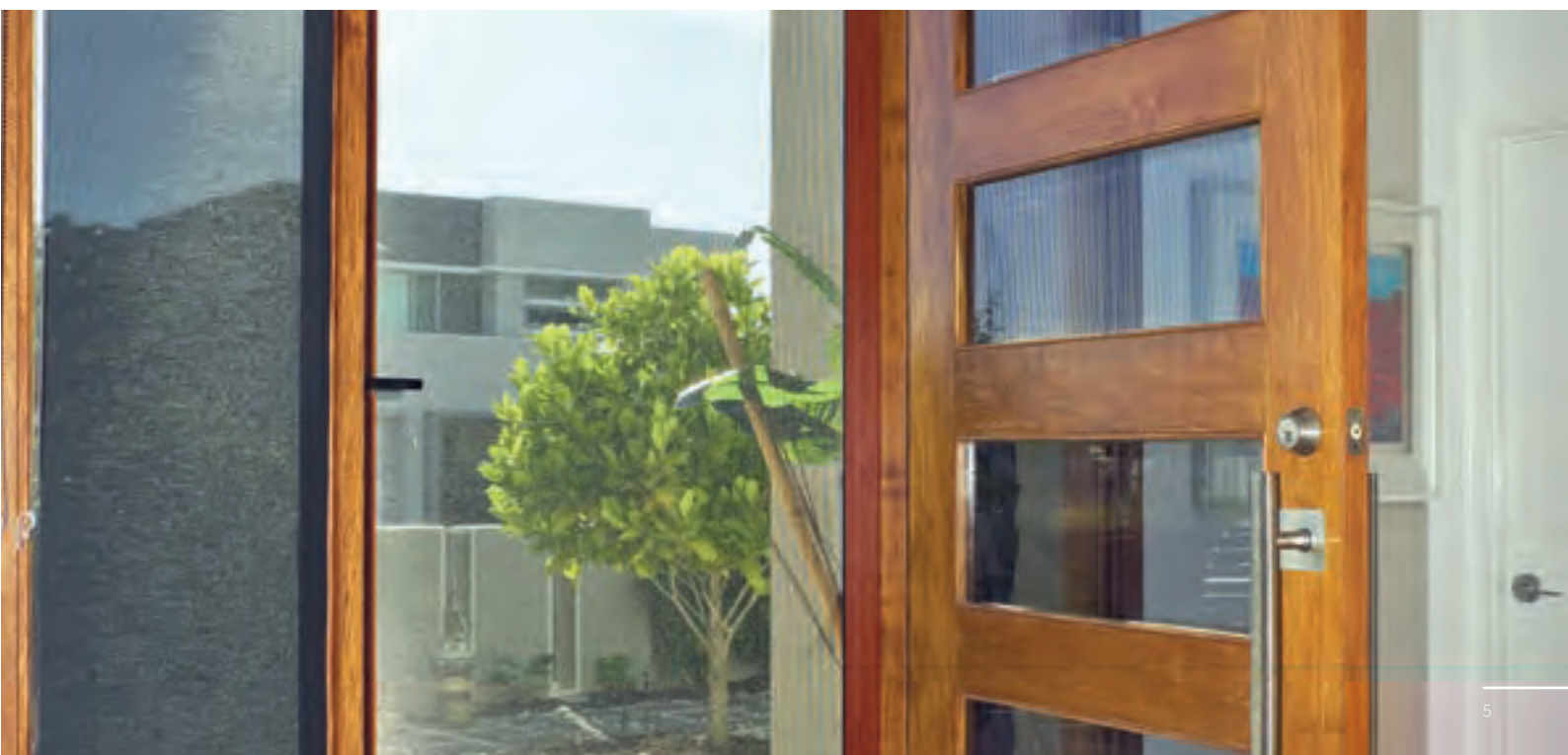
CommandeX products are regularly tested by AZUMA Design & Testing, one of the only NATA approved test labs in the country.

We're delighted to say that SecureView security doors and window screens passed the following AS tests with flying colours.

- Knife Shear Test (AS5039 – 2008)
- Impact Test (AS5039 – 2008)
- Anti-Jemmy Test (AS5039 – 2008)
- Pull Test (AS5039 – 2008)
- 10,000 Hour Salt Spray Tests – (AAMA 2605.05 Section 7.8.2)
- Cyclone Screen Test – (2010: AS/NZS1170.2)
- Aluminium Frame Tests – (AS/NZS1866:1997 & AS3715 –20020) 60603 T5 powder coated to a minimum thickness of 60um
- Stainless Mesh Tests – (AS3715-2002, AAMA2603-05, AAMA2605.05, AS2331/ISO2360, ASTM D2794, AS3715, ISO1519, JIS Z2241, ASTM E1086)
- Bush Fire Protection – (AS3959-2009; (BAL) 12.5,19,29,40)
- Fire Attenuation – (AS1530.4-2005, Appendix B7)
- Cyclone Screen Test – (2010: AS/NZS1170.2)

### Australian Standards Test **SecureView** **Xceed**

	Impact	Knife Shear	Jemmy	Pull
Hinged Door	✓✓	✓✓	✓✓	✓✓
Sliding Door	✓✓	✓✓	✓✓	✓✓
Fixed Window	✓✓	✓✓	✓✓	✓✓
Hinged Window	✓✓	✓✓	✓✓	✓✓
Sliding Window	✓✓	✓✓	✓✓	✓✓









# Choose the safest way to keep your kids safe

According to Kidsafe NSW, one child falls from a house window or balcony every week in Australia, with children aged one to five years old most at risk.

Sadly, many falls result in serious injury and occasionally death. And with an increasing number of people living in multi-storey houses and apartment blocks, parents now need to be extra vigilant to ensure their own children are not at risk of falling.

## *Enjoy extra peace of mind with our choice of leading fall-safe screens*

At SP Screens the safety of our customers is our number one priority. Which is why we only offer the kind of industry leading products, which give every parent the peace of mind they crave, while ensuring every child feels safe when playing at home.

Designed to comply with BCA standards, where any fitted screen must be able to withstand 25kg of pressure in three different points, we currently offer the following fall-safe products:



### **Xceed Fall-safe**

A secure, cost effective and great looking way to keep your children safe and bring essential airflow and ventilation into your home, Xceed Fall-safe Screens are made with hardened aluminium sheets, and incorporate the famous CommandeX patented fixing system for unsurpassed strength and durability.



### **SecureView Eclipx 316 Stainless Steel**

SecureView Eclipx Marine Grade Security Screens can also be fitted as a fall-safe screen. This is recommended for coastal regions, homes in bush fire zones or within 15km from the water. 316 Stainless Steel is known to offer greater corrosion resistance when used in harsh salty environments. And as 80% of Australians live near the coast, this cannot be ignored.

#### **DID YOU KNOW...?**

Most window accidents happen in the family home due to a number of reasons:

Kids climbing on furniture and pushing out insect screens or opening a window

Kids jumping on a bed near an open window

One sibling pushing another

Kids sitting on a window sill, reading or looking out, or simply losing balance



SecureView Eclix Hinged Door (Wood Look)



SecureView Eclix Sliding Door



Retractable Flyscreen



SecureView Eclix Fixed Window (Wood Look)



SecureView Eclix Fire Escape



SecureView Eclix Double Sliding Door



## *Highly effective fly and insect screens that integrate seamlessly with your home*

As part of our commitment to offering the best quality screen products on the market, we are proud to offer durable and stylish retractable and pleated insect screens.

### *Setting the standard in retractable and pleated insect screens*

A real favourite among Australian homes that have Bi-fold doors, French doors, Stacker doors, Pivot doors, Awning windows and Casement windows. Our retractable and pleated insect screens use a superior design system combined with an extra strong, durable mesh that ensures they are engineered to last.

You can trust SP Screens when it comes to keeping flies and insects at bay.

### *Pick the system that works best for you*

#### **Standard Retractable System**

A system that allows you to roll out the screen when you need it, and roll it away when you don't. It will gently retract into the cassette which blends seamlessly with your windows and/or door frames. Retractable insect screens come with a 7-year warranty and are available as either a standard soft close system or a multi-lock system.

The multi-lock soft close system enables the screen to be fixed part way along the screen opening so it can be left partially open. Perfect for when you wish to create a small opening for people and pets to go in and out.





### Pleated Insect Screens

A pleated screen works in the same way as a concertina: by using the folds to neatly stack the mesh back into itself. When the screen is extended, a series of tensioning cords keep the mesh in position. SP Pleated Insect Screens can span up to an impressive nine metres with a double screen, and four and a half metres for a single screen.

#### *Affordable and easy to maintain*

SP Retractable and Pleated Insect Screen Systems are not only affordable, but super easy to maintain as the components and mechanisms can be accessed with no difficulty at all. This ensures you can clean and service your screens, keeping them in great condition for longer.

#### *Choose from a range of styles and sizes*

To cater for the many different sizes and styles of home doors and windows, SP Retractable and Pleated Insect Screens can be fitted in a variety of different sizes to suit individual needs. Our retractable screens range from extra small (suitable for screens up to 650mm) to extra large (suitable for screens up to 3200mm). Pleated screens can be fitted to slide up or slide across and can be fitted to screen large areas.

#### *In a colour that's as individual as you are*

SP Retractable and Pleated Insect Screens are available in a range of standard colours. If you require a special colour, we have a range of finishes that are available on request. Simply choose from the Dulux® or Interpon® powder coating charts.

*Standard colours available for all systems include:*



White



Clear Anodised



Black



Primrose

A friendly SP Screens Sales Representative can help advise the best Retractable Fly Screen for your property.

# Traditionally designed doors, which are built to last

Steel doors allow you to add your own personal style touch to your home. And at SP Screens we specialise in the supply of federation and colonial style steel doors.

These traditional, ornate doors not only give an authentic nod to the past, but they are made with superior toughness and durability; providing you with the ultimate security and reassurance.

## *Make a big statement in your home*

At SP Screens we have a range of designs and colours available, and we can easily custom make your steel door to match your individuality.

With over 30 Designs to choose from, speak to your local SP Screens Sales Representative for advice on choosing the right design for you.

### KEY FEATURES AT A GLANCE

Powder coated to your choice of colour

Viro latch and deadlock

Door fitted within a steel frame

Fully welded heavy duty hinges

Internal - 12 x 12mm solid steel bar

Charcoal fibreglass fly mesh

Quality brass scroll handles

5 lever mortice lock

Anti-jemmy cover plate

Tubular Frame 25 x 25 x 2.5mm RHS steel

All work hot dipped galvanised

Some popular designs include:



Balmain



Bondi



Bundeena



Casula



Hawthorn



WW



Katoomba



Leichardt



Lindfield



Paddington



Rosehill



Wentworth





## *A great value safety solution for any type of home*

The ideal entry point for reliable home security. Diamond Grille's strength comes from its distinctive diamond mesh pattern. Made from 7mm aluminium, the grille is pressed into an aluminium frame and then finished with a flywire insert.

### *Keeps more than just bugs out*

For added strength, the grille is riveted at regular spacing around the entire frame. The end result is a safety door that not only keeps bugs out, but unwanted intruders too.

### *Economical and reliable at the same time*

The popularity of Diamond Grille safety screens is largely due to their cost effectiveness. Considering its impressive performance, it's a great value option that has been proven to be an excellent home security solution when fitted with a triple lock.

### *Available in many colours, shapes and sizes*

Our Diamond Grille Safety Screens come in a variety of mesh finishes and full colour range to match your décor. They also come in a wide range of applications to perfectly suit your requirements, including:

- Single-hinged doors
- Double-hinged doors
- Single sliding doors
- Double sliding doors
- Multi-stacking sliding doors
- Fixed window grilles



## *We also stock an extensive range of modern, affordable insect screens*

Flies, Insects and Bugs are a very real problem in Australia, and without added protection, they can make your life at home less than comfortable. But there is a cost effective and convenient way to ensure this doesn't happen.

### *Welcome the cool breeze in, while keeping insects out*

At SP Screens we stock a great choice of fly and insect screens that are not only functional and stylish, but they won't ruin that amazing view you have outside either. What's more, they also act as a great deterrent for pieces of debris – such as leaves, rubbish, and so on – which can sometimes get inside your house when doors or windows are left open.

### *We quote, measure and install*

Whether you are building a new home, renovating an old one, or just need to keep the bugs out, our expert team can help you determine the most cost effective screening solution. And once you're happy they'll measure and install each screen to ensure a perfect fit every time.

### *Custom made for your convenience*

Flyscreens are perfect for the Australian environment, and at SP Screens we can custom make and measure them for the following applications:

- Single hinged doors
- Double hinged doors
- Single sliding doors
- Double sliding doors
- Multi stacking sliding doors
- Window screens

### *We offer a choice of flyscreen mesh so you can select the screen most suited to your individual needs:*

- Fiberglass Mesh – Standard for most flyscreens
- Pet Proof Mesh – A bit tougher than fiberglass and ideal for pet owners
- Bushfire Approved Mesh – Ideal for households looking for a stronger security screen, or requiring additional window safety





## *Privacy screens and gates add privacy to your home and yard*

A sleek aluminium slat system that can be installed as a screen, fence or gate in your yard to provide privacy for your home by screening your family from the street or the neighbours.

Our professional installations offer a compelling alternative to wasting your weekends on DIY projects. Forget visiting the hardware store for flimsy, ill-fitting, inferior aluminium slatted screens that take days to install.

Our professional team can help you choose the privacy screen or gate that's perfect for your home and ensure a solid, beautiful result without you lifting a finger. Offering the flexibility to choose almost any colour and size at whatever slat spacing you choose with a sleek design which cleverly hides all ugly screws from sight.

*Aluminium slatted screens can be used to provide privacy and cover for a range of scenarios around the home:*

- **Brick pier infills** – Ideal for pier infills adding modern style and privacy.
- **Fencing and gates** – To keep your home and/or pool area safe and secure.
- **Deck and/or balcony areas** – So you can relax and enjoy complete privacy when you're outside.
- **Utility covers** – Including pool filter boxes, bins, air conditioning units and/or gas bottles.
- **Screening in carports and patio enclosures** – Providing extra screening and privacy.
- **Window screens** – Giving you privacy from neighbouring houses and the sun outside

### *Designed for impact and built to last:*

- Professional installation
- Engineered and constructed to stand the test of time.
- Reinforced screwed fixing – Keeping your screen super secure, long-lasting and withstanding of the elements.
- 11-year warranty
- Superior Quality Accessories - We only use the highest quality hinges, latches and locks from reputable suppliers on all our privacy screens and gates.



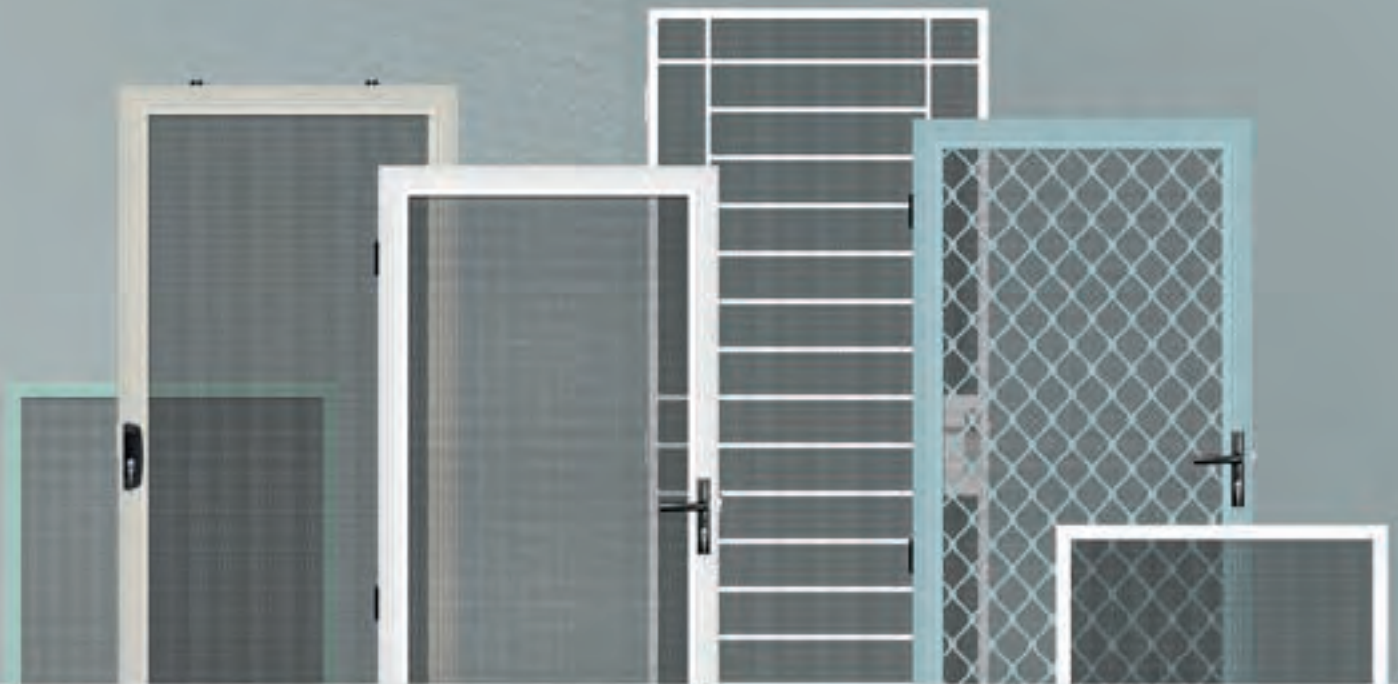
Its easy to book a free quote online at

[spscreens.com.au](https://spscreens.com.au) 

You'll have a choice of days and times and  
we'll contact you to confirm your booking.

**1300 939 700**

[salesupport@spscreens.com.au](mailto:salesupport@spscreens.com.au)



*\*Product range may vary based on location.*

Your local representative: