

**HOT WATER
SYSTEMS**

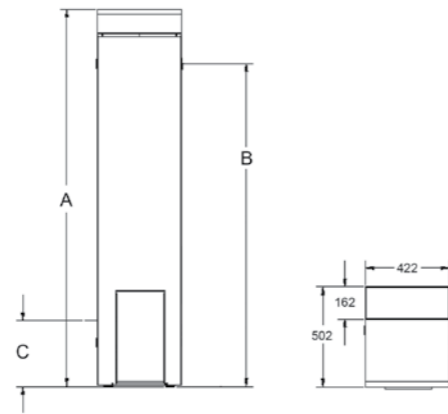
THERMANNTM

www.thermann.com.au

GAS HOT WATER SYSTEM



THE THERMANN 4 STAR GAS HOT WATER HEATER CAN SUIT ALMOST ANY FAMILY TYPE. WITH AN ADJUSTABLE THERMOSTAT FOR SAFETY AND EFFICIENCY IT ALLOWS YOU TO BE IN CONTROL OF YOUR OPERATING COSTS AND PERFORMANCE. THE UNIT HAS A SMALL FOOTPRINT WHICH MAKES IT IDEAL FOR REPLACING A 3 STAR CHANGEOVER.



SPECIFICATIONS

Gas Tank

Measurements	135L
Capacity (L)	135
Net Weight Empty (kg)	72
Relief Valve Pressure (kPa)	1400
Gas Consumption (MJ/h)	135NG = 23.5 135LPG = 22.5

Dimensions (mm)	135L
Height (A)	1601
Hot Water Outlet (B)	1327
Cold Water Inlet (C)	221
Gas Inlet	336

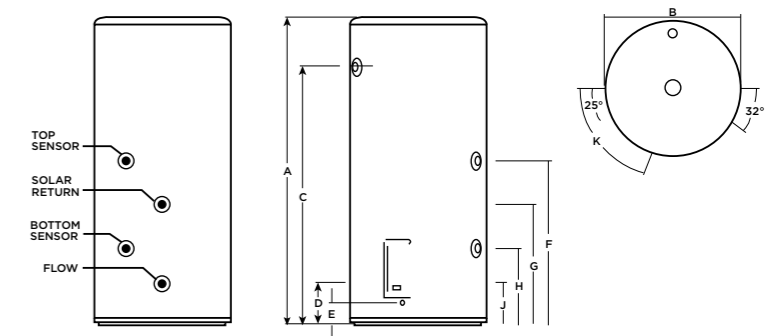
Selecting the right unit for you

	135L
No. People	3-5

ELECTRIC HOT WATER SYSTEM



THERMANN ELECTRIC STORAGE HOT WATER UNITS ARE AN INSULATED STORAGE VESSEL EFFICIENTLY STORING HOT WATER, READY FOR USE, WHEN YOU NEED IT. THE THERMANN RANGE OF ELECTRIC WATER HEATERS OFFER SOLUTIONS IN THREE DIFFERENT SIZES TO SUIT YOUR NEEDS. UPGRADE THE TANK TO SUIT SOLAR WHEN YOU'RE READY.



SPECIFICATIONS

Electric Tank

Measurements	80L	125L	160L	250L	315L	400L
Total Height (A)	925	1062	1317	1444	1754	1704
Total Diameter (B)	490	532	532	617	617	705
Outlet Height (C)	750	857	1112	1211	1521	1445
Inlet Height (D)	175	206	206	195	195	219
Electrical Entry (E)	80	116	116	125	125	150
Top Sensor (F)	N/A	N/A	N/A	769	858	832
Solar Return (G)	N/A	N/A	N/A	565	565	544
Bottom Sensor (H)	N/A	N/A	N/A	356	356	347
Flow (J)	N/A	N/A	N/A	195	195	219
Element Angle (K)	72°	72°	72°	72°	72°	72°
Storage Capacity	90	128	128	259	322	415
Hot Water Delivery	80	125	160	250	315	400
Net Weight Empty (kg)	40	48	59	72	93	115
Element Size (kW)	3.6	1.8, 3.6	2.4, 3.6	3.6	3.6	3.6

Relief Valve						
Pressure (kPa)	1000	1000	1000	1000	1000	1000
Max Inlet Pressure						
Without an ECV (kPa)	800	800	800	800	800	800
With an ECV (kPa)	650	650	650	650	650	650

Selecting the right unit for you

	250L	315L	400L
Inlet/Outlet	Left, solar upgradeable	Left, solar upgradeable	Left, solar upgradeable
No. People (continuous)	3-5	4-6	5-9
No. People (off peak)	1-3	2-4	4-6
	80L	125L	160L
Inlet/Outlet	Dual Handed	Dual Handed	Dual Handed
No. People (continuous)	2-3	3-4	3-5
No. People (off peak)	0	0	1-3



Cylinder

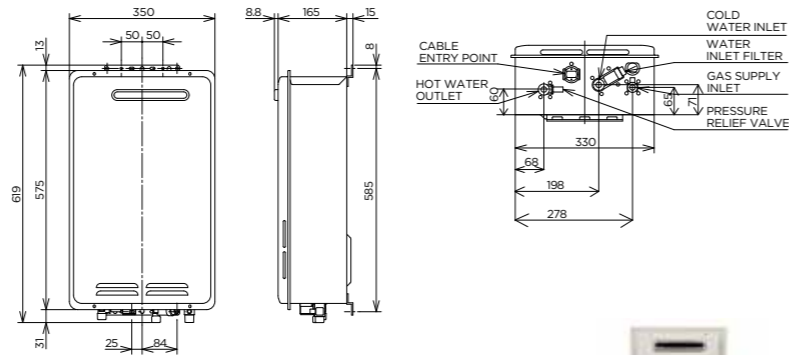


Parts and labour

CONTINUOUS FLOW HOT WATER SYSTEMS



THE THERMANN GAS CONTINUOUS FLOW SYSTEM HEATS WATER AS IT FLOWS THROUGH A COILED PIPE AROUND A GAS BURNER, WHICH MEANS YOU'LL NEVER RUN OUT OF HOT WATER.



Kitchen Controller



Bathroom/Ensuite Controller



Recess Box Powder

SPECIFICATIONS

Continuous Flow

Measurements	16L	20L	26L
Nominal hourly gas consumption (MJ/h)	125	160	200
Test point pressure NG (kPa)	0.4	0.56	0.68
Test point pressure LPG (kPa)	0.4	0.61	0.7
Minimum working pressure (kPa)	260	260	210
Maximum working pressure (kPa)	1200	1200	1200
Input voltage single phase 50Hz (v)	240	240	240
Maximum output current (A)	0.42	0.45	0.47
Inlet gas connection male thread	R3/4" (20mm)	R3/4" (20mm)	R3/4" (20mm)
Cold water connection male thread	R1/2" (15mm)	R1/2" (15mm)	R3/4" (20mm)
Hot water connection male thread	R1/2" (15mm)	R1/2" (15mm)	R3/4" (20mm)
Relief valve pressure setting (kPa)	1400	1400	1400
Weight dry (kg)	16	16	17
Dimensions (DxWxH mm)	165x350x575	165x350x575	165x350x575

SAIG Approval certificate no. GSCS20021. Watermark Certificate of compliance WMKA 00506

Accessories	Code
Kitchen controller with 15m cable	9504157
Bathroom controller with 15m cable	9504158
Ensuite controller with 15m cable	9504159
Recess Box Gal	9504553
Recess Box Powder	9504555
Locking Bracket	9504554

Selecting the right unit for you

	16L	20L	26L
No. Bathrooms	1	1-2	2-3
Energy Rating	5.2 stars	5.3 stars	5.8 stars
Capacity @ 25° rise (L/min)	16L	20L	26L
Capacity @ 40° rise (L/min)	10	12.5	16.25
Gas Type Available	NG, LPG	NG, LPG	NG, LPG



Heat Exchanger

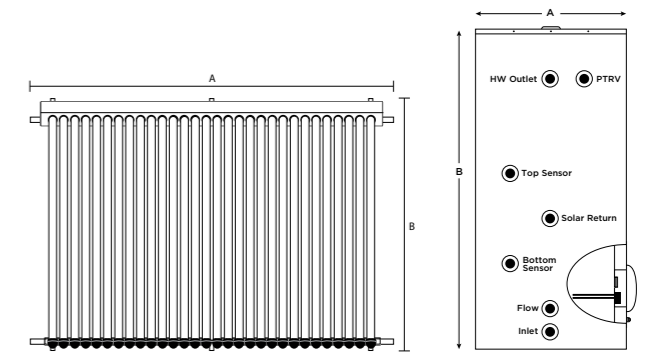


Parts and labour

EVACUATED TUBE SOLAR ELECTRIC BOOSTED



THERMANN EVACUATED TUBE SOLAR ELECTRIC BOOSTED SYSTEMS HARNESS THE SUN'S ENERGY TO HEAT YOUR WATER. AN ELECTRIC ELEMENT IN THE TANK PROVIDES BACK UP IF NEEDED, ENSURING PEACE OF MIND, WHILST ALSO REDUCING YOUR RUNNING COSTS.



SPECIFICATIONS

Electric Boosted Tank

Measurements (mm)	160L BOT	250L BOT	250L MID	315L BOT	315L MID	400L BOT	400L MID
Tank Diameter (A)	540	648	648	648	648	731	731
Tank Height (B)	1494	1388	1388	1682	1682	1731	1731
HW Outlet	1292	1167	1167	1470	1470	1474	1474
PTRV Port	1292	1167	1167	1470	1470	1474	1474
Top Sensor Port	1048	759	759	841	841	841	841
Solar Return Port	804	564	432	564	509	564	564
Bottom Sensor	489	369	303	369	342	369	369
Solar Flow	174	174	174	174	174	174	174
Cold Water Inlet	74	74	74	74	74	74	74
Dry Weight (kg)	61	86	86	98	98	130	130

Roof Collector

Collector	Measurements (mm)		Dry Weight	
	Width (A)	Length (B)	WO/Tubes	W/Tubes
10 Tubes	945	2025	10.5kg	40.5kg
22 Tubes	1636	2025	20kg	85kg
30 Tubes	2240	2025	24kg	112kg

Dry weights based on 3 track flush mount frame.

Selecting the right unit for you

	160L	250L	315L	400L
No. People	1-2	3-5	4-6	5-9
No. Tubes	10	22	30	44



Tubes



Tank

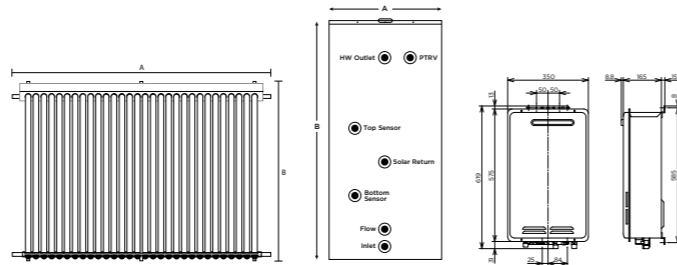


Parts and Labour

EVACUATED TUBE SOLAR GAS BOOSTED



THERMANN EVACUATED TUBE SOLAR GAS BOOSTED SYSTEMS OFFER RELIABILITY AND EFFICIENCY. PASSIVE SUN TRACKING MEANS MORE OF THE SUN'S RAYS ARE CONVERTED TO USABLE HOT WATER THROUGHOUT THE DAY - REDUCING YOUR POWER BILLS. WITH THE GAS BOOSTED CONTINUOUS FLOW UNIT, YOU'LL NEVER RUN OUT OF HOT WATER, NO MATTER THE WEATHER.



SPECIFICATIONS

Gas Boosted Tank

Measurements (mm)	160L GAS	250L GAS	315L GAS	400L GAS
Tank Diameter (A)	540	648	648	731
Tank Height (B)	1502	1389	1682	1721
HW Outlet	1300	1167	1470	1464
PTRV Port	1300	1167	1470	1464
Top Sensor Port	1056	953	1196	1207
Solar Return Port	812	740	922	950
Bottom Sensor	497	457	548	562
Solar Flow	182	174	174	174
Cold Water Inlet	82	74	74	74
Dry Weight (kg)	61	86	98	130

For 26L Gas Continuous Flow specifications and warranty information refer to page 2.

Roof Collector

Collector	Measurements (mm)		Dry Weight	
	Width (A)	Length (B)	WO/Tubes	W/Tubes
10 Tubes	945	2025	10.5kg	40.5kg
22 Tubes	1636	2025	20kg	85kg
30 Tubes	2240	2025	24kg	112kg

4 Dry weights based on 3 track flush mount frame.

Selecting the right unit for you

	160L	250L	315L	400L
No. People	1-2	3-5	4-6	5-9
No. Tubes	22	22	30	44
Gas Booster	26L	26L	26L	26L



EVACUATED TUBE SOLAR HOW IT WORKS

STEP 1

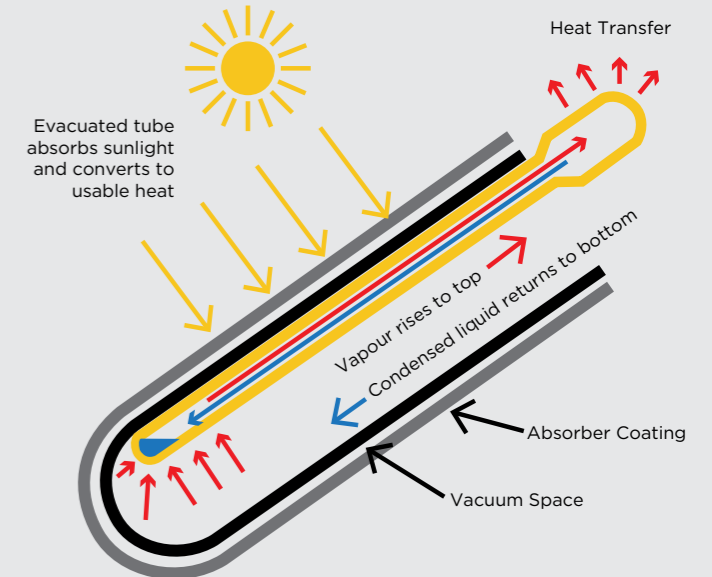
The sunlight strikes the dark absorber coating inside the tube.

STEP 2

The heat pipe transfers the heat up to the copper header pipe location in the insulated manifold box.

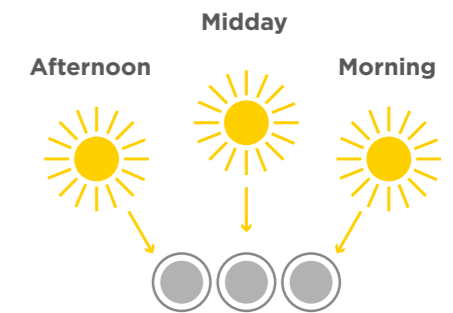
STEP 3

A circulator moves water from the storage tank to the copper pipe warming the water. The solar heated water is then pushed down into the storage tank for use. Anti-frost is built in to the Thermann system to ensure solar hot water can be provided even in cold regions.



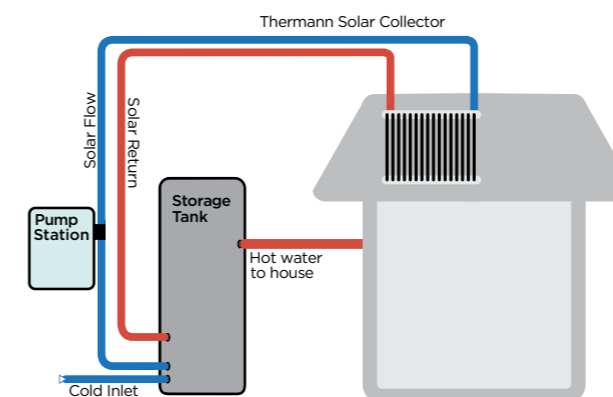
PASSIVE SUN TRACKING

The round tube design of the system passively tracks the sun throughout the day giving the highest possible performance from early morning through to late afternoon.

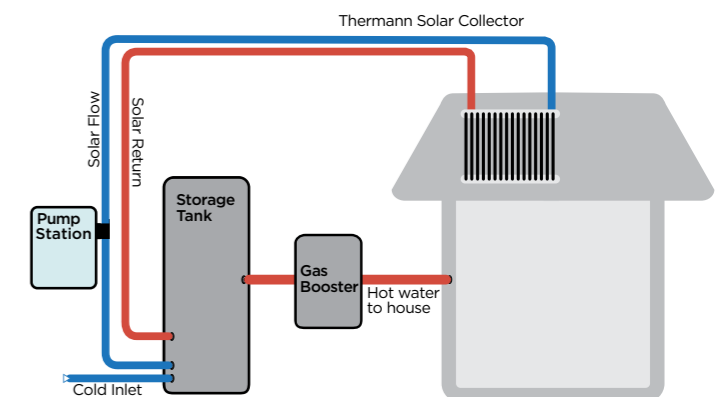


ELECTRIC & GAS SETUPS

Electric Booster



Gas Booster



Note: Diagram not to scale - basic system overview (not installation guide).

www.thermann.com.au

Reece. Works for you.™

Call **1800 032 566** or visit www.reece.com.au for your nearest Reece store.
Due to limitations in the printing process the colours in this brochure are a guide only.

The manufacturer/distributor reserves the right to vary specifications or delete models from their range without prior notification. The manufacturer/distributor takes no responsibility for printing errors.

All products enjoy a product replacement warranty. For full warranty details visit www.reece.com.au/productquality

V3 [BROCHURE CODE 2130530]

THERMANN™

reece™