





pymble 01



sydney city 02



north sydney 03



turrumurra 04



matcham 05



bayview 06

With a special emphasis on architecture and place Living Colour Landscapes strives to deliver landscape design solutions that enhance the existing architecture and its physical and cultural settings, whilst exploring innovative ways to connect people to their immediate landscape.

p 02 9949 4068 m 0408 232 127 e info@livingcolourlandscapes.com.au w livingcolourlandscapes.com.au a 12 margaret street fairlight 2094

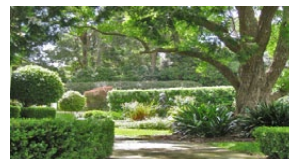
Living Colour Landscapes has over 25 years' experience and specialises in residential landscape architecture, design, construction and project management. With a cross disciplinary, vibrant studio environment we deliver fresh, creative thinking, encouraging a seamless integration of landscape, architecture and art.

Our studio is made up of professionals across the disciplines of landscape, architecture and fine arts, ensuring that each design brief is approached from a unique perspective. The benefit to our clients is a thorough understanding of the broader design process, council DA submissions and horticulture.

pymble

This one acre, secluded residential property, is set Pymble, amidst Sydney's leafy Upper North Shore in Pymble.

The original house was built in the 1930's, and although extensively added to and updated, the house, the gardens, and the planting were designed to retain and reflect the classical ambience of the era.

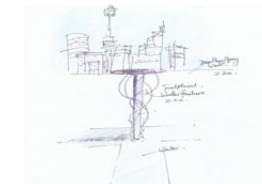
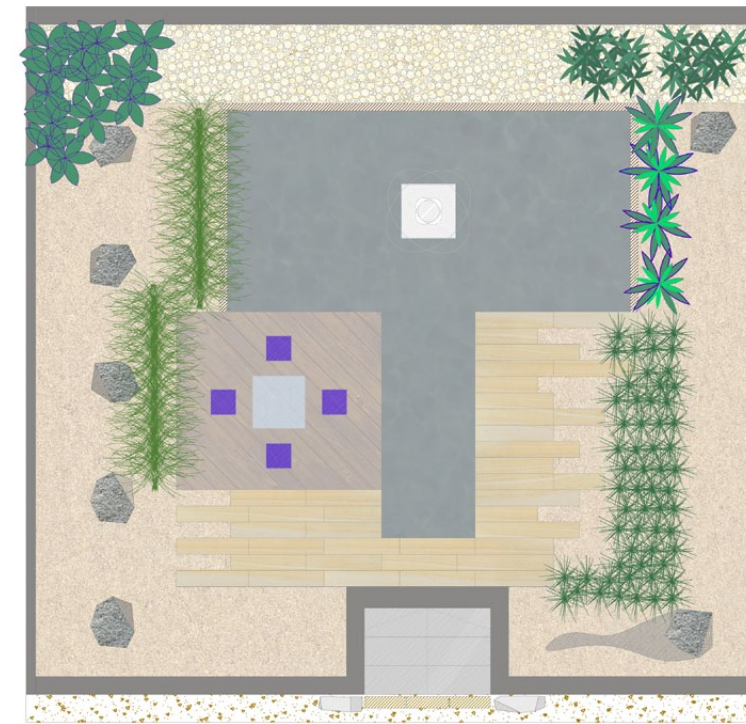


project 01
year 2000
suburb pymble
area 3625 sqm

sydney city

Titled *In the Groove*, this landscape design is a proposal for a city rooftop garden. The design explores the interplay of form, proportion, and materiality in a city context.

The design utilises an eclectic materials palette, featuring granite, basalt, hardwood timber, and rendered walls, to contrast with the transparency of water and the reflective quality of stainless steel.



project 02

year 2004

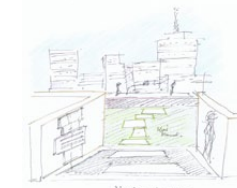
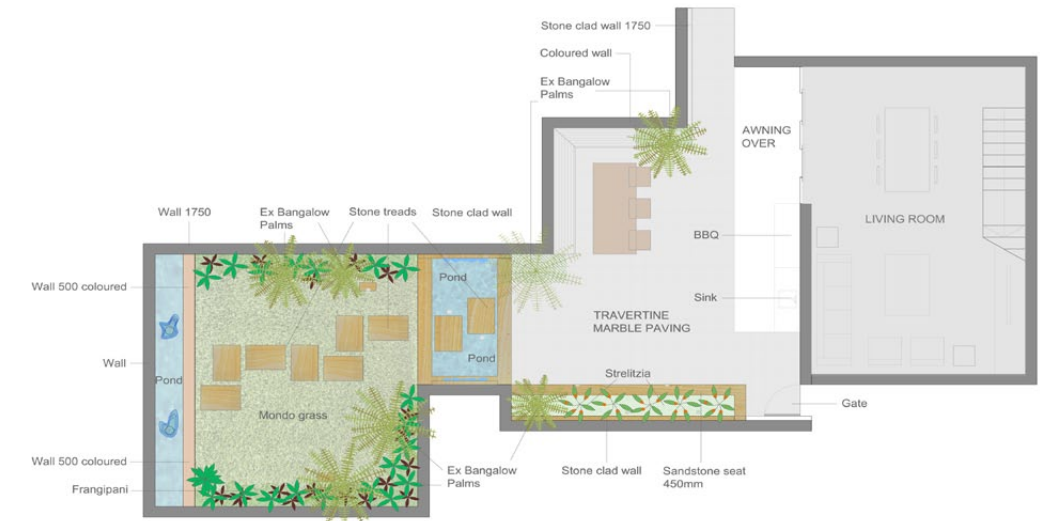
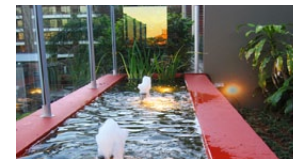
suburb sydney city

area 95 sqm

north sydney

This contemporary, rooftop, courtyard garden, situated in North Sydney, frames the garden and iconic views of Sydney Harbour in the background. The courtyard provides a tranquil garden haven from the hustle and bustle below.

The landscape design is a duet of courtyards, separated physically by opposing water features, creating a natural, flowing connection between house, garden, and the vista beyond.



project 03

year 2007

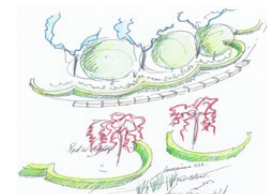
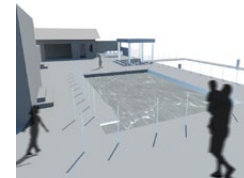
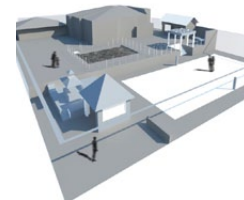
suburb north sydney

area 90 sqm

The landscape design for this federation mansion in Turrumurra was completely redesigned, with only the mature tree planting retained.

The front garden reflects and articulates the heritage values of the home and the public interface, with the surrounding streetscape. In contrast, the private rear landscape design provides extensive contemporary outdoor living spaces.

turrumurra

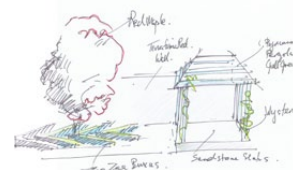
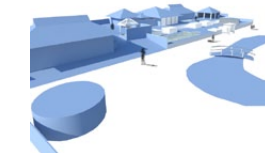
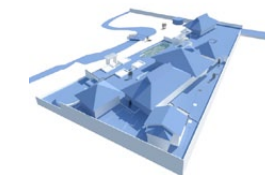


project 04
 year 2011
 suburb turrumurra
 area 2390 sqm

The landscape design for this country property, located in Matcham, on the Central Coast, explores the transition point between the built and natural environment.

The design is based on interlinking the extensive formal platform structures surrounding the house, with the sloping grassy ground, leading down to the bridge over the stream, to the natural landscape beyond.

matcham

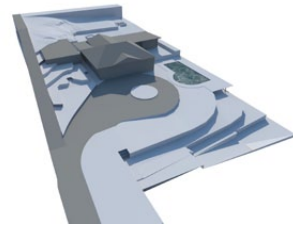
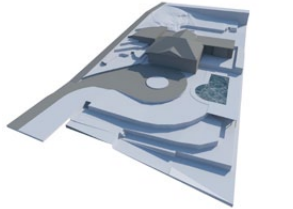
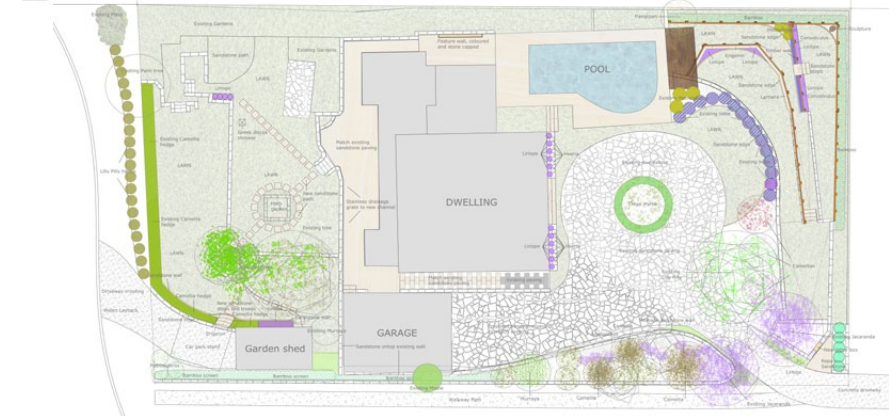
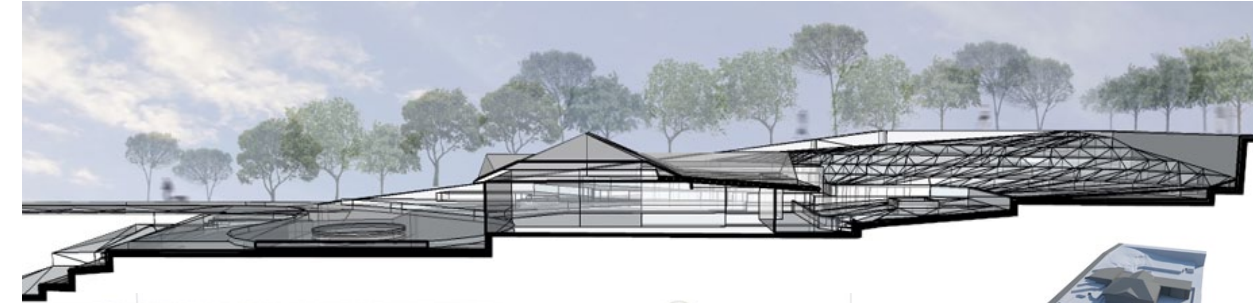


project 05
 year 2011
 suburb matcham
 area 1390 sqm

This established garden in Bayview enjoys panoramic water views. The landscape design seeks to optimize views, solve access issues, and rationalize the interconnection of multiple levels.

Materials and planting were specified to reflect the surrounding Pittwater topography and ecology, using terracing to unify the steep sloping property.

bayview



project 06
 year 2012
 suburb bayview
 area 1620 sqm

