

SAVINGS!

NEW  
CLOTHING  
RANGE  
INSIDE!



Grab some red hot deals  
with NEW fire retardant workwear

 **BOC**

**Gas & Gear** 

June–July 2010





## NEW FIRE RETARDANT GEAR

### ESCAPE™ Fire Retardant Four Seasons Jacket

- With reflective tape for Day/Night use
- High visibility jacket that converts to windproof lightweight jacket
- Sleeves zip out for a waterproof vest, with polar fleece lining for extra warmth
- Concealed hood with polar fleece collar
- Fabric: 300D Oxford/polyurethane outer shell
- Fully waterproof with sealed seams
- Complies to AS/NZS 4602.1999
- Colours: Yellow/Navy or Orange/Navy
- Sizes: SM–6XL

**SAVE  
20%**



Zip-out sleeves

Part No.	Exc.GST	Inc.GST
EFA732766/colour/size†	\$208.38	\$229.21



### ESCAPE™ Fire Retardant Clothing

Part No.	Description	Colours	Sizes	Exc.GST	Inc.GST
<b>Day/Night (with 50 mm reflective tape)</b>					
<b>A</b> H730010/colour/size†	Hi-vis cotton long sleeve shirt	Yellow/Navy, Orange/Navy	SM–5XL	\$84.96	\$93.46
<b>B</b> H710050/colour/size†	Hi-vis cotton coveralls	Yellow/Navy, Orange/Navy	77–117 (regular), 92S–132S (stout)	\$141.75	\$155.93
<b>Day Only</b>					
<b>C</b> H760010/colour/size†	Hi-vis sleeveless coveralls	Orange/Navy	77–117 (regular), 92S–132S (stout)	\$98.72	\$108.59
<b>D</b> H710055/colour/size†	Hi-vis cotton coveralls	Yellow/Navy, Orange/Navy	77–117 (regular), 92S–132S (stout)	\$105.37	\$115.91
<b>E</b> H720000/colour/size†	Cotton trousers	Navy	77–117 (regular), 92S–132S (stout)	\$57.23	\$62.96

†These products are not stocked in your local Gas & Gear and are only available on order.  
For more information or to check availability contact BOC on 131 262.





## HI-VISIBILITY CLOTHING



### NEW FIRE RETARDANT GLOVES

CUT

**Ansell PowerFlex® Fire Retardant Gloves**

Ansell PowerFlex® 80-813 offers flame resistance and a high level of cut protection in one glove.

- Fire retardant
- Cut protection level 4
- Sizes: 6–11

Part No.	Exc.GST	Inc.GST
80-813-size	\$22.37	\$24.61



### ESCAPE Hi-Vis Jackets

- Comply to AS/NZS 4602.1999
- Sizes: SM–5XL

Part No.	Description	Colours	Exc.GST	Inc.GST
<b>Day/Night (with 50 mm reflective tape)</b>				
<b>A</b> 732766/colour/size	Four Seasons 4-in-1 jacket	Yellow/Navy, Orange/Navy	\$88.24	\$97.06
<b>B</b> 825539/colour/size	Valley 3-in-1 jacket	Yellow, Orange	\$40.04	\$44.04
<b>C</b> E400050/colour/size	Phoenix jacket	Yellow/Navy, Orange/Navy	\$52.60	\$57.86
<b>D</b> 257463/colour/size	Alpine jacket	Yellow/Navy, Orange/Navy	\$38.12	\$41.93
<b>E</b> E400060/colour/size	Tracker jacket	Yellow/Navy, Orange/Navy	\$90.58	\$99.64
<b>Day Only</b>				
<b>F</b> E400005/colour/size	Alaskan jacket	Yellow/Navy	\$74.66	\$82.13
<b>G</b> E400015/colour/size	Ontario jacket	Yellow/Navy, Orange/Navy	\$34.00	\$37.40



E200015

**SAVE 35%**



E200025

**SAVE 40%**



E200040

**SAVE 45%**

## ESCAPE™ Hi-Vis Two-Tone Windcheaters

- High-quality, anti-pill, two-tone windcheaters are a welcome addition this winter
- Available in poly-cotton fleece and polar-fleece for extra warmth
- Day and Day/Night use
- Fabric: 100% polyester polar fleece and 65/35 polyester cotton
- Complies to AS/NZS 4602.1999
- Colours: Yellow/Navy or Orange/Navy
- Sizes: S-6XL

Part No.	Description	Exc.GST	Inc.GST
<b>Day Only</b>			
E200015/colour/size	¼ Zip Polycotton Fleece	\$21.13	\$23.24
E200025/colour/size	Round Neck Polycotton Fleece	\$17.89	\$19.68
E200005/colour/size	¼ Zip 100% Cotton Fleece	\$20.98	\$23.08
E200035/colour/size	¼ Zip Polar Fleece	\$19.53	\$21.48
<b>Day / Night</b>			
E200020/colour/size	¼ Zip Polycotton Fleece	\$23.71	\$26.08
E200040/colour/size	¼ Zip Polar Fleece	\$22.11	\$24.32



**SAVE 55%**

**SAVE 50%**

## ESCAPE™ Isa Jacket and Pants with Reflective Tape

- Hi-vis 300DD Oxford/polyurethane coated outer
- AS/NZS 4602.1999 Class Day/Night compliant
- Design complies to AS/NZS 4602.1999
- Fluorescent colour complies to AS/NZS 1906.4.1997
- Vented breathable jacket, lightweight mesh lining
- Zipper and stud closure pants
- Colours: Yellow or Orange
- Sizes: SM-5XL

Part No.	Description	Exc.GST	Inc.GST
E400030/colour/size	Isa Jacket	\$45.68	\$50.25
E400040/colour/size	Isa Pants	\$23.68	\$26.05

## NEW NEW NEW



**SAVE 20%**

## UMATTA® Disposable White Coveralls\*

- 605 Breathable SMS fabric, EN 5&6
- 615 Microporous fabric, EN 5&6
- Size: S-4XL

Part No.	Description	Exc.GST	Inc.GST
U605/WH/size	605 Disposable coveralls	\$4.99	\$5.49
U615/WH/size	615 Disposable coveralls	\$7.90	\$8.69

\*Please consult your local Gas & Gear for correct applications.



# Personal Protection Equipment



## PROTECTIVE EYEWEAR



### UMATTA® Redline Safety Spectacles

- Protection and comfort with style
- Close fitting, anti-fog
- Hard coated, lightweight frames
- 100% UV protection
- Approved to AS/NZS 1337

Part No.	Description	Exc.GST	Inc.GST
<b>A</b> UREDLINE/C	Clear lens	\$11.72	<b>\$12.89</b>
<b>B</b> UREDLINE/S	Smoke lens	\$11.72	<b>\$12.89</b>
<b>C</b> UREDLINE/SM	Smoke Mirror lens	\$13.27	<b>\$14.60</b>

### UMATTA® Redline Polarised Safety Spectacles

- Polarised lens stops glare, so you can see better when you're working outdoors
- Protection and comfort with style
- 100% UV protection
- Approved to AS/NZS 1337

POLARISED LENS

Part No.	Exc.GST	Inc.GST
UREDLINE/BRPOL	\$28.31	<b>\$31.14</b>



### UMATTA® REVS

- UV 400 lenses with medium impact resistance
- Lightweight frame, hard coating
- Comfortable and stylish
- Anti-fog lenses



Part No.	Frame	Lenses	Exc.GST	Inc.GST
REVS/BRZ/BRN	Bronze	Brown	\$12.41	<b>\$13.65</b>
REVS/BRZ/C	Bronze	Clear	\$11.72	<b>\$12.89</b>
REVS/CHAR/C	Charcoal	Clear	\$11.72	<b>\$12.89</b>
REVS/CHAR/S	Charcoal	Smoke	\$11.72	<b>\$12.89</b>

## SAFETY FOOTWEAR



### Weld Guard™ Leather Welder's Boots

- Black, full grain leather with bump cap, steel toe, cushioned PU midsole, rubber outsole
- Ultra durable heat resistant sole (to 300°C)
- Suitable for welding (stick welding, SMAW) and MIG/MAG welding (GMAW)
- Sizes: 6–12

Part No.	Exc.GST	Inc.GST
W1005size	\$139.90	<b>\$153.89</b>



### ESCAPE™ Rubber Soled Boots

- Bump cap and steel toe cap
- Anti-static
- Oil and acid resistant
- Abrasion resistant
- Rubber sole resistant to 300°C
- Comply to AS/NZS 2210.3
- Sizes: 5–14 (5.5–10.5)

Part No.	Description	Exc.GST	Inc.GST
<b>D</b> E9305size	Dark brown, elastic sided	\$107.94	<b>\$118.73</b>
<b>E</b> E9310size	Black, lace up	\$103.13	<b>\$113.44</b>



**NEW NEW NEW**





## HEAD & FACE PROTECTION



### 3M™ Speedglas™ 9100 Premium Welding Helmets

#### Optimum comfort, trusted protection

- One of the largest viewing areas available (73x107mm)
- Seven adjustable dark shades 5, 8, 9–13
- High impact rating according to the requirements of AS/NZS1337
- Grind and 'lock in any shade' mode
- Patented tack welding comfort mode
- Independent centre and eye level photo sensors react down to 1 amp
- Exclusive SideWindows design for enhanced vision
- Exclusive exhaust vents to assist in removing exhaled air
- Magnifying lens holder provides precise lens placement
- Advanced ergonomic ratchet style head harness with parked stop in the up position
- 24 Month revolving warranty



Part No.	Description	Exc.GST	Inc.GST
<b>AWS501805</b>	Speedglas 9100V viewing area 45x93 mm	\$531.05	<b>\$584.16</b>
<b>AWS501815</b>	Speedglas 9100X viewing area 54x107 mm (35% > 9100V)	\$597.55	<b>\$657.31</b>
<b>AWS501825</b>	Speedglas 9100XX viewing area 73x107 mm (85% > 9100V)	\$664.05	<b>\$730.46</b>

# IMAGE IS EVERYTHING...



**A**



**B**



**C**



**D**



**E**

### 3M™ Speedglas™ 100V Graphic Welding Helmets

Featuring the **NEW** Speedglas 100V Aces High helmet

- Five adjustable dark shades 8–12
- Three sensitivity settings suitable for Stick, MIG and TIG
- High impact rating according to the requirements of AS/NZS1337
- Switching speed of 0.1 ms
- Dark shade can be increased to 13 or 14 using upgrade plates
- 24 Month revolving warranty

Part No.	Description	Exc.GST	Inc.GST
<b>A</b> <b>AWS751120</b>	Speedglas 100V Ninja	\$346.40	<b>\$381.04</b>
<b>B</b> <b>AWS751220</b>	Speedglas 100V Blaze	\$396.03	<b>\$435.63</b>
<b>C</b> <b>AWS751320</b>	Speedglas 100V Tribal	\$396.03	<b>\$435.63</b>
<b>D</b> <b>AWS751520</b>	Speedglas 100V Mechanical Skull	\$396.03	<b>\$435.63</b>
<b>E</b> <b>AWS751620</b>	Speedglas 100V Trojan Warrior	\$396.03	<b>\$435.63</b>
<b>F</b> <b>AWS751720</b>	Speedglas 100V Aces High	\$396.03	<b>\$435.63</b>



**F**





## Weld Guard™ AUTOchange Welding Helmet

- Provides maximum protection for ultraviolet/infrared at every shade level
- Suitable for electrode welding (stick welding, SMAW) and MIG/MAG welding (GMAW)
- Not suitable for TIG <20A, pulse welding, overhead welding, laser welding/cutting and oxy-gas welding
- Not suitable for grinding
- Cartridge type: automatic change from light shade 4 to dark shades 9–13
- Viewing area: 42×96mm
- Fast switching time: 0.005s (0.5ms) at room temperature
- Operation temperature: -5°C to +55°C
- Power supply two solar cells – no battery changes
- Approved to standards: CE, EN, ANSI, CSA, AS/NZS

Part No.	Exc.GST	Inc.GST
<b>WGAUTO</b>	\$123.49	\$135.84



## Weld Guard™ AUTOchange Limited Edition Welding Helmet

Part No.	Exc.GST	Inc.GST
<b>WGAUTOLE</b>	\$189.05	\$207.96



## BOC Switch Welding Helmet

- Auto-darkening welding helmet
- Shade levels 10 and 11
- High (V) impact resistance
- Suitable for MIG/MAG and electrode welding only

Part No.	Exc.GST	Inc.GST
<b>1003-015-01</b>	\$281.78	\$309.95



## UMATTA™ Spoggles

- Convertible anti-fog safety spectacle and goggle, comes complete with temples (arms) and a strap in a soft Umatta pouch
- Available in Clear, Smoke, Smoke Mirror and Shade 5 for gas welding
- Easy to replace interchangeable temples to strap to wear as goggles or strap to temples to wear as spectacles
- Approved to AS/NZS 1337

Part No.	Description	Exc.GST	Inc.GST
<b>USPOGGLE/C</b>	Clear lens (set)	\$25.14	\$27.65
<b>USPOGGLE/S</b>	Smoke lens (set)	\$25.14	\$27.65
<b>USPOGGLE/SM</b>	Smoke Mirror lens (set)	\$26.10	\$28.71
<b>USPOGGLE/SH5</b>	Shade 5 lens (set)	\$28.81	\$31.69



# NEW NEW NEW NEW

## PORTABLE GAS DETECTORS

The Linde G-TECTA™ portable gas detection range has been designed to be easy to use, offering simple one button operation, capable of being used and tested by field engineers through to manufacturing operatives.

The bright red colour and reflective label designs ensure the gas detectors are highly visible when worn, maintaining compliance and safety in all areas of your business.

We understand your needs when it comes to protecting your workers, which makes BOC an ideal partner to provide gas detection solutions and support.

### G-TECTA™ SG<sub>2</sub> Disposable Single Gas Detector (IECEx)

- Compact design
- Heavy-duty, extremely robust
- Cam lock attachment
- Disposable – designed to operate for 2 years from activation date
- Limited training required for use
- 7 Sensor options
- IP65 rated
- Bump test docking solution



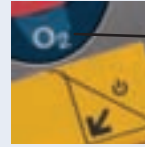
Part No.	Gas	Exc.GST	Inc.GST
<b>SG21001AU</b>	(O <sub>2</sub> ) Oxygen	\$189.15	<b>\$208.06</b>
<b>SG21002AU</b>	(CO) Carbon Monoxide	\$189.15	<b>\$208.06</b>
<b>SG21003AU</b>	(H <sub>2</sub> S) Hydrogen Sulphide	\$189.15	<b>\$208.06</b>
<b>SG21004AU</b>	(CO <sub>2</sub> ) Carbon Dioxide	\$229.21	<b>\$252.13</b>

### G-TECTA™ 4G Multi-Gas

- 3 Port – 4 gas instrument
- 14 Gas sensor options
- Data logging capability
- Compact design
- Top display
- Alligator clip attachment
- IP65 and IP67 rated
- Gases: O<sub>2</sub>, CO/H<sub>2</sub>S, LEL
- Power: 230V with charger



Part No.	Exc.GST	Inc.GST
<b>4G2001AU</b>	\$695.40	<b>\$764.94</b>



This icon will change depending on the gas



### G-TECTA™ SG Single Gas

- With charger or replaceable batteries
- Premium instrument
- 28 Gas sensor options
- Intelligent gas sensing
- Data logging capability
- Alligator clip attachment
- Compact design
- Lightweight and robust
- IP65 rated and designed to IP67



Part No.	Gas	Exc.GST	Inc.GST
<b>Comes with mains charger</b>			
<b>SG1050AU</b>	(LEL) Methane	\$510.63	<b>\$561.69</b>
<b>SG1060AU</b>	(O <sub>2</sub> ) Oxygen	\$451.99	<b>\$497.19</b>
<b>SG1066AU</b>	(CO) Carbon Monoxide	\$451.99	<b>\$497.19</b>
<b>SG1071AU</b>	(H <sub>2</sub> S) Hydrogen Sulphide	\$451.99	<b>\$497.19</b>
<b>SG1120AU</b>	(CO <sub>2</sub> ) Carbon Dioxide	\$671.85	<b>\$739.03</b>
<b>Li-ion replaceable batteries</b>			
<b>SG1062AU</b>	(O <sub>2</sub> ) Oxygen	\$364.05	<b>\$400.45</b>
<b>SG1065AU</b>	(O <sub>3</sub> ) Ozone	\$658.66	<b>\$724.53</b>
<b>SG1068AU</b>	(CO) Carbon Monoxide	\$364.05	<b>\$400.45</b>

### G-TECTA™ 4GP Multi-Gas

- 4 Port – 4 gas instrument
- 26 Gas sensor options
- Data logging capability
- Internal pump as standard (non-pump option)
- Heavy-duty, extremely robust
- Cam lock attachment
- Infra-red data download
- IP65 rated
- Gases: O<sub>2</sub>, CO/H<sub>2</sub>S, LEL
- Power: Li-ion replaceable batteries with pump and 230V with charger



Part No.	Exc.GST	Inc.GST
<b>4GP3002AU</b>	\$996.55	<b>\$1,096.21</b>







## NEW NEW

**SAVE  
20%**



### SCOTT ACSm SCBA Compliance Set

#### Everything you need in one kit

The ACSm (Advanced Carrying System) SCBA compliance set is ideal for councils, petrochemical, marine and industrial applications.

- The lightest carrying system in its class
- Softer, more flexible backplate for greater comfort and flexibility
- Lower through life costs
- Easy decontamination (machine washable)
- High performance pneumatics
- Approved with both 200 and 300bar cylinders
- AS/NZS 1716:2003 approved

#### Sets include:

- Scott ACSm SCBA (backplate, harness, pneumatics)
- Scott cylinder (choice of 6.8L 300bar or 9L 200bar)
- Scott Promask PP Left Quick Fit (LQF) full face mask

Part No.	Description	Exc.GST	Inc.GST
SCBACOMP6	Compliance set with 6.8L 300bar carbon fibre cylinder	\$2,399.09	\$2,639.00
SCBACOMP9	Compliance set with 9L 200bar hoop cylinder	\$2,399.09	\$2,639.00

**BONUS**  
Scott SCBA Bag

with every purchase of a Scott ACSm Compliance Set (Valued at \$34.82 Inc.GST)

Offer only valid during promotional period or while stocks last



## HEIGHT SAFETY



### MILLER TurboLite with Twistlock Karabiner & Aluminium Snap Hook

A small and light fully compliant retractable fall arrest block designed to be used as a personal fall limiter, arresting free fall within millimetres. The unit features 2m retractable webbing, with a twistlock karabiner at the top and a 19mm opening double acting snap hook at the bottom.

- Weight: 0.85 kg

Part No.	Exc.GST	Inc.GST
M1017900	\$230.00	\$253.00

### MILLER Ladder Grip

Ladder Grip attaches permanently to the roof in order to hold the ladder in place, preventing it from moving or tipping over during use. Acts as both a low profile ladder bracket and a fall arrest anchor point for one person.

**NEW**



Part No.	Exc.GST	Inc.GST
M1030061	\$210.00	\$231.00

### Millerfix Anchor Point

Provides a safe and secure anchor point for maintenance and roof work. The unit provides the lowest possible visual intrusion ensuring that the unit does not harm the aesthetics of the buildings be it commercial or residential.

- Fall arrest anchor point for 1 person, easy to install
- Fitted with a weather seal and supplied with mounting rivets

**NEW**



Part No.	Exc.GST	Inc.GST
M1030055	\$99.60	\$109.56

### MILLER Basic Full-Frontal Fall Arrest Construction Harness

- Vest-style design, polyester webbing
- Frontal fall arrest attachment point and rear dorsal dee ring
- Easy to put on with fully adjustable chest, shoulder and leg straps
- Lanyard ring on label pack for temporary lanyard parking



Part No.	Exc.GST	Inc.GST
M1020063	\$120.00	\$132.00

**SCOTT**

**MILLER**  
by SPERIAN

## HAND CLEANERS

### STOKO™ Gel Instant Hand Sanitiser

- Ethanol based gel sanitises hands without water
- Kills 99% of common germs that can cause disease
- Contains a conditioner to help prevent the skin from drying out



Part No.	Description	Exc.GST	Inc.GST
10089024	118ml Gel flip top bottle	\$5.30	\$5.83
10088912	237ml Gel pump bottle	\$11.55	\$12.71
10088806	2000ml Gel soft bottle	\$54.76	\$60.24

**NEW**

### STOKO™ Refresh Sanitising Wipes

- Contains 65% alcohol to kill germs
- Reduces risk of infection and cross contamination
- Gentle on hands
- Contains moisturisers and vitamin E
- Larger, stronger wipes



Part No.	Description	Exc.GST	Inc.GST
34718	200 wipes / canister	\$26.55	\$29.21
34719	70 wipes / canister	\$9.31	\$10.24



### STOKO™ Refresh Foam Soap

- Thick, luxurious foam and light, fresh fragrance
- Small, attractive dispenser, perfect for front-end restrooms
- More washes per refill means less changeouts

Part No.	Description	Exc.GST	Inc.GST
A 29559502	800ml Refresh Anti-Bacterial Foam starter pack	\$50.00	\$55.00
B 29988710	800ml Refresh Foaming Instant Hand Sanitiser starter pack	\$58.56	\$64.42

## HAND TOOLS

### POWERBUILT MIG Welding Pliers

- Heat-treated carbon steel
- Specifically designed for CO<sub>2</sub> welding torches
- 200 mm / 8 inches



Part No.	Exc.GST	Inc.GST
PA0281	\$29.68	\$32.65



### POWERBUILT Pliers

- Drop forged, chrome nickel, high carbon steel

Part No.	Description	Exc.GST	Inc.GST
A 640408	200 mm / 8" Chrome Nickel Linesman Pliers	\$19.22	\$21.14
B 640393	200 mm / 8" Chrome Nickel Long Nose Pliers	\$19.22	\$21.14
C 640387	175 mm / 7" Chrome Nickel Diagonal Pliers	\$19.22	\$21.14



### ALLTRADE Clamps

- Drop forged, carbon steel, nickel plated

Part No.	Description	Exc.GST	Inc.GST
D 60040	225 mm / 9" Locking Welding Clamp	\$14.45	\$15.90
E 60041	250 mm / 10" Locking Sheet Metal Clamp	\$15.32	\$16.85
F 60042	275 mm / 11" Locking C Clamp	\$10.87	\$11.96

## MAGNETIC TOOLS



### SERPENT & DOVE Magnetic Tools

Part No.	Description	Exc.GST	Inc.GST
<b>A</b> <b>STWAND</b>	Wonder-Wand Magnetic Pick-up Tool	\$76.00	\$83.60
<b>B</b> <b>STSTEELAWAY</b>	SteelAway Magnetic Sweeper	\$555.00	\$610.50
<b>C</b> <b>STMEC800</b>	Welders Magnetic Earth Clamp (Improved)	\$25.80	\$28.38
<b>D</b> <b>STRWMS</b>	Rollalong Welders Magnetic Square	\$21.50	\$23.65
<b>E</b> <b>MAXX250</b>	250kg Permanent Lifting Magnet	\$668.00	\$734.80
<b>F</b> <b>STCDWMS</b>	Compact Double Welders Magnetic Square	\$25.75	\$28.33
<b>STWMS</b>	Welders Magnetic Square (Standard)	\$16.50	\$18.15
<b>STCMS</b>	Chunky Welders Magnetic Square	\$31.50	\$34.65
<b>STMECM600</b>	Switchable Magnetic Earth Clamp	\$136.40	\$150.04



## INDUSTRIAL WORKSHOP TOOLS

**BONUS\***

2 Cutters  
(18mm & 22mm  
Short Series)  
& Pilot Pin

**BONUS\***

HMSET-A Cutter Set  
(14, 16, 18, 20 &  
22mm Short Series)  
& Pilot Pin

**BONUS\***

Chuck & Adaptor  
(13mm) & DSM-3  
Drill Set (1.0-13mm)



### HOLEMAKER Drilling Machines

- Quality European made machines
- Accept standard Weldon shank Slugger cutters
- Smart magnet technology to ensure sufficient magnetic adhesion
- Supplied in metal carry case with cutter guard and safety strap

Part No.	Description	Motor	Capacity	Weight	Exc.GST	Inc.GST
<b>E</b> <b>HM30</b>	Holemaker 30	920W	30mm dia. x 52mm	10.5 kg	\$1,136.36	\$1,250.00
<b>F</b> <b>HM40</b>	Holemaker 40	1020W	40mm dia. x 52mm	13.7 kg	\$1,359.09	\$1,495.00
<b>G</b> <b>HM50</b>	Holemaker 50	1080W	52mm dia. x 52mm	16.7 kg	\$1,813.64	\$1,995.00

BOC STOCKS A  
COMPREHENSIVE  
RANGE OF  
SLUGGER CUTTERS  
ASK AT YOUR LOCAL  
GAS & GEAR STORE



### SLUGGER Cutters

- High quality, made in USA
- For use with Slugger and other suitable magnetic drilling machines
- Available in sizes 12-52mm diameter, in 1mm increments, 25 and 50mm depth
- Imperial sizes available
- TCT and specialty cutters also available
- Cutters up to 100mm depth and 120mm diameter also available

Part No.	Size	Exc.GST	Inc.GST
<b>25 mm Depth</b>			
<b>SC1225</b>	12x25mm	\$36.36	\$40.00
<b>SC2225</b>	22x25mm	\$49.09	\$54.00
<b>50 mm Depth</b>			
<b>SC1450</b>	14x50mm	\$49.09	\$54.00
<b>SC2250</b>	22x50mm	\$68.18	\$75.00

\*Via redemption. See p20 for Terms & Conditions.



BOC CARRY A WIDE RANGE OF AIR COMPRESSORS & GENERATORS FOR ALL YOUR WELDING NEEDS

BOC17-3



## BOC Air Compressors

Part No.	Description	Exc.GST	Inc.GST
<b>BOC14</b>	BOC 14V Twin Electric Belt Drive Compressor	\$960.00	<b>\$1,056.00</b>
<b>BOC17-3</b>	BOC 17 W Triple Electric Belt Drive Compressor	\$1,000.00	<b>\$1,100.00</b>
<b>BOC24-P</b>	BOC24 Petrol Industrial Compressor	\$2,312.50	<b>\$2,543.75</b>
<b>BOC52</b>	BOC 52 Three Phase Industrial Compressor	\$3,250.00	<b>\$3,575.00</b>
<b>BOC52-D</b>	BOC 52 Diesel Industrial Compressor	\$8,000.00	<b>\$8,800.00</b>
<b>BOC15HPFB</b>	BOC 15 High Pressure Electric Fatboy Compressor	\$1,200.00	<b>\$1,320.00</b>

APH3-3RS1BS



## BONUS\*

Pair of 250A 5m Welding Leads PLUS Advanced Power Cap and Stubby Cooler

Offer only valid during promotional period or while stocks last



APH8-ORS1BS

## HONDA Powered Portable Generators

Part No.	Description	Exc.GST	Inc.GST
<b>APW180HRA</b>	7kVA AC Honda 13 bhp Recoil Start Generator Set & 180A Welder	\$3,428.33	<b>\$3,771.16</b>
<b>APH3-3RS1BS</b>	3.3kVA Honda 6.5 bhp Recoil Start Builders Special	\$1,658.57	<b>\$1,824.43</b>
<b>APH8-ORS1BS</b>	8kVA Honda 13 bhp Recoil Start Builders Special	\$2,684.28	<b>\$2,952.71</b>

## POWER TOOLS



## HITACHI Power Tools

Part No.	Description	Exc.GST	Inc.GST
<b>HITACHI Angle Grinders</b>			
<b>G10SD2</b>	100 mm 760W Angle Grinder	\$111.25	<b>\$122.38</b>
<b>A G13SE2</b>	125 mm 1200W Angle Grinder with deadman switch	\$248.75	<b>\$273.63</b>
<b>B G23SE2</b>	230 mm 2400W Angle Grinder	\$248.75	<b>\$273.63</b>
<b>HITACHI Cordless Power Tools with Li-Ion Batteries</b>			
<b>DS18DFL-H6</b>	13 mm 18V Cordless Driver Drill	\$311.25	<b>\$342.38</b>
<b>C DV18DL-HL</b>	13 mm 18V Cordless Impact Hammer Drill	\$586.25	<b>\$644.88</b>
<b>G18DL-H4</b>	115 mm 18V Cordless Angle Grinder	\$161.25	<b>\$177.38</b>
<b>WR14DSL-HL</b>	14.4V Cordless Impact Wrench	\$373.75	<b>\$411.13</b>
<b>HITACHI Cut-Off Machine</b>			
<b>D CC14SF</b>	355 mm 2400W High-Speed Cut-Off Machine	\$361.25	<b>\$397.38</b>



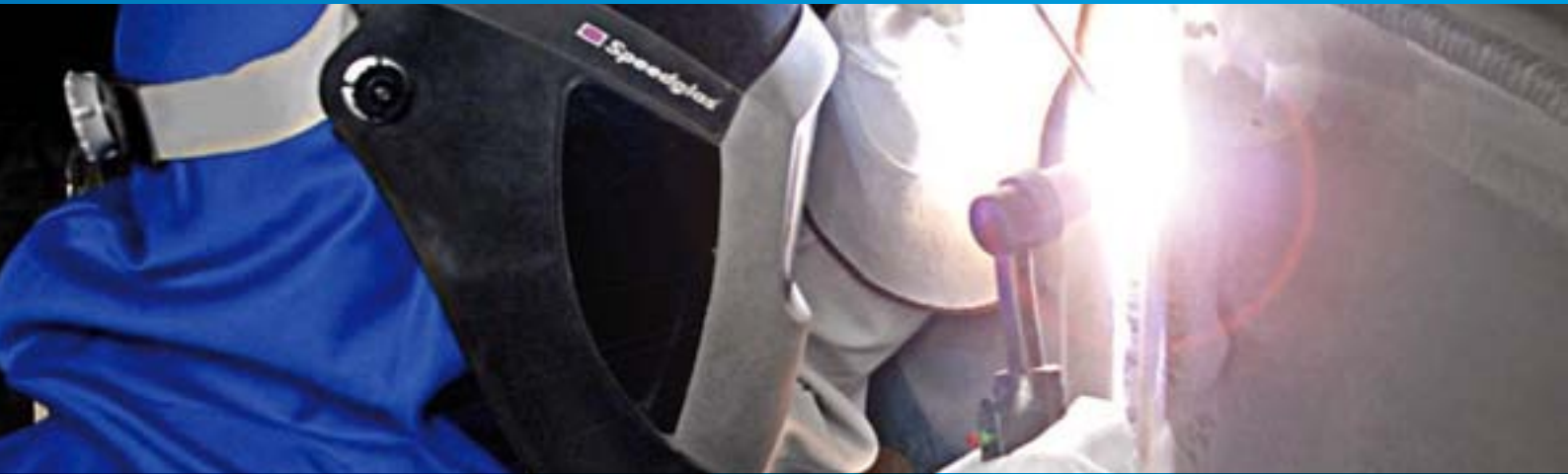
\*Via redemption. See p20 for Terms & Conditions.



**HONDA®**

**HITACHI**  
Inspire the Next

# HAVE YOU GOT THE RIGHT GAS WORKING FOR YOU?

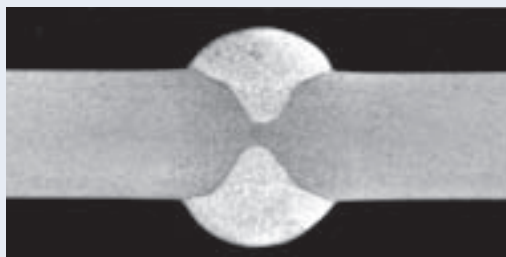


## GMA Welding of Aluminium – Argon versus Alushield® Shielding Gases

**Increase your welding speed and improve your penetration profile with Alushield® shielding gases.**

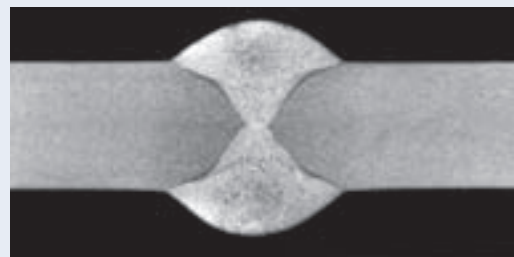
Alushield® shielding gases are superior in most cases with regard to economics and quality. Ask your local Gas&Gear representative for more information.

### ARGON



**280 A / 25 V**

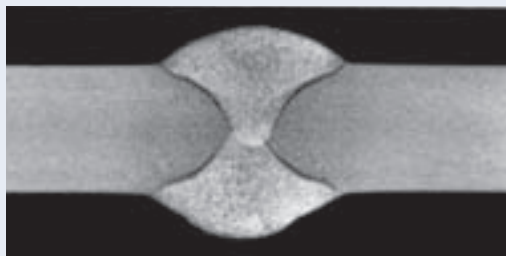
### ALUSHIELD® LIGHT



**282 A / 27 V**

Alushield® Light is 27% Helium with a balance of Argon

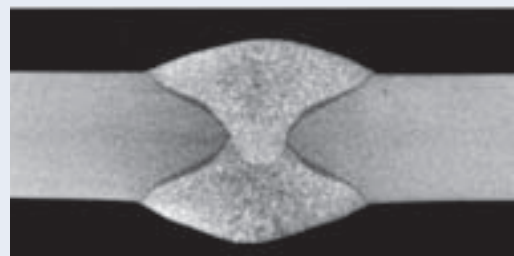
### ALUSHIELD® UNIVERSAL



**285 A / 30 V**

Alushield® Universal is 50% Helium with a balance of Argon

### ALUSHIELD® HEAVY



**285 A / 34 V**

Alushield® Heavy is 25% Argon with a balance of Helium

Parent metal	EN AW-5754 (Al Mg3)
Filler metal	ISO 18273 – S Al 5183 (Al Mg4.5 Mn)

Wire feed speed	9.7 m/min	t = 10 mm
Welding speed	62 cm/min	ø = 1.6 mm



## Smootharc Elite 180 Multiprocess Machine

The Smootharc Elite 180 Multiprocess is a great investment for the serious welder and ideal for large construction sites, mining and tough assembly work.

It offers three full-scale welding processes: MIG/MAG standard, MMA and TIG (liftarc) welding in a single machine. Portable, gas-cooled and built tough to last, this machine consistently delivers high quality welding of all materials.

Part No.	Exc.GST	Inc.GST
<b>ELITEMULTI180</b>	\$2,500.00	<b>\$2,750.00</b>

### Specifications

Duty cycle: MIG 60% @ 120A  
MMA 60% @ 110A  
TIG 60% @ 140A

Recommended generator rating: 7.5 kVA

Fitted with a 15A plug

Weight: 19kg complete

## BOC Smootharc Elite MMA Machines

They may be small but the Smootharc Elite MMA 162VRD and 180VRD are BOC's 'mighty midgets'. These compact but powerful inverter power sources are great all-rounders for quick and easy repair work or more extensive pipeline and offshore work.

The outstanding welding properties, large mains voltage range and easy handling make both machines ideal for construction, mining and assembly work. The added VRD (voltage reduction device) function makes the MMA welding machines a safer alternative on any worksite.

Low investment costs and universal applications make the Elite MMA welding machines extremely economical. The innovative inverter technology offers premium quality and high output with low energy consumption – setting new environmental standards.

- Fail to safe
- VRD fitted

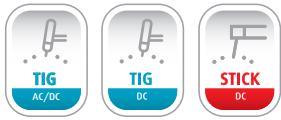


INNOVATIVE VRD ENSURES OPTIMUM USER PROTECTION WITH 'FAIL TO SAFE'



Part No	Description	Exc.GST	Inc.GST
<b>ELITEMMA162</b>	Smootharc Elite MMA 162	\$1,200.00	<b>\$1,320.00</b>
<b>ELITEMMA16210A</b>	Smootharc Elite MMA 162 10A	\$1,200.00	<b>\$1,320.00</b>
<b>ELITEMMA180</b>	Smootharc Elite MMA 180	\$2,000.00	<b>\$2,200.00</b>

Specifications	MMA162	MMA180
Duty cycle:	162–35% @ 150A	180–20% @ 180A
Recommended generator rating:	7.5 kVA	9.7 kVA
Weight:	4.8 kg	7.9 kg

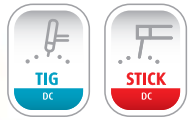


## Smootharc Elite TIG 230 AC/DC Machine

This Smootharc Elite TIG 230 AC/DC machine is fitted with power-saving, environmentally friendly inverter technology. It performs flawless joining of unalloyed, low-alloy and high-alloy steels as a standard. Easy connection of lightweight metals and their alloys makes this TIG machine suitable for every application. Extensive AC functions and setting options of the intuitive control concepts makes your work considerably easier.

- Easy to use on site
- AC Special – alternating current for every need
- Special functions for different thickness of materials
- Flexible power supply
- Three year warranty

Part No.	Exc.GST	Inc.GST
<b>ELITETIG230ACDC</b>	\$4,573.00	<b>\$5,030.00</b>



## Smootharc HF DC 185 TIG Package

The Smootharc TIG 185 is an inverter-based TIG welding machine with added MMA welding capability. The machine will consistently deliver high quality TIG welding of steel, stainless steel and copper. The single-phase 240V (15A) gives greater usage location options.

### The Smootharc 185 is ideal for:

- Sheet metal
- Stainless steel fabrications
- Pipe welding
- Root runs where high quality welds are required

Part No.	Exc.GST	Inc.GST
<b>BOCDC185</b>	\$899.10	<b>\$989.01</b>

**SAVE 15%**



## Smootharc MMA 130

The new Smootharc MMA 130 is a lightweight, inverter-based welding machine that is compact and portable, making it ideal for on-site welding jobs. The MMA 130 connects to 240V supply (10A input) and has an output of 130A DC @ 60% duty cycle.

Part No.	Exc.GST	Inc.GST
<b>MMA130P</b>	\$325.00	<b>\$357.50</b>



## Smootharc MMA 170

The lightweight Smootharc MMA 170 is an inverter-based welding machine that is an ideal on-site welding tool.

The compact and robust design is extremely portable with a tough plastic outer case.

Part No.	Exc.GST	Inc.GST
<b>MMA170P</b>	\$420.00	<b>\$462.00</b>

## NEW NEW NEW NEW NEW



### Smootharc Elite Progress Pulse MIG Machines

Introducing the Smootharc Elite MIG 330 and MIG 451 Progress Pulse machines – the ultimate in joining technology.

These fully digital welding machines with short-circuit proof pulse arcs accurately determine droplet size and frequency of material transfer guaranteeing high quality welds on all joinable materials.

These tough, practical and high quality welding machines are available in water-cooled remote or air-cooled compact models with optional Synergic operation.

- **Multi-talented** – MIG/MAG pulse, standard, plus TIG and MMA – four processes, one power source
- **Powerful and economical** – The digital system provides an extremely low-spatter pulse arc with all materials, ensures optimum ignition and favourable welding characteristics, which saves time and money
- **Lightweight but strong** – Reliable joining of aluminium with controlled heat input thanks to the optimised pulse arc. The sophisticated start program with a high ignition pulse current ensures fail-safe ignition
- **Innovative pulse welding for stainless steel** – The innovative pulse welding capability allows targeted heat input and controlled drop transfer; guaranteeing optimum welding results for stainless steel connections
- **Remote control torch** – The easy-to-use welding torch gives you one button access to all programs, user modes, procedures and up/down functions

#### Smootharc Elite MIG 330 Progress Pulse

##### Specifications:

- Duty cycle: 25% @ 330A
- Output MIG 5–330A
- Recommended generator rating 18.7kVA
- Fitted with a PC2 remote control torch
- Weight: 42.5 kg

Part No.	Exc.GST	Inc.GST
ELITEMIG330PULSE	\$8,664.00	\$9,530.40

#### Smootharc Elite MIG 451 Progress Pulse

##### Specifications:

- Duty cycle: 80% @ 420A
- Water/air cooled
- Recommended generator rating 29.1kVA
- Fitted with a PC2 remote control torch
- Weight: 125 kg

Part No.	Exc.GST	Inc.GST
ELITEMIG451PULSE	\$14,124.00	\$15,536.40





## MAGMATE PRO™ Single-Phase MIG Welding Machines

Light in weight and heavy on performance, these next generation general purpose welding machines suit a wide range of applications – from large industrial operations through to smaller welding requirements.



### MAGMATE PRO™ 200

- Duty cycle: 50% @ 200A
- Voltage steps: Infinite
- Solid wire range: 0.6–1.2mm

Part No.	Exc.GST	Inc.GST
PRO200	\$1,100.00	\$1,210.00

### MAGMATE PRO™ 250

- Duty cycle: 30% @ 250A
- Voltage steps: Infinite
- Solid wire range: 0.6–1.2mm

Part No.	Exc.GST	Inc.GST
PRO250	\$1,276.00	\$1,403.60



### MAGMATE™ 180 Portable MIG Machine

The MagMate 180P offers infinite voltage and inductance control for optimum control of welding parameters. That means welding is easier than ever with a MagMate. Inverter technology also means this machine is smaller and even more portable weighing only 20 kg. MagMate 180P is designed as a general purpose MIG welder and is suitable for a wide range of operations.

#### Features and benefits

- **Euro torch connection:** Allows easy connection and removal of the torch
- **Infinite voltage control:** Allow greater control and a smoother running arc across the range

#### Applications

- Ideally suited for MIG welding of thinner sections (e.g. panel steel)
- Ideal for panel beaters, exhaust fitters and air conditioning ducting and any other sheet metal applications

Part No.	Exc.GST	Inc.GST
MAG180P	\$849.00	\$933.90



## NEW NEW NEW NEW NEW NEW



### Smootharc Elite MIG Machines

Introducing the step switch controlled MIG/MAG standard welding machines. The Smootharc Elite MIG 351 and 501 welding machines offer cost effective, cutting edge technology matched with excellent performance.

These innovative and robust machines will consistently deliver high quality welding performance now and into the future.

- **The perfect start** – Optimised ignition plus creep start and free-burn functions ensure consistent ignition of the arc
- **Excellent welding properties** – Fine welding voltage adjustment and optimised welding choke guarantee perfect adaptation to different methods
- **Tried-and-tested operation** – The operating point is selected using the step switch and wire feed controller
- **Practical, robust metal casting** – The corrosion resistant powder-coated steel casing is ideal for the toughest conditions
- **Minimised finishing work for high cost-effectiveness** – Features low-spatter joining with short arc and spray arc using argon, CO<sub>2</sub> or mixed gases
- **Five year warranty** – Transformer and Rectifier
- **Three year warranty** – PCB's



### Smootharc Elite MIG 351

#### Specifications:

- Duty cycle: 45% @ 350A
- 4 Roll drive wire feeder
- Air cooled
- 16 Switching steps
- Euro torch connector
- Weight: 125 kg



Part No.	Exc.GST	Inc.GST
<b>ELITEMIG351</b>	\$4,200.00	\$4,620.00



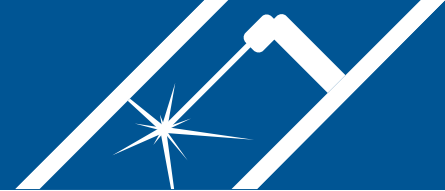
### Smootharc Elite MIG 501

#### Specifications:

- Duty cycle: 60% @ 500A
- 4 Roll drive wire feeder
- Water cooled
- 36 Switching steps
- Euro torch connector
- Weight: 200 kg



Part No.	Exc.GST	Inc.GST
<b>ELITEMIG501</b>	\$6,400.00	\$7,040.00



**SAVE 25%**

## Silicon Bronze Welding Wire

- Used for welding of galvanised steel and MIG brazing of light gauge sections

Part No.	Size	Exc.GST	Inc.GST
211009	0.9 mm, 13.6 kg	\$370.00	\$407.00
211509	0.9 mm, 5 kg	\$160.00	\$176.00

## Easyflo Silver Brazing Flux Paste

Preferred general purpose flux, suitable for most engineering materials. Also suitable for use with all ProSilver alloys. Residue soluble in hot water or 10% caustic soda.

- Temperature range 550–800°C
- Size: 250 g

**SAVE 15%**



Part No.	Exc.GST	Inc.GST
EFLOFLUX	\$12.50	\$13.75



## BOC ProSilver Silver Brazing Alloys

Part No.	Description	Exc.GST	Inc.GST	SAVE
LTAP0205	ProSilver 2 2.5 x 750 mm, 0.5 kg pack	\$30.00	\$33.00	20%
LTAT4501	ProSilver 45T 1.5 x 750 mm, 0.5 kg pack	\$300.00	\$330.00	10%
LTAT4564	ProSilver 45T 1.5 x 500 mm, 2 rod pack	\$22.00	\$24.20	15%
LTAF4550T	Silvercoat 45T 1.5 x 500 mm, 2 rod pack	\$25.00	\$27.50	15%
LTAP1507	Silvercoat 15 2.5 x 750 mm, 0.5 kg pack	\$110.00	\$121.00	



## BOC Smootharc™ S 312 Electrodes

- Excellent operator appeal
- Welds all steels
- Joins stainless steel to mild steel

Part No.	Size	Exc.GST	Inc.GST
188122	2.5 mm, 2.5 kg can	\$366.35	\$402.99
188123	3.2 mm, 3.0 kg can	\$414.01	\$455.41



## BOC Smootharc™ 13 General Purpose Electrodes

All-round, general-purpose electrode offering reduced spatter and minimal ripple in the weld puddle.

- 5 kg box

Part No.	Size	Exc.GST	Inc.GST	SAVE
187145	2.5 mm	\$60.00	\$66.00	30%
187146	3.2 mm	\$50.00	\$55.00	25%
187147	4.0 mm	\$45.00	\$49.50	25%



**SAVE 15%**

## BOC Gouging Carbon DC

- Compacted quality carbon/graphite ensures effective, fast and efficient metal removal
- Pack of 50 gouging carbons

Part No.	Size	Exc.GST	Inc.GST
65G	6.5 x 305 mm	\$21.87	\$24.06
80G	8.0 x 305 mm	\$29.75	\$32.73
95G	9.5 x 305 mm	\$29.75	\$32.73

Check out our website: [www.boc.com.au](http://www.boc.com.au)



### 3M™ 35 Litre General Purpose Cabin Bag Spill Kit

A compact spill response kit designed for use in most transportation vehicles where small quantities of non-aggressive liquids are handled.

Part No.	Exc.GST	Inc.GST
AT010579988	\$103.96	\$114.36



### 3M™ Personal Noise Indicator

Alerts users to potentially dangerous noise levels, helping identify areas where hearing protection may need to be worn. Users simply clip the Noise Indicator to a shirt or jacket; its LED delivers a clear indication (red or green flashing LED) when noise levels exceed a potentially hazardous threshold.



Part No.	Exc.GST	Inc.GST
70071563947	\$68.33	\$75.16



This Gas & Gear catalogue is printed by Offset Alpine printing Pty Ltd under ISO 14001 Environmental Certification. Paper fibre used in printing this catalogue is from certified forests and controlled source.



#### Terms and Conditions for Redemption

1) This promotion runs from 01/06/10 to 31/07/10 only. 2) These special offers are limited to one bonus product per purchase as shown in June-July 2010 Gas & Gear catalogue. 3) To be eligible to redeem the BONUS items Part No. HM1825 & HM2225 & SP16003 (18mm short series cutter & 22mm short series cutter & pilot pin set) you must purchase at the advertised price a HM30 Holemaker 30 from a BOC Gas & Gear or by calling 131 262. 4) To be eligible to redeem the BONUS item Part No. HMSET-A (14-22mm short cutters & pilot pin set) you must purchase at the advertised price a HM40 Holemaker 40 from a BOC Gas & Gear or by calling 131 262. 5) To be eligible to redeem BONUS items Part No. SA20102 (chuck & adaptor set) and DSM-3 (25 piece 1-13 mm tin coated drill bit set), you must purchase at the advertised price a HM50 Holemaker 50 from a BOC Gas & Gear or by calling 131 262. 6) To be eligible to redeem the BONUS pair of 250A 5m Welding Leads, PLUS Advanced Power Cap and Stubby Cooler, you must purchase at the advertised price one of the HONDA Powered Portable Generators (displayed in this June-July 2010 catalogue only) from a BOC Gas & Gear or by calling 131 262. 7) You must complete a fax back form to be eligible to redeem the product. 8) BOC Gas & Gear or a Customer Service Centre staff member will fax your completed form to the supplier to confirm your redemption request on the day of your purchase. 9) You will be either given a copy of the completed form for your records or one will be faxed to you from the Customer Service Centre. 10) Delivery of your redemption product should occur within 21 days of the purchase date to the address on the completed form. BOC takes no responsibility for any delay of delivery. 11) If after 30 days from your purchase date you haven't received your BONUS HM1825 & HM2225 & SP16003, HMSET-A or SA20102 & DSM-3 redemption products, please contact Industrial Tools on 07 3287 1114. 12) If after 30 days from your purchase date you haven't received your BONUS Pair of 250A 5m Welding Leads, PLUS Advanced Power Cap and Stubby Cooler, redemption products, please contact M Power on 1300 733 004. 13) BOC Gas & Gear is acting solely as the promoter of this redemption programme and accepts no responsibility for the product manufacture, warranty or distribution of these redeemable products. 14) If you have any enquiries relating to the BONUS HM1825 & HM2225 & SP16003, HMSET-A or SA20102 & DSM-3, please contact Industrial Tools on 07 3287 1114. 15) If you have any enquiries relating to the BONUS Pair of 250A 5m Welding Leads, PLUS Advanced Power Cap and Stubby Cooler, please contact M Power on 1300 733 004.

## HOW TO ORDER

### Payment Options



In-Store

Online: [www.boc.com.au](http://www.boc.com.au)

Phone: 131 262

Fax: 132 427

## BOC Gas & Gear Stores

ACT		
Canberra	9 Barrier St, Fyshwick	(02) 6280 6921
NSW METROPOLITAN		
Brookvale	40 Orchard Rd	(02) 9939 1000
Caringbah	25 Erskine Rd	(02) 9540 1144
Marayong	Lot 18 Vardys Rd	(02) 9622 1988
Minto	Cnr Ben Lomond Rd & Cary Grv	(02) 9820 1622
Moorebank	Cnr Seton Rd & Regents Crs	(02) 9600 9900
St Marys	116 Forrester Rd	(02) 9623 2285
St Peters	3 Burrows Rd Sth	(02) 9557 6660
Wetherill Pk	440 Victoria St	(02) 9616 3333
NSW REGIONAL		
Gosford West	258 Manns Rd	(02) 4324 5444
Newcastle	73a Elizabeth St, Tighes Hill	(02) 4940 0399
Lismore	11 Snow St	(02) 6621 2739
Muswellbrook	Lot 105 Carramere Rd	(02) 6541 0544
Orange	16 Peisley St	(02) 6362 6022
Port Kembla	Five Islands Rd, Cringila	(02) 4275 8000
Tamworth	Lot 27, Hargrave St	(02) 6765 4888
Wagga Wagga	48-50 Hammond Ave	(02) 6921 5833
NT		
Alice Springs	57-59 Elder St	(08) 8952 4922
Darwin	1227 Winnellie Rd, Winnellie	(08) 8984 3811
QLD METROPOLITAN		
Rocklea	1688 Ipswich Rd	(07) 3212 4227
Virginia	Cnr Sandgate Rd & Vauxhall St	(07) 3865 3955

QLD REGIONAL		
Bundaberg	50 Enterprise St	(07) 4152 3055
Burleigh Hds	12 Fremantle St	(07) 5593 5767
Cairns	47-51 Buchan St	(07) 4035 4616
Emerald	Cnr Hicks & Daniel Sts	(07) 4982 0033
Gladstone	Red Rover Rd	(07) 4972 2533
Labrador	3 Telford Plc	(07) 5537 3622
Mackay	45-51 Maggiolo St, Paget	(07) 4968 2222
Mt Isa	1a Traders Way	(07) 4743 8811
Rockhampton	Shop 3, 415 Yaamba Rd	(07) 4928 3011
Sunshine Cst	8 Robert St Kunda Pk	(07) 5476 6544
Toowoomba	327 Taylor St	(07) 4633 2900
Townsville	370 Ingham Rd	(07) 4728 8677
SA METROPOLITAN		
Athol Park	246 Grand Junction Rd	(08) 8447 6985
Lonsdale	22 O'Sullivan Beach Rd	(08) 8326 6755
Mile End South	Cnr Rosslyn St & South Rd	(08) 8443 3519
SA REGIONAL		
Mt Gambier	4 Graham Rd	(08) 8725 9011
Roxby Downs	Lot 20 Gunson St, Olympic Dam	(08) 8671 3289
Whyalla	McBryde Terrace	(08) 8645 7555
TAS		
Devonport	41-43 Don Rd	(03) 6424 4388
George Town	95 Main Rd	(03) 6382 4192
Hobart	11-21 Derwent Pk Rd, Derwent Pk	(03) 6272 6844
Launceston	164 Invermay Rd, Invermay	(03) 6326 4666

VIC METROPOLITAN		
Bayswater	Cnr Dorset Rd & Ramage St	(03) 9720 9988
Campbellfield	Cnr Leader St & Scammel St	(03) 9308 9499
Dandenong	60-64 Greens Rd	(03) 9792 1700
Moorabbin	59 Cochrans Rd	(03) 9532 2422
North Laverton	Cnr Little Boundary Rd & Pipe Rd	(03) 9315 2290
Preston	90 Bell St	(03) 9487 8500
Sth Melbourne	Cnr York St & Cecil St	(03) 9699 6844
VIC REGIONAL		
Ballarat	901 Latrobe St	(03) 5336 1322
Bendigo	104 Strickland Rd	(03) 5442 3366
Geelong Nth	271 Thompsons Rd	(03) 5272 2654
Mildura	254 Etivanda Ave	(03) 5018 9000
Morwell	4 Saskia Way	(03) 5134 5844
Shepparton	43-45 Benalla Rd	(03) 5821 5144
Wodonga	12a Osburn St	(02) 6024 7922
WA METROPOLITAN		
Canning Vale	57-61 Baile Rd	(08) 9456 6776
Malaga	Lot 8, 51 Kent Way	(08) 9249 3699
Welshpool	234 Welshpool Rd	(08) 9458 5759
WA REGIONAL		
Bunbury	Lot 71 Proffit St	(08) 9721 1217
Geraldton	287 Place Rd	(08) 9964 2807
Kalgoorlie	54 Great Eastern Highway	(08) 9021 1725
Karratha	987 Croydon Rd	(08) 9185 2933
Port Hedland	Peawah St, Wedgefield	(08) 9172 3456

**BOC Limited** 10 Julius Avenue, North Ryde NSW 2113 ABN 95 000 029 729

All savings and offers apply to list price sales of selected items. Bonuses only available with purchase of advertised lines from BOC Gas & Gear Stores. Advertised prices are inclusive of indicated discounts. Every product in this catalogue can be ordered through your local BOC Gas & Gear Centre even though they may not have it immediately available from stock. Not all products advertised may be available in all stores. Additional freight charges may apply in some areas. Promotion prices and offers valid from 01/06/10 until 31/07/10 or while stocks last. Note: While all due care has been taken in the preparation of this document, BOC shall not be liable for any inaccuracies or omissions which may occur herein. BOC reserves the right to change product specifications without notice. ©Copyright 2010 BOC Limited. The stripe symbol and the letters BOC are trademarks of BOC Limited, a member of the Linde Group. Gas & Gear is a trading name of BOC Limited.

MP10-0096 | FDAUS | 0510 | 120K

