

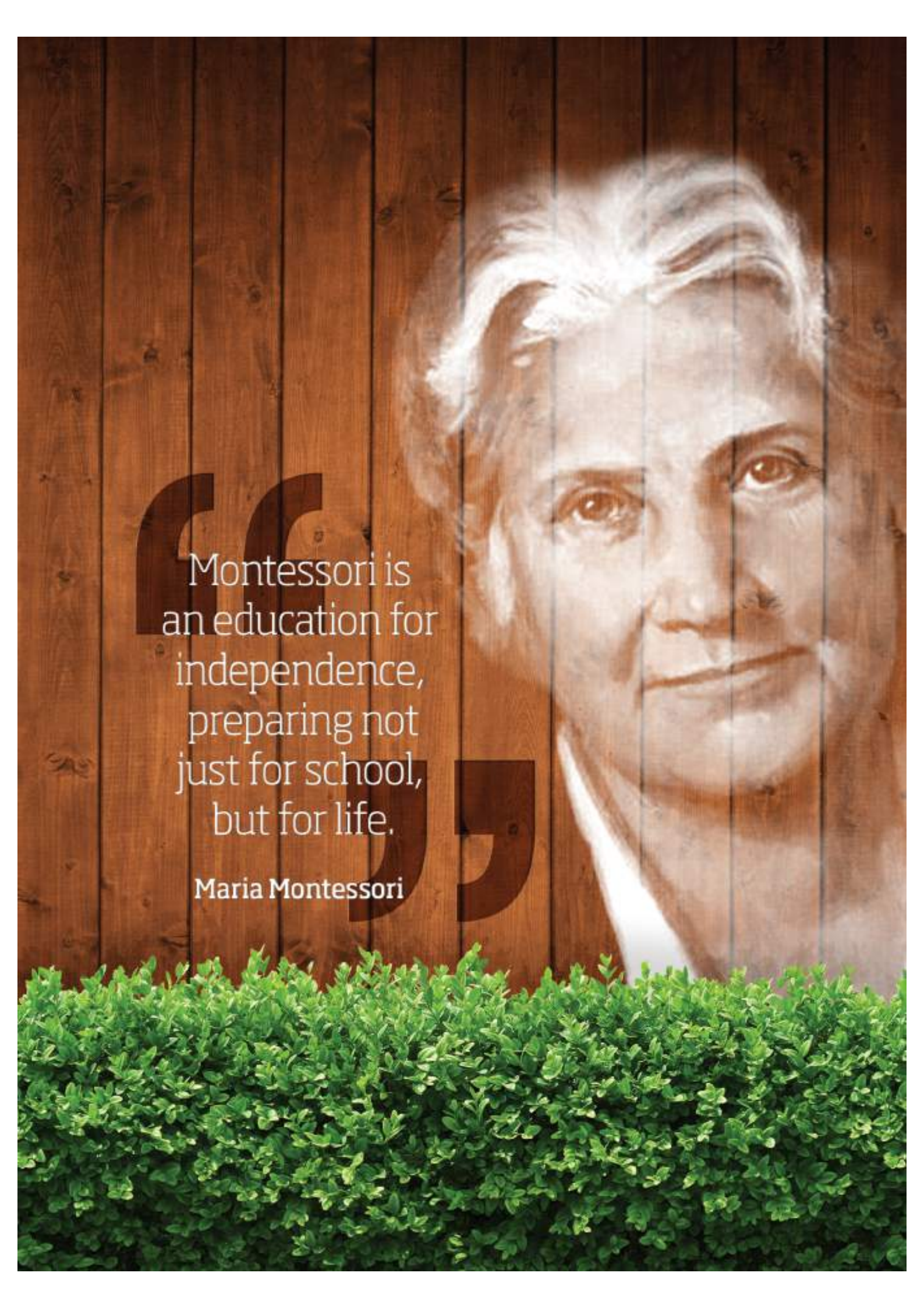
# An Introduction to **Montessori Education**



**MONTESSORI  
ACADEMY™**







Montessori is  
an education for  
independence,  
preparing not  
just for school,  
but for life.

**Maria Montessori**

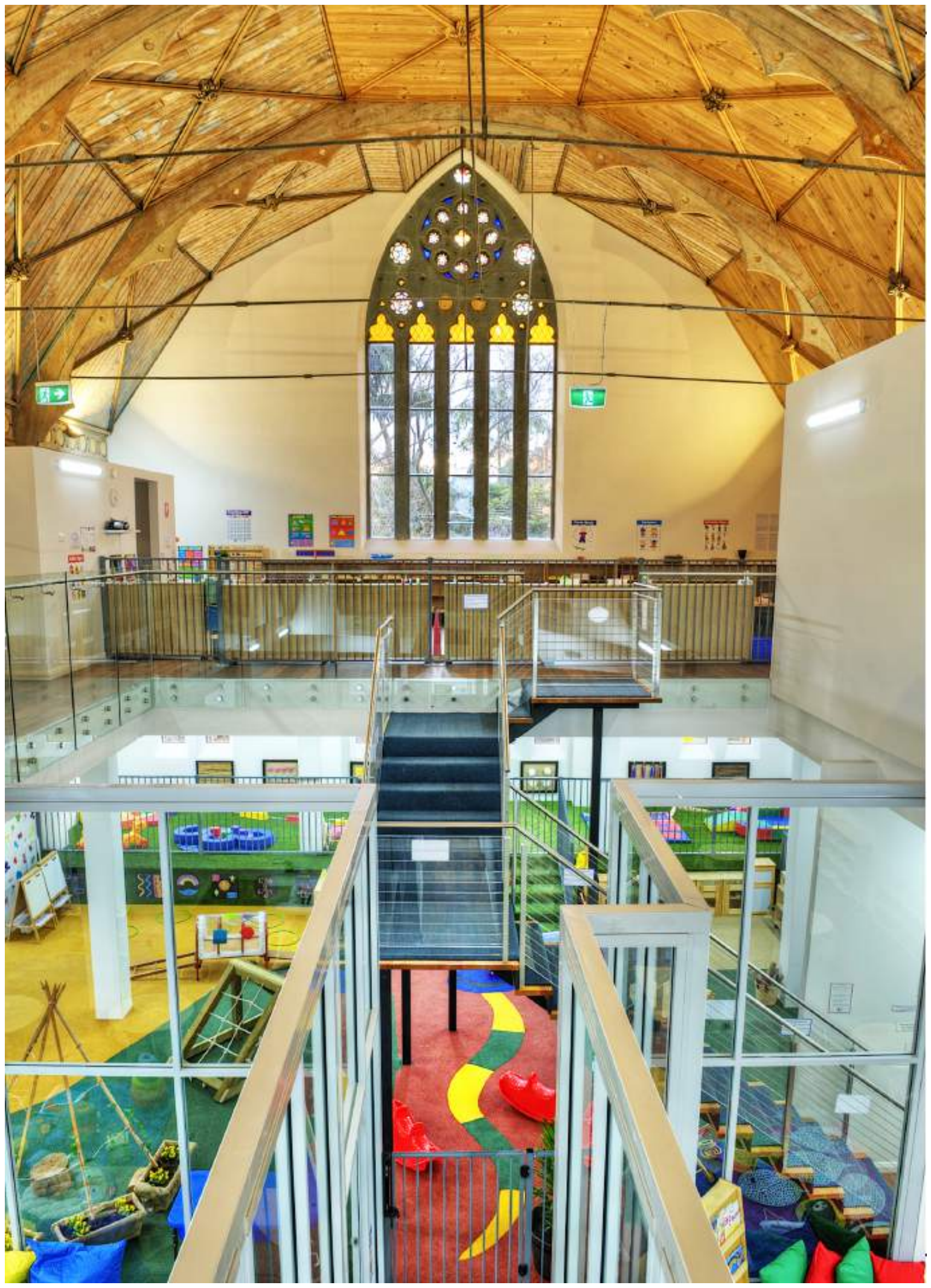


# Contents

About Montessori Academy	<b>1</b>
Our Philosophy	<b>3</b>
The Montessori Method	<b>5</b>
Why Montessori	<b>6</b>
The Montessori Early Years Curriculum	<b>8</b>
Our Locations	<b>11</b>









# About Montessori Academy

Established in 2000, Montessori Academy is Australia's leading and largest provider of Montessori early education for children under the age of six.

Our vision is to provide our students with an exceptional early learning experience that prepares them, not only for school, but for life.

Building on the pioneering educational principles established by Doctor Maria Montessori, we deliver a modern Montessori early learning program that is tailored to the Australian Government's Early Years Learning Framework.

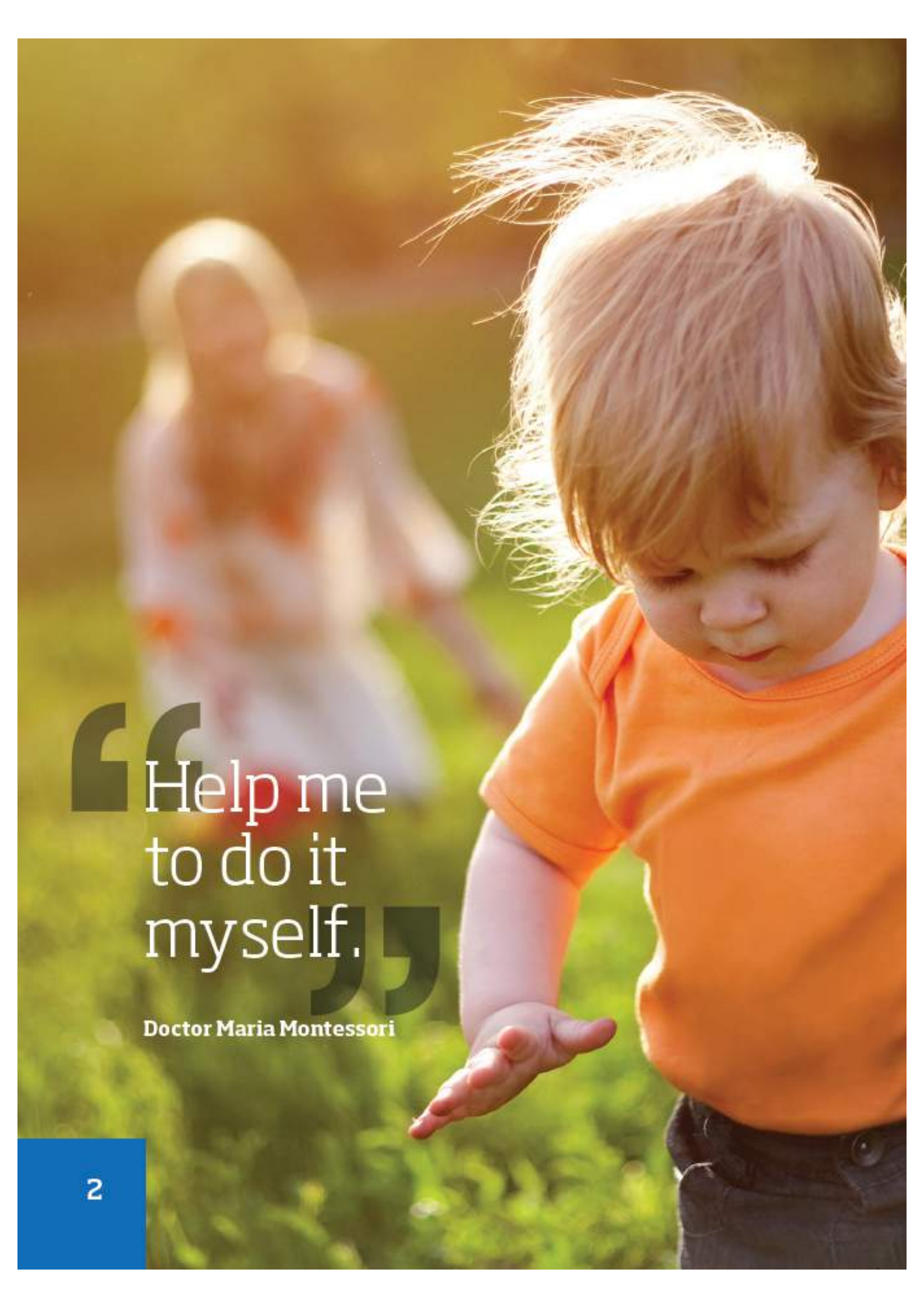
By delivering a blended curriculum, we ensure that our students actively participate in a complete care and education program that integrates the intellectual, emotional, spiritual, physical and social aspects of children's development.

Distinguishing Montessori Academy, is that we take pride in being more than an educational childcare service. Our goal is to partner with our families to facilitate and guide each child's unique development journey, while nurturing and respecting their family, community and cultural background.

Through our commitment to excellence, collaborative partnerships, and a genuine passion for children's education, we aim to help each child achieve their full developmental potential.

With more than 20 locations across Sydney, our purpose built early learning centres truly do prepare our students for school and life success.





“Help me  
to do it  
myself.”

Doctor Maria Montessori



# Our

# Philosophy

**At Montessori Academy, we believe that education is a natural process carried out by the child that is not acquired by listening to words, but by experiences in a prepared learning environment.**

Our approach to early childhood education is grounded in the belief that children have a natural desire to learn, and that the unique developmental needs of each child should be nurtured and respected.

We aim to provide our students with a prepared learning environment that facilitates hands-on learning discoveries that support each child's sense of belonging, confidence, independence and agency.

Our teachers act as the dynamic link between the child and the prepared learning environment. Their role is to prepare the classroom environment, systemically observe their students, and guide them in their learning.

Montessori Academy's Early Years Learning Program is designed to help each child achieve their full development potential by emphasising each child's natural interests and abilities.

By valuing each child as an individual, that is capable of directing his/her own learning, we empower our students with a positive and confident attitude towards life-long learning.







# The Montessori Method



## A Brief History of Montessori Education

**The Montessori approach to early childhood education is based on the pioneering findings of Doctor Maria Montessori (1870 - 1952), Italy's first female doctor and psychiatrist.**

Doctor Maria Montessori developed the principles, methodology, and self-teaching materials associated with Montessori education over more than 50 years. During this time she studied children with diverse cognitive abilities from a vast range of ethnic, cultural and socio-economic backgrounds.

Through her research, Montessori discovered the natural stages of cognitive development in children, multiple pathways to learning, and the link between children's emotional development and their ability to learn at an optimal rate.

Montessori's research into child development, and subsequent findings into how to create the optimal learning environment, came to form the foundations of the Montessori Method.

Doctor Maria Montessori is widely recognised as a pioneer of children's education and human rights. She is also credited with recognising the importance of the first six years of life, 'sensitive periods' for learning, and the importance of hands-on learning. Today, Montessori's ideas continue to shape the evolution of early childhood education.





# Why

# Montessori?

“The child who concentrates is immensely happy.”

Doctor Maria Montessori



## **Why You Should Send Your Child to a Montessori Preschool**

Teachers and Psychologists agree that the child's intelligence undergoes its most important development during the first six years of life. A child's mind is extremely absorbent during these early years, as they unconsciously take in everything from their environment and the world around them. So how does Montessori education prepare children for school and life?

### **Self-Assessment & Self-Made Motivation**

The Montessori classroom is a 'living room' for children. Each area of the Montessori Curriculum is displayed on low open shelves that are ordered, accessible, and visually enticing. The room invites activity, and independence is shaped by the clear availability and self-correcting aspects of the materials. By providing children with freedom of choice, Montessori encourages children to become independent, self-correcting, and self-motivated learners.

### **Social Development and Collaboration**

In Montessori preschools, children are grouped in a two to three year age range. This stable structure to the learning environment facilitates learning through imitation, role modelling, social interactions and co-operation. Within this environment, children develop a strong sense of community and harmony. This ultimately leads to the optimal learning environment for children.

### **Child Centred, Teacher Guided**

The Montessori Method of education is based on the guiding principle: "Follow the child." In the Montessori classroom, the role of the teacher is to observe and guide each child on his/her unique development journey. Learning within the Montessori classroom occurs through hands-on learning experiences that are completely individualised to the child. The flexible nature of the Montessori Curriculum also allows children who are developmentally advanced or behind to progress at their own pace, while nourished by the social interactions of their peers, and the guidance of their teacher.

### **Learning for Life**

Research conducted by Psychologists in the US, published in the 2006 journal *Science*, determined that children who attended Montessori based schools achieved better test results than those who attended systemic schools. The Montessori students achieved improved academic performance in language, mathematics and social skills. The Montessori students were also found to be more creative, socially adjusted, and better able to adapt to changing and complex problems. These skills have been determined to be predictors for later school and life success.

In summary, Montessori education cultivates children's natural desire to learn and achieve their full potential by providing them with the foundations for future growth. Montessori graduates range from the founders of Google and Amazon.com, to Rhodes scholars and artists, through to well-adjusted goal-orientated professionals. Doctor Maria Montessori's understanding of how and why children learn allows the Montessori classroom to create an excellent foundation for children's learning that opens the doors to education for life.



# The Montessori Early Years Curriculum





**At Montessori Academy, we believe that education is an aid and a preparation for life. Our Curriculum is based on Doctor Maria Montessori's findings about the key developmental stages children move through from birth to age six.**

Through scientific observation, Montessori discovered that children move through 'sensitive periods' for learning particular skills, and that if they were provided with supportive learning opportunities to practice these skills, they would make extraordinary progress. She also determined that children learn best at their own pace, and when given a choice of activities that challenge them, not only to master a skill, but to practically apply it.

At Montessori Academy, our Early Years Curriculum emphasises each child's natural interests and abilities, and encourages the practical application of sensory-based, and self-directed learning. Each program builds on the one before it, providing challenges appropriate to both age and skill levels. In this way, Montessori Academy's Curriculum aims to prepare children, not only for school, but for life.

## Key Learning Areas

### Practical Life

Practical Life activities link the home and school. These activities help the child to become more independent, leading to greater self-confidence, and the ability to face new challenges. Practical Life exercises include lessons in grace and courtesy, care of self, and care for the environment. The purpose of these activities is to enhance co-ordination, concentration and independence.

### Sensorial

Sensorial materials were designed by Doctor Maria Montessori to help children express and classify their sensory experiences. The purpose of sensorial activities is to aid in the development of the intellectual senses of the child, which leads to a greater awareness of the world around them. Activities include matching and grading materials that isolate the sense of sight, sound, touch, taste and smell.

### Language

The Montessori language materials are designed to increase vocabulary, and explore both written and spoken language. Through language-based activities, such as the sandpaper letters, children use their muscle memory and sense of touch to learn phonetic sounds. They progress using concrete materials to compose their own written work and read the work of others.

### Mathematics

Mathematical concepts are introduced to the child using concrete materials. Initial explorations with sensorial materials encourage children to learn to count and understand numerical relationships, such as arithmetic, and geometry. Sensorial work prepares the child for a more formal introduction to mathematics, and the introduction of abstract mathematical concepts such as the decimal system and mathematical operations.

### Culture

Cultural materials lead a child to experience geography, natural science, history, music and art through experience that are initially concrete in form. For example, the world is presented as a sandpaper globe allowing the child to feel the ratio of land to water. Through cultural activities, children develop an awareness and appreciation of the world around them.





## Infant Program

Doctor Maria Montessori stated that education should begin at birth. Montessori Academy's Infant Program is designed to nurture the quickly developing Infant as they take their first steps towards independence. The focus of the Infant Program is to assist children in reaching their key development milestones by helping them to develop their psychomotor, fine motor, social and language skills. Our trained Montessori teachers aim to partner with our families to nurture and support each child's unique learning opportunities as they form their intelligence and personality. Materials used in the Infant Program have been carefully selected to fulfill the needs of the quickly changing infant.



## Toddler Program

Montessori Academy's Toddler Program is specifically designed to cater to the needs of young children by establishing a home like environment that encourages sensory based learning. The focus on the Toddler Program is to cultivate this age groups growing need for independence, order, sensory exploration, movement and language. Our program covers the five curriculum areas, with a strong focus on physical education, art and culture. As with any Montessori environment, the children's activities are set out to entice the child to discover and explore. Toddlers work independently, or in small groups, and are introduced to each material at the appropriate time for their individual development.



## Preschool Program

Children aged three to six are sensorial explorers that are constantly building their knowledge of the world by absorbing every aspect of their environment, language, and culture. Our Preschool Program caters to the specific needs of this age group by fulfilling their innate desire to learn through direct sensory experiences with self-teaching materials. Our Preschool Program covers the five key curriculum areas, with science, music, art and physical education playing an important part in the daily curriculum. In this age group, children choose their own activities and work independently at their own pace, under the gentle guidance of a trained teacher. The focus of the Preschool Program is to prepare children for school and help them to develop independence, a strong sense of self, self-motivation, and a love of learning.

## Our Locations

With more than 20 Montessori Academy early learning campuses across Sydney, there's bound to be a location near you!

We would be delighted to invite your family in for a tour of our facilities, introduce you to our team, and provide you with more information about the benefits of Montessori education.

## Contact Us

To book a tour, or to make a general enquiry, please contact us at:

**Phone:** 1300 000 162

**Email:** [info@montessoriacademy.com.au](mailto:info@montessoriacademy.com.au)

**Web:** [www.montessoriacademy.com.au](http://www.montessoriacademy.com.au)

### Our Locations in Sydney:

- Alexandria
- Auburn
- Barangaroo
- Bankstown
- Burwood
- Castle Hill
- Condell Park
- Croydon
- Parramatta Entrada
- Glebe
- Gymea
- Greenacre
- Hoxton Park
- King Street
- Lane Cove
- Leichhardt
- Macquarie Park
- North Parramatta
- Penrith
- Smithfield
- Strathfield
- Victoria Park, Zetland

### Our Locations in China:

- Shanghai Greenhills
- Shanghai Jinqiao
- Shanghai Lingshan



The goal of early childhood education should be to activate the child's own natural desire to learn.

**Doctor Maria Montessori**

**Montessori Academy Head Office**

60 - 70 Parramatta Road  
Summer Hill NSW 2130

**Phone:** 1300 000 162

**Email:** [info@montessoriacademy.com.au](mailto:info@montessoriacademy.com.au)

**Web:** [www.montessoriacademy.com.au](http://www.montessoriacademy.com.au)