



Diesel Quality Services

Fuel quality solutions for all diesel engines.

A division of Pneumark Automation Pty Ltd
28 Lorraine Ave. Lockleys. South Australia. 5032
Tel: +61 8 8352 1812 Mob : +61 419 127 106
www.dieselqualityservices.com.au

DQS-90-TCM mobile tank cleaning machine and DQS-120-TSF pre-filter

DQS-90-TCM



Specifications

Flow rate	90 litres per minute
Voltage	240 V AC 50 Hz
Coalescer water separator	Stubbs WSC-110 (1 ¼" BSP) 20 micron with 90% free water separation.
Magnetic Fuel Conditioner	GM-2600 (1 ¼" BSP. Field serviceable.)
Filter- various	25, 10 and 3 micron fine. 10 and 3 micron water-block.

DQS-120-TSF two stage pre-filter



Specifications

Maximum flow rate	150 litres per minute
Stage 1 separation	90 micron stainless steel mesh strainer
Stage 2 separation	Various filters available - 25, 10 and 5 micron polyester bag type

The DQS-120-TSF pre-filter is designed for use with the DQS-90-TCM tank cleaning machine. The unit is mounted on a high quality aluminium trolley with pneumatic tyres. Manufactured from powder coated mild steel.

The DQS-120-TSF has an excellent free-water separation capability, due to the large volume stilling chamber below the filters.

Capabilities

Tank cleaning of a 2000 litre (heavily contaminated) rail carriage generator fuel tank. This tank had approximately 50 litres of potable water added to the fuel, which was not reported and the carriage remained in service. The rust and microorganism contamination were significant, leading to the failure of two fuel pumps before inspection of the tank finally identified the issue. DQS were called in to :-

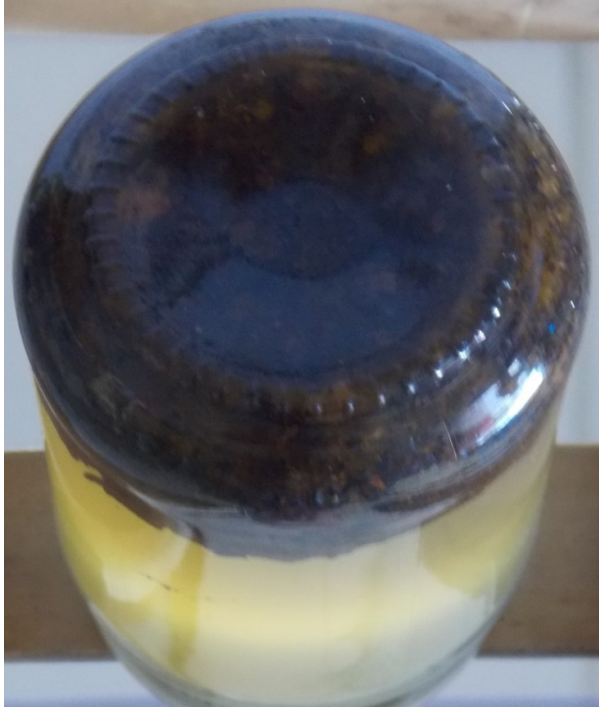
- A. Clean the tank and
- B. Restore the fuel to acceptable quality.



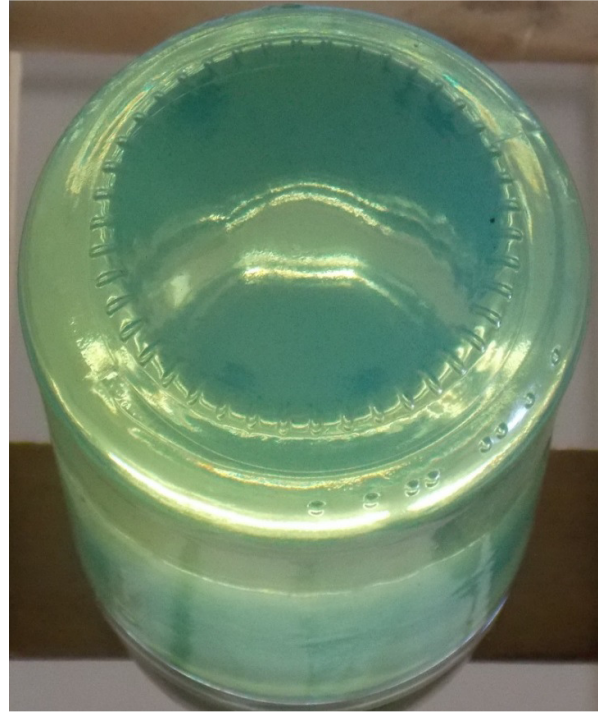
A small amount of the rust removed from the pre-filter.



Samples showing fuel quality improvement during the cleaning process.



Mirror view of pre-clean sample



Mirror view of post-clean sample



DQS-90-TCM (right) and DQS-120-TSF (left) as set up for operation. The rigid suction lance can be seen inserted into the tank port in the fore-ground.