

Think FASTER  
Think STRONGER  
Think INSULATED  
Think INNOVATIVE  
Think SUSTAINABLE

Think...

 **FORMCRAFT**  
*Leading Sustainable Construction*

Sustainable Solutions  
for Commercial Construction

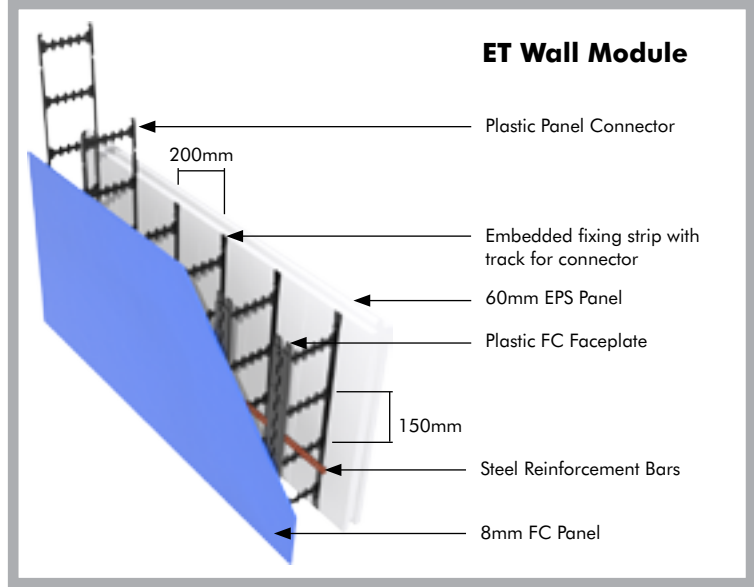
 **FORMPRO**<sup>®</sup>  
*Insulated Concrete Walls*

 **FORMDECK**<sup>™</sup>  
*Insulated Concrete Slabs*

1800 FORMCRAFT  
[www.formcraft.com.au](http://www.formcraft.com.au)

Formcraft is an **innovative** company that represents a new era in the building industry. Driven forward by a **vision** and backed by a **passionate** team, Formcraft is building a **new future** and bringing better products and **better** building outcomes to all.

Insulated concrete forms (ICF) are being rapidly adopted around the world as an energy efficient, fast track and cost effective wall system. Formcraft's FormPro® ICF wall system uses high density expanded polystyrene (EPS) and thin panels to form steel reinforced concrete walls. Once the concrete hardens, you have a wall system that outperforms traditional construction methods.



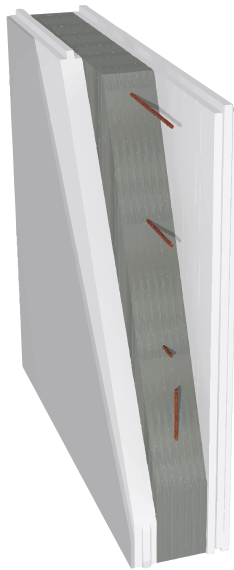
The FormPro® wall system is a modular formwork system that comprises two interchangeable, opposing panels joined by plastic connectors to lock the panels together and hold the steel reinforcement prior to the wall cavity being filled with concrete.

The availability of various connector widths enables each panel combination to be used in creating a variety of concrete thicknesses which can provide an effective solution for any commercial or residential application.

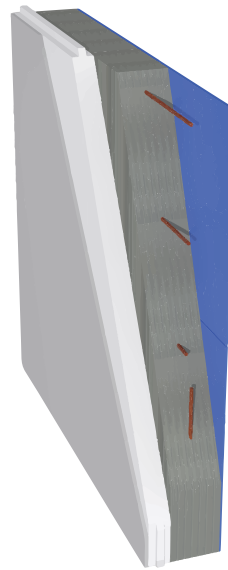
The system allows for the following panel options to be utilised on one or both sides of the forms:

Product Code	Panel Description
E	60mm Expanded Polystyrene (EPS)
R	8mm Rebated Fibre Cement (FC)
P	8mm Fibre Cement (FC) with joint detail
A	8mm Aluminium Composite with joint detail

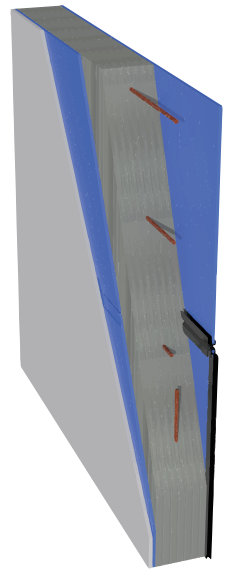
MODEL	WALL	CONCRETE
<b>EE220</b>	220mm	100mm
<b>EE270</b>	270mm	150mm
<b>EE320</b>	320mm	200mm
<b>ET180</b>	180mm	112mm
<b>ET206</b>	206mm	138mm
<b>ET230</b>	230mm	162mm
<b>ET280</b>	280mm	212mm
<b>TT102</b>	102mm	86mm
<b>TT140</b>	140mm	124mm
<b>TT166</b>	166mm	150mm
<b>TT190</b>	190mm	174mm
<b>TT240</b>	240mm	224mm



**EE270**  
150mm Cavity  
60mm EPS (E) / 60mm EPS (E)



**ET206**  
138mm Cavity  
60mm EPS (E) / 8mm FC (R)



**TT166**  
150mm Cavity  
8mm FC (R) / 8mm FC (P)

## installation, training & technical support

Formcraft offers a complete installation service from its experienced construction teams and also provides training, certification and unrivalled engineering and technical support for Designers, Engineers, Builders and Contractors.





The Hay St development in Perth utilises a broad spectrum of FormPro® products throughout. Prefinished panels, insulated interior walls and varied wall thicknesses are all part of the package contributing to exceptional construction, superior energy efficiency and a high quality finished building.

## competitive performance

KEY AREA	FORMPRO® PERMANENT FORMWORK	OTHER PERMANENT FORMWORK	CONVENTIONAL BRICK CONSTRUCTION
In-house Construction Capacity	Experienced, in-house & quality assured construction teams.	Outsourced construction teams.	Outsourced construction teams.
Wall Materials	Variety of interchangeable panel options. EPS, Fibre Cement, Pre-finished FC & Aluminium composite panels.	6mm Fibre Cement only (unfinished).	Brick only (unfinished).
Pre-finishing	Prefinished Fibre cement and/or Aluminium panels available.	None.	None.
External Scaffolding	Minimal scaffolding required due to use of prefinished exterior panels.	Scaffolding required for finishing.	Scaffolding required for finishing.
Wall Thicknesses	11 concrete cavity thicknesses (range: 86mm – 224mm).	5 concrete cavity thicknesses.	Variable according to design.
Compressive Strength	Excellent. Steel reinforced concrete.	Excellent. Steel reinforced concrete.	Medium.
Shear Wall Capacity	Contact area with ground slab 95%.	Contact area with ground slab 70%.	Poor.
Internal Concrete Flow & Consolidation.	Minimum connection surface area for better concrete flow & consolidation.	Much higher connection surface area which may affect consolidation.	N/A
Reo Placement	Easier placement of reo during insertion of connectors.	Difficult. Horizontal reinforcement needs to be fed in along length of wall.	N/A
Reo Positioning	Variety of horizontal rebar positions available (up to 7 per 150mm in wall height).	Only single or double position available.	N/A
Insulation.	Inbuilt insulation saving time and cost. R-values achieved up to 3.5.	Additional time and cost required to insulate exterior walls.	Additional time and cost required to insulate exterior walls.
Impact Sound Reduction	Excellent impact sound reduction by EPS panels.	Poor.	Poor.
Panel Connection.	Strong & lightweight plastic connector (corrosion proof).	Galvanised steel connector. Heavy. May rust over time.	N/A
Service Installation	Services can be chased into EPS panels, saving time and cost.	If single wall element, services must be placed within the wall concrete.	If single wall element, services must be placed within the wall concrete.
Windows & Doors	Sub-frame built in to wall. Ready for installation.	Additional installation, time and cost required.	Sub-frame not included.
Speed of Construction	Very Fast. Components fit together easily and quickly.	Very Fast.	Slow.
Storage and Movement.	Flat-packed for easy assembly = Less storage area.	Finished cassette only, greater bulk.	Bulky pallets. Small heavy components.



## simple building

### EXPERT INSTALLATION

Formcraft employs highly experienced in-house construction teams who can install FormPro® and FormDeck™ efficiently ensuring the highest level of quality.

### STACK

The formwork modules are easily assembled using the Formcraft connection system. It is then simply a matter of stacking the modules on a pre-poured slab to form the walls. The corner and half-size modules bring added convenience to the building system. Formcraft utilises its proprietary sub-frame system for door and window openings.

### BRACE

A lightweight bracing and scaffold system is used to prop the walls and to provide a platform for pouring the concrete. Reinforcement bars are easily inserted prior to the pouring of the concrete to further increase the strength of the walls.

### POUR

Concrete is pumped into the cavity between the formwork panels with a concrete pump. The panels stay in place to become the insulating element of the walls.

**AUSTRALIA'S  
Leading ICF System**







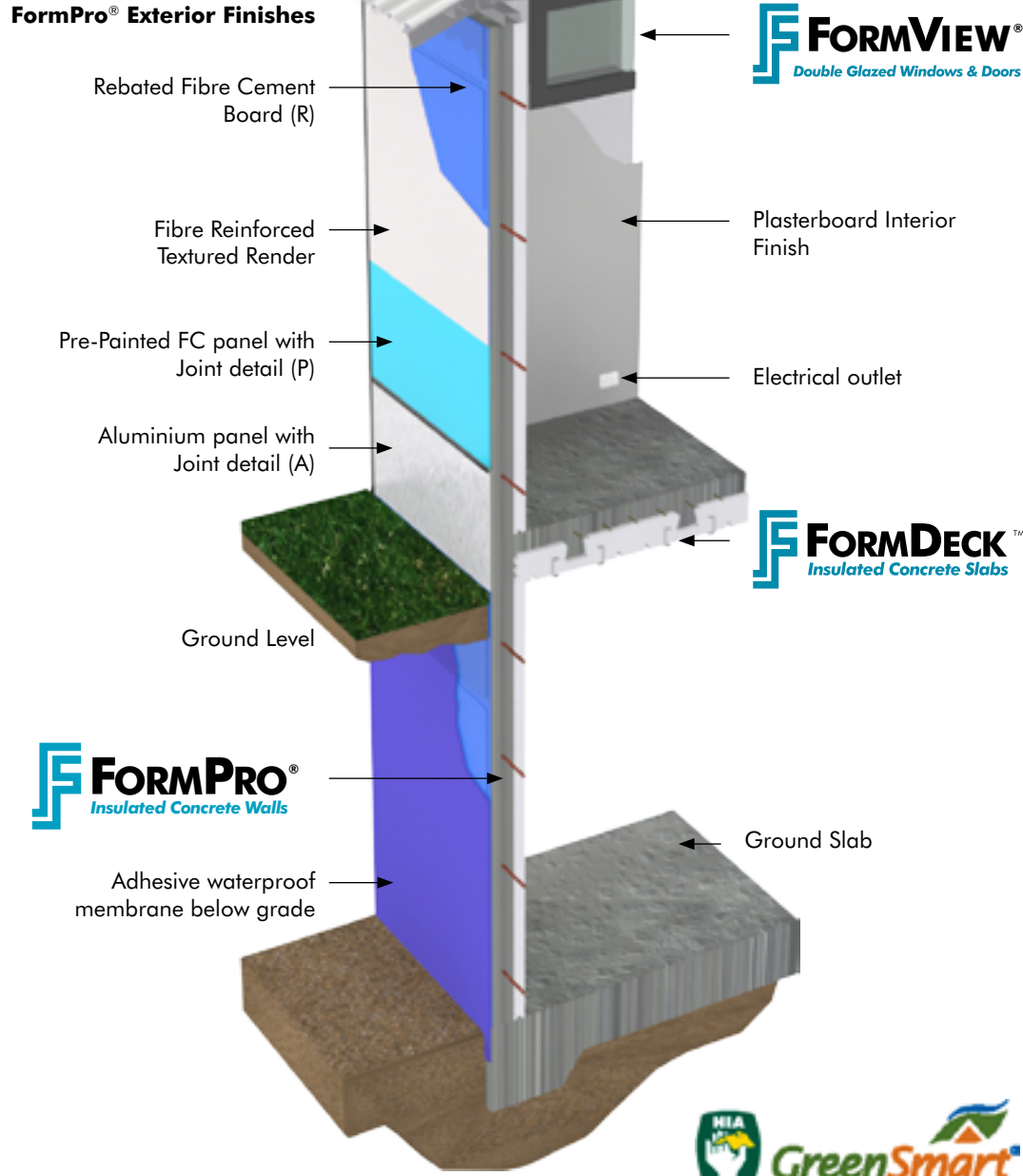
Formcraft offers a range of energy efficient, fast track and cost effective building systems capable of integrating with a range of external finishing systems.



- FormDeck™ significantly reduces concrete usage and thus weight due to the innovative T-beam design.
- Insulating EPS formwork provides better acoustic and thermal performance.
- C purlins support the EPS formwork during the concrete pour and also provide furring strips to fix the ceiling.
- The lightweight formwork reduces craneage and enables faster cycle times.
- The integration of FormDeck™ and FormPro® creates a monolithic superstructure with superior structural performance.
- Service channels are provided in each panel for easy installation of services.



**FormPro® Exterior Finishes**



**AUSTRALIA WIDE AVAILABILITY**  
 Through its network of regional wholesalers and distributors Formcraft can supply its products anywhere in Australia.

**FORMCRAFT**  
*Leading Sustainable Construction*

HEAD OFFICE  
 634 Casella Place Kewdale WA 6105  
 T +618 9353 4161  
 F +618 9353 4162  
 E info@formcraft.com.au

DISTRIBUTOR