

SITE EVACUATION PLAN

CLIENT TRADING NAME

CLIENT BUSINESS ADDRESS

DRAWING NO#

REVISION #

CUSTOMER#

DATE DRAWN:

Pull the Pin
Aim the Nozzle
Squeeze the Trigger
Sweep the Base of Fire

Extinguisher Operating Application Matrix

		A	B	C	E	F
		Ordinary Combustibles Wood, Paper, Plastics etc...	Flammable and Combustible Liquids Incl Petrols and Fuels	Flammable Gases Propane, Butane etc...	Electrical	Cooking Oils and Fats Olive OIL/Fats, Butter etc...
Water H2O		Most Suitable	✗	✗	✗	✗
Wet Chemical		✓	✗	✗	✗	Most Suitable
Foam		✓	Most Suitable	✗	✗	✓
Dry Chemical Powder CO2		✓	✓	✓	✓	✗
Carbon Dioxide		✗	✓	✗	Most Suitable	✓
Vapourising Liquid		Most Suitable	✓	✗	✓	✗
Fire Blanket		✓	✓	✗	✗	✓

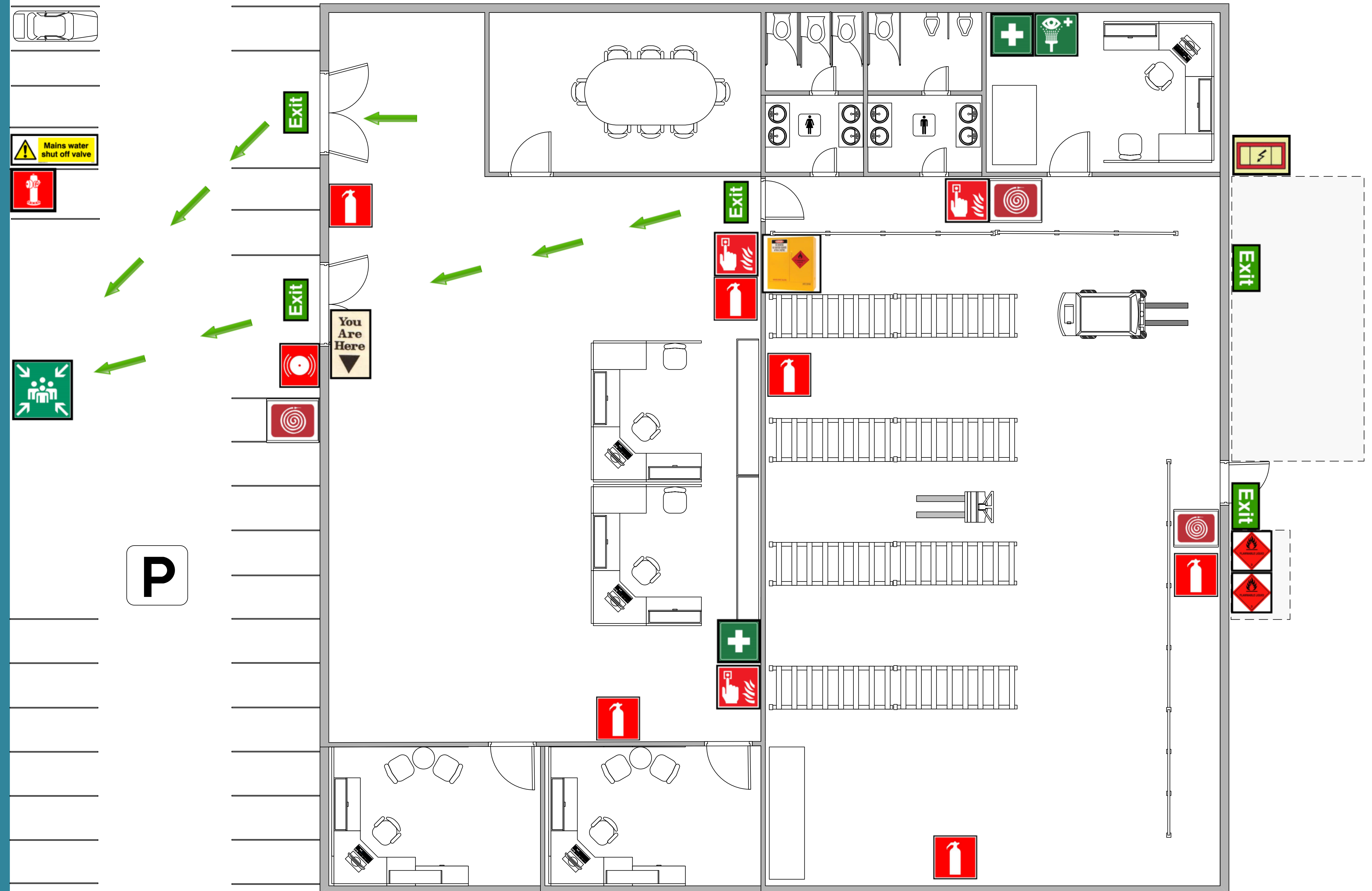
Simmonds Compliance & Consultancy

EVACUATION PROCEDURE

- Consider the .R.A.C.E. Method in the Emergency Situation
- Follow Instructions given by Wardens or Emergency Officers
- Leave Immediately using the nearest Safe Exit, Look for signs of danger and take care while doing so
- Do NOT use Lifts in the event of Fire
- Move quickly, Stay low below Smoke but Do NOT Run
- Move towards and reach your designated Evacuation Assembly Area
- Follow instructions given by Emergency Officers carefully, remain safe from danger
- Report any incident, accident, observation or injury to Wardens and Officers
- Report to an Officer immediately if you are aware of people still inside
- Remain in the Evacuation Assembly Area until told you may leave by Fire Wardens or Emergency Officers

R.A.C.E METHOD

- R** REMOVE PEOPLE FROM IMMEDIATE DANGER
- A** ALERT NEARBY EMPLOYEES AND MEMBERS OF THE PUBLIC TO EVACUATE THEN DIAL **000** OPERATE MANUAL CALL POINT IF APPLICABLE
- C** CONFINE SMOKE & FIRE, CLOSE DOORS & WINDOWS IF SAFE TO DO SO, STAY LOW UNDER SMOKE
- E** EXTINGUISH AND CONTROL FIRE IF SAFE TO DO SO



EVACUATION PLAN KEY

