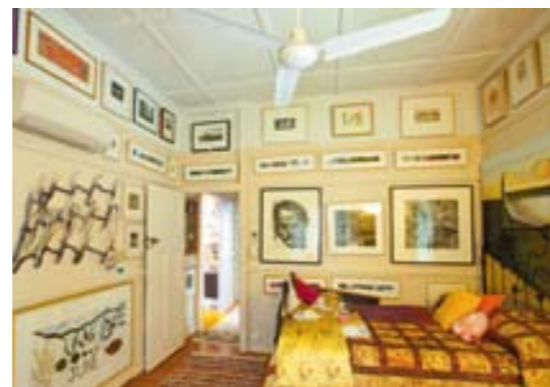




The eclectic colour scheme is reflected in the interior design of the rest of the home.



## A work of art

The owners of this home have eclectic tastes and a passion for art — both reflected in this unusual and eye-catching bathroom

**UNUSUAL** paint colours of pinks and reds against a backdrop of grey/green porcelain wall tiles ensure that this bathroom makes a bold style statement.

The bathroom is located in an old Queenslander home that has had many incarnations. The previous bathroom had already been renovated but it wasn't in keeping with the style of the rest of the home, nor did it suit the preferred style of décor of the owners.

So it was out with the old and in with the new — after a fashion. While this bathroom is a new creation, it relies strongly on a touch of the past, with the 1930s-style pendant lights and the striking cathedral-style antique mirror that is a dominant feature in the room.

The owners are avid art collectors and they wanted their new bathroom to reflect their love of many different art styles, their passion for colour and their search

to create a bathroom space that was welcoming but individual and distinctive.

Various art pieces around the room look very much at home and complement the surroundings. Niches in the shower and the wall near the door show off decorative pieces while providing more practical storage.

A large, open shower with slumped-glass fixed panels, a double-bowl vanity unit and modern, streamlined tapware ensure this bathroom is not just about good looks — it's also very practical. The modern toilet suite is teamed with an old-style railway towel rack, just to keep that element of visual surprise going.

The previous bathroom was quite dark and this problem has been overcome by the inclusion of a larger slumped-glass window matching the shower screen that's set high so it doesn't detract from the tiled and painted walls.

The end result is a bathroom that blends perfectly with the rest of the home and meets all the customers' expectations.

### fact file

**THE** bathroom was designed by Maureen and Henri van Roden in conjunction with the clients and built by **ALL BATHROOM GEAR PTY LTD** 46 Ipswich Road, Woolloongabba Brisbane Qld 4102  
**PHONE** (07) 3391 8628 **EMAIL** allbathroomgear@aapt.net.au **WEBSITE** www.allbathroomgear.com.au  
**SHOWER** 10mm toughened slumped glass by Euroglass **BASIN** CSG Phoenix vitreous china top with double integral basins **TOILET** Cotto Nelly wall-faced pan toilet suite with soft-close seat  
**VANITY** Custom-built by Kitchens by Alliance finished in gloss two-pack with colour mixed by client  
**TAPS** Methven Amio Exposure overhead and handshower combination and Amio chrome mixer taps to basins **ACCESSORIES** Avenir Bizu towel rails, hand towel holders, toilet roll holder and robe hooks **WALLS** Gloss rectified porcelain tiles in grey/green. Walls above the tile line painted with Dulux Hot Pink high-gloss acrylic, ceiling with Dulux Wildfire high-gloss acrylic **BORDERS** Trims painted with Dulux Hot Pink gloss enamel — painted by Mrs Painting Brisbane **MIRROR** Cathedral-style, antique-look segmented mirror from Mirror Image, Brisbane **FLOOR** Matt porcelain tiles in deep grey **LIGHTS** 1930s pendants **COST**, approximately, for design, manufacture, tiling, installation, plumbing and electrical, \$32,000

