

SUPRA





Supra Boats

BEYOND BETTER

Intro	02
Standards Refined	04
Performance	06
Vision/Power	08
Continuous improvement	10
Boat intro	12
Launch 242	14
Launch 22V	16
Launch 21V	18
Sunsport 20V	20
Ownership	22
Worlds Collide	24
Supra Stars	27
Color me Supra	28
Engines/Specifications	30

Better IS ONLY the beginning.

From interior and exterior design to ride, wake and handling performance to the team that puts it all together, Supra boats are beyond better. Buzz Brand of the Year, six consecutive Excellence in Customer Service Awards and a 2011 Innovation Award say a lot. But we are focused beyond the recognition on a path toward refinement. It is not enough to be performing at an award-winning level that is just above the competition. Supra is driven by continual improvement even if that means one-upping ourselves to provide superior luxury performance. "Better" only begins to describe this company and these boats.



Standards refined

Refinement is a theme you will find throughout the Supra line, especially on the inside. Supra interiors accommodate and comfort with beauty and function that is constantly being perfected. The result is functional luxury, that leads to a tailored user experience. Supra boats can be ordered with a playpen bow as a Launch Series model or with a walk-through bow as a Sunsport. The Clarion-Polk Sound System continues the Supra experience with high quality tunage

standard. Supra boats can even change your point of view with the industry-first electronic height adjustable driver's seat. The trip from the luxurious interior to swim step has been protected in the 2012 Launch 22V with a rear seat step that leads to the transom walkover. Double-up seating converts the wrap-around lounge to a stadium environment keeping the action in front of you with comfortable support behind. Supra is raising your standards to luxury.





Handling and rough water ride are unmatched in a Supra. The signature Deep-v Keel allows these boats to slice through even the roughest water with ease. With specifically designed hull bottoms Supra boats work with water characteristics to bolster ride and handling without sacrificing smooth slalom wakes.



PERFORMANCE



REFINED

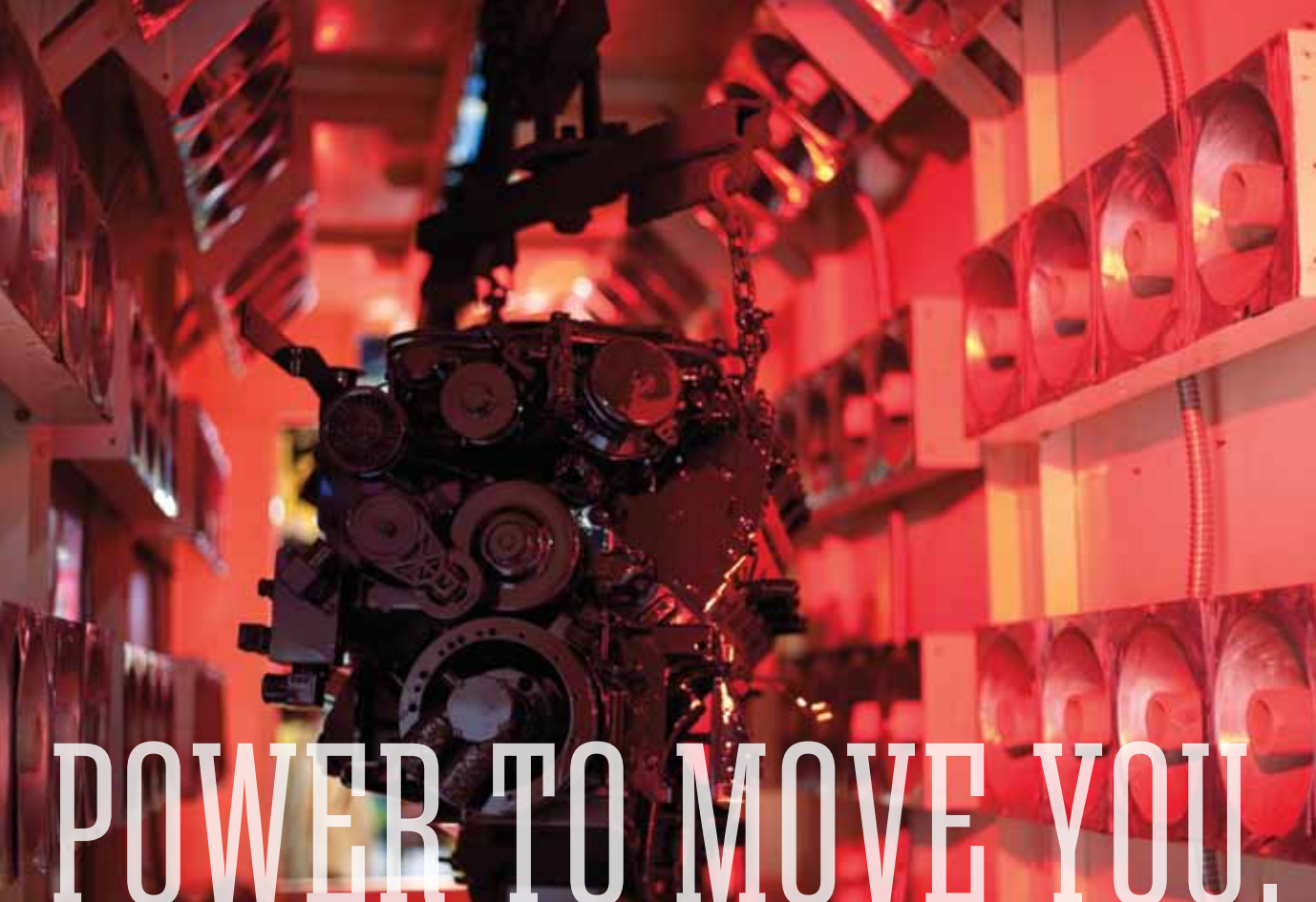
When it is time to ride, the shape of the Supra hull serves a whole other purpose; commanding the flow of water beneath the back of the boat for perfectly shaped ramps, no matter what the wake sport. Supra wakes can be whatever you need with a customizable shape con-

trolled by the SmartPlate and wake size that swells with Gravity III Ballast levels. Different capacity sacks are interchangeable as a part of this plug and play ballast system and all of this is controlled effortlessly at the dash. Wake boats that work for you.



As the epicenter of the driver's area, the 2012 VISION adds industry leading viewing size to its list of customer-centric features. Standard in every Supra boat, the new 7-inch screen joins easily customizable user profiles that control wake shape and size as well as speed. Even in direct sun, Supra's VISION

provides a user-friendly graphical interface for standard GPS chart plotting with tracking and depth, ZeroOff GPS speed control, SmartPlate adjustment, Gravity Ballast control, iPod® and iPhone® interfacing, live video viewing and playback, stereo control, full engine diagnostics with codes and more.



THE POWER OF SIGHT. THE POWER TO MOVE YOU.

In water sports it is not enough to simply throw horse power in a tow boat. The power band of these precise machines needs to be weighted towards the low end with snappy out of the hole torque and consistent top end speed. No one understands this charge bet-

ter than the power behind more Boat of the Year Awards than any other marine engine manufacturer, Indmar Marine Engines. Through a close partnership with Indmar Supra Boats not only boasts some of the best power plants in the industry, but the best innovation.



The new 345 Assault CAT engine, built exclusively for Supra by Indmar Marine Engines for extreme wake sports earned a 2011 Innovation Award at IBEX. The first of it's kind, the 345 Assault CAT engine was developed by Indmar in cooperation with Supra Boats to perform and protect when pulling wake making sports. A specially designed 7 quart oil pan and air-oil separator prevents oil induction to the PCV during monster wakesurfing sessions. This Supra engine was engineered to help boat owners take full advantage of its 345 horsepower and amazing 370 ft-lbs of torque day after day on the water.



At Supra Boats we have a different point of view on tow boat construction. The men and women building Supra Boats take themselves out of the equation, looking at each step in production from the outside with the goal of continuous improvement. From meticulous mold conditioning and perpetration to precise gel coat application at 22mils coverage to the optimum ratio of fiberglass to resin in Supra's Perfect Surface skin coat procedure to the sure-fit of the shoebox deck and hull merger, Supra boat construction is constantly refined by the individual building the boats. Ideas for advancement in quality and efficiency are not limited to upper or even middle management.



Change your expectations.



Everyone on the line from the team leader to the newest member is encouraged to improve their area as well as any other step in production where they see a need. Employees are regularly rewarded for their ideas and most are put into action. The result is a factory full of quality control experts who are personally vested in the superior quality of Supra boats.



Awards IN MOTION.

The 2012 boat line has generated even more model advancements than awards. The new VI-SION dash, new 22V interior, new exclusive 345 Assault wakesurfing engine, new electric height adjustable driver's seat and new World's Edition graphics are just a few leaps forward making their home in this year's Supra line-up.



Professional ride plush recovery.



Pro riders gravitate towards this sleek 24-footer for the accommodating 17-person interior as much as the performance and wakes. There's a lot to be said for a plush place to recover and professional riders like Amber Wing are on board with Supra's style of comfort. Amber especially appreciated the comfort and the performance of her Supra this year while she trained for and won Queen of Wake and Best Women's Rider. The wide seating gives you the ability to kick back and slide into the luxurious interior with full support. Double-up convertible rear-facing seats

take the strain out of being a spectator. Of course when it's "game on," riders want to be behind the 242 where the Gravity III ballast system swells to an industry-leading 1700 pounds, the SmartPlate refines shape and the wakes Launch. Take the reigns on all of this performance with the VISION dash controlling speed, wake size, wake shape and tailoring those settings for specific riders. The Supra Launch 242 is the ride of your life inside and out.



Length: 24'1" (7.35m) | Beam: 102" (2.59m) | Draft: 26" (.66m) | Weight: 4,200 lbs (1905.09kg) | Capacity: 17 people | Fuel: 68 gals (257.41L) | Ballast: 1,700 lbs (771.11kg) | Std Engine: 345 HP 5.7 L MPI w/ CAT

Geared for having it all.



The Launch 22v is the perfect combination of size, refinement and performance. This 22.5-foot wakeboard boat welcomes a crew of 15 with room for gear and an interior geared toward luxurious accommodation. Completely redesigned for 2012, the 22V interior brings together intricate sections of multi-textured Syntec Nanoblock vinyls with the durability of exclusive Gore Tenara thread. Triple density foam construction makes the Launch interior as comfortable as it is eye-catching. Supra has made the high-traffic path from the lounge to the swim step

worry-free with a newly tooled rear seat step and transom walk-over covered in SeaDeck no-slip padding. The wakes are pro caliber and controllable with cockpit switch or the VISION dash, but the 22V is as much about the drive as it is the ride. Slicing through rough water with flat precise turns, the 22V is exhilarating to drive. The high and slow speed maneuvers are almost as impressive as you will look pulling them off. Available with a walk-through bow as a Sunsport or with the Launch playpen, the 22V captures your water sports boating lifestyle.



Length: 22'6" (6.86m) | Beam: 100" (2.54m) | Draft: 25" (.64m) | Weight: 3900 lbs (1769.01kg) | Capacity: 15 people | Fuel: 50 gals (189.27L) | Ballast: 1450 lbs (657.71kg) | Std Engine: 330 HP 5.7 L MPI w/ CAT





A custom ride from the words, "hit it!"



The Supra Launch 21v is known for producing big air under even novice riders. The walls of wakes this Supra produces give beginning to intermediate shredders the momentum they need to get up and over aerial moves. Thanks to the customizable rider profiles housed in Supra's VISION dash, wake riding sets can be tailored to individual skills with extreme precision. Wake shape, size and boat speed can all be programmed to preference. The Launch 21V offers all of this wake performance without forgetting about what's on the inside. Deep supportive

seating frames a boat load of storage to accommodate as many as 14 and their gear on the lake. A huge insulated ice chest complimented by oversized cup holders adds to the 21V's accommodation. Take into account the new standard Clarion-Polk Audio Sound System, customizable seating like the extended observer's leanback and the choice of bow configurations with the walkthrough Sunsport and playpen Launch series models. The 21V is not just about accommodation but a truly individual experience.



Length: 21'4" (6.5m) | Beam: 99" (2.51m) | Draft: 25" (.64m) | Weight: 3800 lbs (1723.65kg) | Capacity: 14 people | Fuel: 50 gals (189.27L) | Ballast: 1450 lbs (657.71kg) | Std Engine: 330 HP 5.7 L MPI w/ CAT

Crowd pleaser.



Because agreeing on one water sport is even more impossible than agreeing on what movie to see or which restaurant to go to, Supra designed this boat so you don't have to choose. The Supra Sunsport 20V offers amazingly scalable performance that covers the entire wake spectrum. No sacrifices necessary. Mom and dad can keep their smooth slalom cuts without compromising the swells that keep the boarders happy. Together with the compact stature of the 20V and its nimble handling there is no downside. The smallest of the Supra models boasts room for 10 with enough storage to tuck 10 people's stuff neatly away.

1200 pounds of Gravity III ballast is there when you need it and quickly emptied when you don't. This type of control is multiplied at the dash with VISION. The driver commands ballast levels, wake shape and ZeroOff speed control standard. Whether you are hammering down on the new Indmar Assault 330 horse power engine with catalyst to get across the lake or cruising and cranking the tunes on the Clarion-Polk Sound System, the 20V delivers. All of this and a anodized brushed aluminum tower outfitted with standard swivel board racks to compliment this 20-footer sporty profile.



Length: 20'8" (6.3m) | Beam: 95" (2.41m) | Draft: 24" (.61m) | Weight: 3300 lbs (1496.85kg) | Capacity: 10 people | Fuel: 39 gals (147.63L) | Ballast: 1200 lbs (544.31kg) | Std Engine: 330 HP 5.7 L MPI w/ CAT





SUPRA FUN



We understand that your time together is valuable and strive to maximize your enjoyment on the water. We accomplish this with a refined well appointed interior and professional level performance that is built to last. If things go wrong Supra Boats' award-winning customer service and Limited

Lifetime warranty kick in. The Supra ownership experience continues with videos and information on the 2011 iPhone/iPad app. Keep in touch through supraboots.com, on Facebook or on Twitter. Sign-up for the Supra Times enewsletter to have the latest delivered directly to your email account.





WORLDS COLLIDE



Official towboat of the WWA World Wakeboard Championships, the World's Edition Supra has been redesigned for 2012. Available on any Sunsport or Launch Series model, the World's Edition Package takes an amazingly equipped Supra boat and raises it to pro tournament levels. Powered by an Assault engine from Indmar, the World's Edition is geared for extreme performance. Exclusive World's exterior graphics and a custom swim step pad join a Supra Progressive Tower with a Roswell 4-Speaker Light Bar and Z-5 Cargo Rack. The World's Edition also pumps up the volume with 2 additional amps, a Polk Subwoofer and an onboard dual battery charger. Even the World's Boatmate trailer is over the top with a tandem axles, 18" custom wheels, two tone fenders, aluminum step plates, illuminated laser cut steps, LED lighting and much more.



From Pros to Joes to Joe's kids, Supra is the tow boat of choice.



The 2011 Rockstar Energy WWA Wakeboard World Championships presented by Supra Boats went off in Indianapolis. Bringing together the World's best professional riders to go head to head behind the Supra Launch 242, the event drew a huge crowd. Team Supra's own Reed Hansen took home his 5th World Wakeskate Title. Supra Boats

also tore up the water as the official tow boat of Liquid Force's BroStock and toured the country towing INT League Events. Also known as "the little league of water sports," INT holds a special place in our hearts and behind Supra boats. Supra's pulling for amateurs and pros at the best events in the world. Come along for the ride!

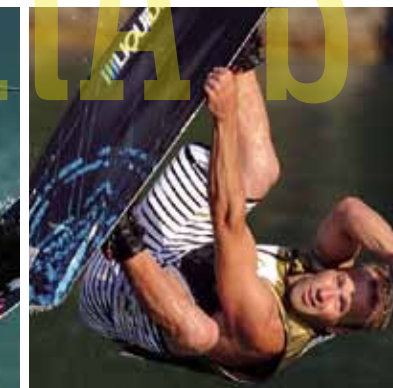


SUPRA STARS

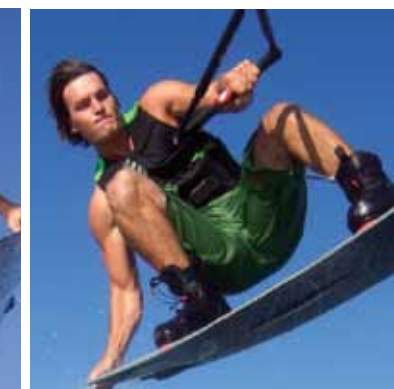


PROS
Austin Hair
Ben Greenwood
Clay Frayley
Josh Sanders
Reed Hansen
Trevor Hansen
Amber Wing
Taylor McCullough

JUNIOR PROS
Bradley Teunissen
Cory Teunissen
Jacob Valdez



The Supra Boats Pro Team is much more than a group of sponsored athletes. These individuals have been with us through thick and thin. We are big fans of our team as people, as testers and as competitors. They are dedicated ambassadors of the boat brand that helps them win, but they are also people of character.



That is a big reason why they succeed. Pro Wakeboarder, Amber Wing had a big year taking home the coveted Queen of Wake and Best Women's Rider Award. Pro Wakeskater, Reed Hansen won his 5th World Title and Rider of the Year. We couldn't be more proud of Team Supra.



Rider of the year for Alliance Wakeboard Magazine and Transworld Wakeboarding Reed Hanson and Amber Wing.





World's Edition Pattern

COLOR ME SUPRA

20 SERIES PATTERNS



21 SERIES PATTERNS



22 SERIES PATTERNS



242 SERIES PATTERNS



LIQUID FORCE SERIES PATTERN



NOTE: Upcharge for hull and deck upgrades.

GRAPHICS OPTIONS

CHROME



MATRIX



REFLEX



CELTIC FLAME

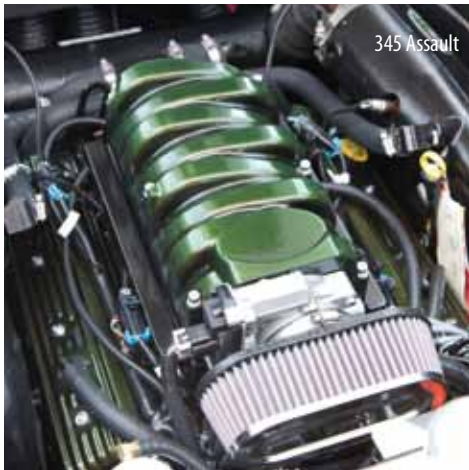


COLOR OPTIONS

BASE COLOR: WHITE	ACCENT: BLACK	ACCENT: REUBEN	ACCENT: PACIFIC	
BASE COLOR: PLATINUM	ACCENT: CHARCOAL	ACCENT: SUNSET ORANGE	ACCENT: FIRE RED	ACCENT: LIME
BASE COLOR: SANDROCK	ACCENT: CELESTIAL BLUE	ACCENT: FOSSIL	ACCENT: BRITTANY	ACCENT: SUNDANCE YELLOW

ENGINE

30



345 Assault

Assault 345 CAT Indmar ETX CAT 5.7L V-8 345HP EFI Engine with Catalytic Converter. Optional on all models The First of its Kind. Imagine an inboard built to protect itself from the rugged watersports it powers day after day. The WakeSurf protection features alone, gives reason why to upgrade to this iconic, soon to be imitated premium engine. The oil pan holds 7 quarts. An air –oil separator device adapts the engine to your driving style and watersport activities to prevent oil induction into the PCV. The 345 Assault was engineered to take full use of its horse power and 370 lb-ft of torque for astonishingly quick yet silky smooth acceleration in even the worst marine conditions. Include 2012 IBEX Award Logo or mention.



330 Assault

Assault 330 CAT Indmar 5.7L V-8 330HP Engine with Catalytic Converter More Horsepower. More Fuel Efficient. Undisputable Durability. The all new 2012 Assault Cat flaunts more horsepower and more fuel efficiency than its non-cat predecessor while delivering undisputable durability with very little required maintenance. From it's athletic performance in the most rugged marine conditions to its impressive clean and fuel efficient drive, the all new Assault 330 CAT turns technological innovation into polished power with its every move.



420 Assault

Assault 420 CAT Indmar ETX CAT 6L 420 HP Engine with Catalytic Converter provides Endless Brute Power and Low End Torque. This 6L Assault commands 420 horsepower and 400 lb-ft of peak torque to keep your adrenaline flowing. Take to the water like never before with dynamic variable valve timing and hydraulic cam phaser to retard cam timing for low end torque and advanced cam timing for high rpm horsepower. It's the smallest of details, like spark plugs with self cleaning properties and top mount starters that define the undisputable performance and durability of the Assault 420.

	Sunsport 20V	Sunsport 21V	Sunsport 22V	Sunsport 242	Launch 21V	Launch 22V	Launch 242
EXTERIOR							
Gelcoat - 3 Base Colors / 11 Accent Colors	S	S	S	S	S	S	S
Gelcoat Patterns (see charts for full description)	S	S	S	S	S	S	S
Thermocal Graphics	S	S	S	S	S	S	S
Stainless Steel Rubrail, Charcoal	S	S	S	S	S	S	S
Stainless Steel Rear Grab Handle	S	S	S	S	S	S	S
Stainless Steel Transom and Bow Eyes	S	S	S	S	S	S	S
Stainless Steel Trimmed Swim Platform	S	S	S	S	S	S	S
Cast Pop-Up Cleats (4 total)	S	S	S	S	S	S	S
Removable Fiberglass Platform w/ Custom Non-Skid	S	S	S	S	S	S	S
INTERIOR							
Safety-Glass Stainless Header Curved Walk-Thru Windshield	S	S	S	S	S	S	S
Syntec® Knit-Back 360 Stretch Vinyl w/ Nano Stain Resistant Topcoat	S	S	S	S	S	S	S
Syntec Deep Pile Fast Dry Trackless Carpet (Sterling or Suede)	S	S	S	S	S	S	S
Interior LED Accent Lighting	S	S	S	S	S	S	S
Stainless Steel Interior Hand Rails	S	S	S	S	S	S	S

	Sunsport 20V	Sunsport 21V	Sunsport 22V	Sunsport 242	Launch 21V	Launch 22V	Launch 242
INTERIOR							
Vinyl Wrapped Front Opening Glovebox w/ Billet Aluminum Door	S	S	S	S	S	S	S
Storage Lighting	S	S	S	S	S	S	S
Rear-Facing Observers Seat w/ Storage	S	S	S	S	S	S	S
The Basement In-Floor Oversized Storage Locker	NA	S	NA	NA	NA	S	NA
In-Floor Storage Locker	S	NA	S	S	S	NA	NA
Rear Storage w/ Gas Assist Shocks	S	S	S	S	S	S	S
Bow Storage	S	S	S	S	S	S	S
Rear Sundeck - 3 Piece	S	S	S	S	S	S	S
Built-In Stainless Steel Beverage Holders	9	12	16	14	12	16	14
Built-In Cooler	S	S	S	S	S	S	S
Sundeck Stepway	S	S	NA	S	S	NA	S
Walk Across Sundeck	NA	NA	S	NA	NA	S	NA
Walk-Thru Seating and Storage	S	S	S	S	NA	NA	NA
Playpen Seating and Storage	NA	NA	NA	NA	S	S	S
Triple -Up Flip-Up Seats	NA	NA	S	S	NA	S	S
Double-Up Flip-Up Seats	NA	NA	NA	NA	S	S	S
Convertible Rear-Facing Stadium Seating	S	NA	NA	NA	NA	NA	NA
DRIVER'S AREA							
Wrap-Around Supra Helm Station	S	S	S	S	S	S	S
Supra VISION System (w/ GPS Mapping, Ballast Indicators, Zero Off)	S	S	S	S	S	S	S
ZeroOff GPS Cruise	S	S	S	S	S	S	S
Billet Aluminum Dash Bezel	S	S	S	S	S	S	S
Vinyl Wrapped Dash Brow	S	S	S	S	S	S	S
Full Instrumentation - Tach, Speedo, Fuel, Oil, Temp, Volt, Hour	S	S	S	S	S	S	S
Custom Adjustable Driver's Seat w/ Swivel	S	S	S	S	S	S	S
Electric Height Adjustable Driver's Seat	NA	S	S	S	S	S	S
Rise-R Driver Seat Elevation System	S	S	S	S	S	S	S
Cipa™ Full-Size Mirror	S	S	S	S	S	S	S
Extended Mirror Arm with Cipa™ Extreme Tournament Mirror	O	O	O	O	O	O	O
Teleflex® Tilt Steering Column	S	S	S	S	S	S	S
12-Volt DC Receptacle (3)	S	S	S	S	S	S	S
SAFETY							
Safety Lanyard - Emergency Engine Shut Off Switch	S	S	S	S	S	S	S
Center T-Handle Drain	S	S	S	S	S	S	S
Rear Drain	S	S	S	S	S	S	S
Fire Extinguisher	S	S	S	S	S	S	S
Electronic Auto Bilge Pump System w/ Screen	S	S	S	S	S	S	S
Bilge Blower	S	S	S	S	S	S	S
Through-Hull horn	S	S	S	S	S	S	S
UPHOLSTERY OPTIONS							
Bow Filler Cushion (Walk-thru only)	O	O	O	O	NA	NA	NA
Walk-thru Screen (Snap-in)	O	O	O	O	NA	NA	NA
Drop In Carpet Overlay	O	O	O	O	O	O	O
PACKAGE OPTIONS							
World's Package - 21V, 22V, 242	NA	O	O	O	O	O	O
World's Package - 20V	O	NA	NA	NA	NA	NA	NA
Liquid Force Package	NA	NA	NA	NA	NA	O	NA
TOWER OPTIONS							
Progressive Tower, Black w/ Swivel Board Racks	NA	S	S	S	S	S	S
Breakaway Rail Tower, w/ Swivel Board Racks	S	NA	NA	NA	NA	NA	NA

31

	Sunsport 20V	Sunsport 21V	Sunsport 22V	Sunsport 242	Launch 21V	Launch 22V	Launch 242
ENGINE AND DRIVE SYSTEMS							
Indmar Assault™ 330 HP 5.7 L MPI Engine w/ CAT ETX w/ Zero Off	S	S	S	NA	S	S	NA
Indmar Assault™ 345 HP 5.7 L MPI Engine w/ CAT ETX w/ Zero Off & Surf	O	O	O	S	O	O	S
Indmar Assault™ 420 HP L96 6.0 L MPI Engine w/ CAT ETX w/ Zero Off	NA	O	O	O	O	O	O
Fuel Pump In-Tank	S	S	S	S	S	S	S
Quick-Change Oil Drain	S	S	S	S	S	S	S
Remote Oil Filter (V-drives only)	S	S	S	S	S	S	S
Silencer Exhaust Mufflers	S	S	S	S	S	S	S
Aquamet® Stainless Steel Shaft	S	S	S	S	S	S	S
Teleflex® Tournament Controls - Drive by Wire Throttle	S	S	S	S	S	S	S
Rack and Pinion Steering	S	S	S	S	S	S	S
Flush Kit	O	O	O	O	O	O	O
Fresh Water Cooling System for Salt Water (available on 345HP only)	O	O	O	O	O	O	O
Water Strainer	O	O	O	O	O	O	O
PERFORMANCE							
Zero Off GPS Cruise	S	S	S	S	S	S	S
Swivel-Head Pylon	S	S	S	S	S	S	S
Gravity III Ballast w/ 3 Bags (1 front, 2 rear)	S	S	S	S	S	S	NA
Gravity III Ballast w/ 3 Bags and Belly Tank (1 front, 2 rear)	NA	NA	NA	NA	NA	NA	S
Dual Tracking Fins	S	S	S	S	S	S	S
4-Blade Prop OJ Fusion (14.25 x 14.5) General Performance	S	S	S	S	S	S	S
4-Blade Prop Acme 537 (13.5X16.5) General Performance	O	O	O	O	O	O	O
4-Blade Prop Acme 1235 (14.5x14.25) Wakeboard	O	O	O	O	O	O	O
4-Blade Prop OJ XMP (14.75X13) Wakeboard/Surf	O	O	O	O	O	O	O
Mid-Hull Paddle Wheel for Speedo Pickup	S	S	S	S	S	S	S
Smartplate Technology - Automatic Multisport Wake Plate	S	S	S	S	S	S	S
AUDIO/VIDEO OPTIONS							
Package A - AM/FM CD, USB, Aux-in MP3, Remote, Sirius Ready	S	S	S	S	S	S	S
Add Package B (2 Tower Speakers w/ additional 2-Channel Amp)	O	O	O	O	O	O	O
Add Package C (4 Tower Speakers/Light Bar w/ additional 2-Channel Amp)	O	O	O	O	O	O	O
Add Package D (Subwoofer with 5-Channel Amp Upgrade)	O	O	O	O	O	O	O
*Add Package E (2 Tower Speakers and Sub w/ 5 and 2-Channel Amps)	O	O	O	O	O	O	O
*Add Package F (4 Tower Spks/Light Bar & Sub w/ 5 and 2-Channel Amps)	O	O	O	O	O	O	O
Audio LCD Display Remote - On Dash	S	S	S	S	S	S	S
Audio LCD Display Remote - In Cockpit Speaker Box	NA	NA	NA	NA	NA	NA	S
Audio LCD Display Remote - Transom Location	O	O	O	O	O	O	O
Sirius Satellite Radio System w/ 6 Month Subscription	O	O	O	O	O	O	O
TRAILER OPTIONS							
Single Torsion Axle Trailer w/ Alloy Wheels and Disc Brakes	S	NA	NA	NA	NA	NA	NA
Tandem Torsion Axle Trailer w/ Alloy Wheels and Disc Brakes on both axles	O	S	S	S	S	S	S
Color-Matched Bolt-On Fenders	S	S	S	S	S	S	S
Spare Tire Mount	S	S	S	S	S	S	S
Fulton F2 Trailer Jack	S	S	S	S	S	S	S
Removable Guide Poles	S	S	S	S	S	S	S
Trailer Prop Guard	S	S	S	S	S	S	S
Galvanized Frame	O	O	O	O	O	O	O

* Dual Battery Option Recommended

Skier's Choice reserves the right to change model line specifications, equipment, color schemes and pricing at any time without notice or incurring obligations. It is the Dealer's responsibility to adhere to all State and Local regulations and laws governing minimum requirements needed on each boat, such as trailer brakes, kill switches, and other safety equipment.

Safety

Skier's Choice encourages all boating participants to learn and follow safe boating practices. There are risks associated with boating and water sports activities. Be mindful of the risks, familiarize yourself with the environment, know your limits, and conduct yourself accordingly. Read your Owner's Manual and comply with all warnings. For additional safety information, please visit the US Coast Guard Auxiliary at www.cgauked.org or the Water Sports Industry Association at www.wsia.net.

Thank You

Building a catalog is like building a strong relationship. The initial idea or meeting is easy, it's the team work and follow-through that make the difference. We had some amazing team work on the 2012 Supra Boats catalog. We would like to sincerely thank difference-makers like Tom King Photography, Devon Uderitz, Elizabeth Carollo, the Tinker Family, Roger Lowery, Janie Denning and Transworld Wakeboarding Magazine.

